

A&B

ARCHITECTURE

SOPANAM - A Fusion of Traditional Sensibilities with Modern Technology

Vasant - The Blooming House

A House for a beautiful family with an Artistic sculptural form

INTERIOR

Showcasing an Aspirational Lifestyle through Innovations





DOES HEAT BELOW YOUR ROOF CAUSE STRESS TO YOUR EMPLOYEES ?

INSTALL HINDALCO EVERLAST ALUMINIUM ROOFING SHEETS

Hindalco Everlast Roofing Sheets make complete business sense:

- Moderate temperature below the roof
- Do not rust, needing no maintenance
- Good resale value vis-à-vis other roofing materials
- A quality product from Hindalco - the world leader in aluminium rolled products



NETWORK HEI03119

For more information, please call: 1800-103-9494. E-mail: hindalco.everlast@adityabirla.com | www.hindalcoeverlast.com

Godrej Value Co-Creators Club Introduces VC Live



A platform that will host leading architects, design professionals and academicians to discuss trends and techniques that shape the future of the industry

The Godrej Value Co Creators Club (GVCC), a unique engagement platform introduced by Godrej Locks & Architectural Fittings and Systems, a business unit of Godrej & Boyce conglomerate today announced the launch of a new series called the 'VC Live' - monthly series of interactive and educative conversations with experts in the field of architecture and design.

The initiative will be specially curated by Sneha Ullal and Mrinalini Ghadiok, both reputed for their editorial and curatorial prowess in the industry. The series will feature various formats of digitally driven interactions like discussions with Godrej Locks members, masterclasses by designers and educative engagements with industry experts among others . This was created with the intention that gives architecture and interior design community in India an idea platform that is truly customised for their needs.

The first session held on 11th February, 2022 at 5 p.m. titled, "Unlocking Safety through Design". The engagement will see potential participation from GVCC members, as well as Mr. Shyam Motwani, EVP & Business Head, Godrej Locks & Architectural Fittings and Systems in conversation with experts Madhav Raman, architect, urbanist and co-founder, Anagram Architects and Nishita Kamdar, Founder and

Principal Architect of Studio Nishita Kamdar.

Each episode will be followed by a monthly journal to help the industry keep abreast of the trends and learn from leading architects.

Mr. Shyam Motwani, EVP & Business Head at Godrej Locks & Architectural Fittings and Systems, comments on the announcement, "Our brand has evolved colossally over the years and one of our clear objectives was to build the AID community in India and work with them as partners and advocates of home safety."

Ms. Sneha Ullal and Ms. Mrinalini Ghadiok, Curators, Godrej Value Co-Creators Live commented "We are very excited to be curating the first initiative for the Godrej Value Co-Creators Club. We will be going live with a series of conversations with architecture and design stalwarts as well as young talent, discussing subjects that champion and challenge all of us, as creators and consumers of creativity." ■

Hafele's Cuatro 1000 Mixer Grinder



4

For generations, the Indian kitchen has never been complete without the quintessential Mixer-Grinder. For many, the delectable pastes, curries and chutneys made in the mixer-grinders are a part of the 'secret recipes' passed down for generations, forming an integral element of an individual's culture. To honour this legacy and warrant further innovation, Häfele introduces new premium mixer - grinder models to its Countertop Range of Appliances - Cuatro 1000, Eleganz 800 and Thea 1200.

When chemicals in food are exposed to the oxygen in the air, their composition changes and they begin to deteriorate. A traditional blender, while blending accelerates the oxidation process of food particles which results in the food undergoing a change in taste, colour, texture and in losing most of its nutrients which in turn impacts the life of the blended food. Häfele's Cuatro 1000 Mixer-Grinder brings to the table and your homes the maximum goodness of fruits and vegetables in the form of VacuoTechnology.

With just a tap of the button, it removes the air and oxygen responsible for oxidation of food from the jar and stops the subsequent depletion of the micronutrients to enhance

the shelf life and preserve the nutrient content of the food. Once the air is pulled out of the blending jar, the food is blended uniformly at high speed thus providing it a perfectly smooth texture without the formation of air bubbles.

The Victus Blade, from Häfele's Ninja Series, present in the Cuatro 1000 is an amalgamation of traditional sharp edged chutney grinding blade and dry grinding blade which provides you with the perfect concoction of juice, chutney and spice mixture that stay fresh for hours.

Log onto <https://www.hafeleindia.co.in/Store-locator/index.html> to find the nearest Häfele showroom or design centre. ■

For further details, please contact:

Website: <https://www.hafeleindia.com/en/>

Customer Care Toll Free: 1800 266 6667

Customer Care WhatsApp: +91 97691 11122

Customer Care Email ID: customercare@hafeleindia.com

Shaw Contract releases new visualisation tool, View in My Room

ShawContract®

Introducing the "View In My Room" Visualisation Tool



As simple as...

- 1 Upload a photo of your room or take a live photo
- 2 Select your flooring of choice- Carpet Tile, Broadloom, LVT & Rugs
- 3 Instantly visualise our products in your room & share!

Shaw Contract has unveiled a new visualisation tool that allows designers to immediately see how a product will look in their space.

The View in My Room feature is available to use for free on the Shaw Contract website's mobile and desktop sites.

To begin, designers are asked to upload an existing image of their room or take a live photo.

Once it's uploaded, select from any product in Shaw Contract's range of Carpet Tile, Broadloom, LVT and Running Line Rug products.

You can also use the Edit Surface function to add or remove flooring from areas in your photo or the Installations function to customise your preferred installation method.

Finally, click and drag the flooring to reposition the product within your room, using the slider at the top of the screen to adjust further.

Then when you're happy with how it looks, the View in My Room tool allows you to share your visualisation easily by either downloading an image or copying a link to send to others.

And with a click of the Product Info button, you'll be taken directly to the corresponding Shaw Contract's product detail page. Ready to View in YOUR Room? Learn more on the Shaw Contract website . ■

For further details, please contact:

www.shawcontract.com

Shaw Contract

#19/3, Doddamane, 2nd Floor, Vittal Mallya Road, Bangalore, Karnataka 560001

INDIAN ARCHITECT AND BUILDER

CHAIRMAN

Maulik Jasubhai Shah

PUBLISHER & CEO

Hemant K. Shetty

SUB-EDITOR

Sudhanshu Nagar

CREATIVES

Arun Parab

GENERAL MANAGER SALES

Prashant Koshti

Amit Bhalerao

BRAND MANAGER

Sudhanshu Nagar

SALES

Priyaranjan Singh

Godfrey Lobo

Chandras M Amin

Yonack Pradeep

Indian Architect & Builder: (ISSN 0971-5509), RNI No 46976/87, is a monthly publication. Reproduction in any manner, in whole or part, in English or any other language is strictly prohibited. We welcome articles, but do not accept responsibility for contributions lost in the mail.

JASUBHAI MEDIA PVT. LTD.

Registered Office: 26, Maker Chambers VI, 2nd Floor, Nariman Point, Mumbai 400 021, INDIA. Tel.: 022-4037 3737
Fax: 022-2287 0502, E-mail: sales@jasubhai.com

PUBLISHED BY:



3 Industry News

ARCHITECTURE

10 Sustainable Office Spaces

Breaking the boundaries between the employees, favoring shared workspaces rather than segregated offices for better communication, culture and trust.

18 Landmark to a Divine Destination

Hotel Rama Trident, Katra was envisaged by the client as a new beginning at the holy pilgrimage spot of Katra from where the arduous journey to Mata Vaishno Devi starts.

28 Soul of Abode

Building resilience through enhancing adaptability, flexibility and sustainability as housing shifts to "new normal".

PUBLIC PLACES

36 Focal Point of Attraction along the Waterfront

New garden design aims to provide a welcoming street presence, a great public space, relation with water and sky along the promenade and an enhanced last urban park in Nani Daman area.

Cover: © Hotel Rama Trident

Beyond Designs Home Launches Charming Decorative Boxes



Beyond Designs Home has launched décor accessories and functional articles that inject an unmistakable beauty and timelessness into your homes. A new collection of decorative boxes launched by Beyond Designs Home brings a charming look to your tabletops.

Whether you want to add a chic vintage touch to your tabletop décor or you want to store some knick-knacks in a stylish manner, these beautiful boxes come in handy. They can be used on the entryway consoles, buffet tables or dressing tables to introduce colour.

The Swabian wings round box in rich red and Reredos wings round box in mustard are bright addition to any surface. The Raphel wings round box in grey and Reredos wings round box in silver grey are chic. All of them feature a hint of antique gold accent that gives them a vintage allure.

About the Brand

For the past 20 years, Beyond Designs has captured the residential designs narrative of creating highly individual & exquisitely finished

projects, concentrating on residences, many of them for well-known personalities. Specializing in luxury interior design & decoration in New Delhi and across the world, renowned designers & entrepreneurs Sachin & Neha's iconic, neutral style has featured in high acclaimed journals. Their design philosophy is to keep it stylish yet effortless. Get inspired by the old-world charm to create a fusion, contemporary & timeless design. ■

For further details, please contact:

please visit : www.beyonddesigns.in/

<https://www.instagram.com/beyonddesignshome/>

Action TESA introduces 'BOILO' Boiling Water Proof (BWP) with FR Grade HDF Boards



8

Action Tesa, one of India's largest manufacturers of Engineered Panel Products like MDF/ HDHMR & Particle Boards in India, introduces a unique product 'BOILO', a Boiling Waterproof HDF Board. Action TESA is the first Company to launch this kind of product across the globe. Action Tesa Boilo Boiling Water Proof (BWP) with FR Grade HDF Boards is an innovative product that promises to be the first ever boiling water proof and fire retardant board in India. The boards are available in different grades and thicknesses, making them suitable for any kind of project.

BOILO by Action Tesa is highly suitable for interior applications having wet conditions, high load bearing surfaces, high traffic and high temperature areas. Action Tesa BOILO has Fire Retardant features, which makes Flame Retardant three times more against passing parameter of IS 5009:2000 Fire Retardant Plywood. Besides, it is high density board,

carries above 1000+ Kg/M3 Density along with High Impact Resistance, Toughened Surface, Termite Proof, Environment Friendliness and Fungus Resistance.

Action TESA's Boilo- BWP HDF the termite proof HDF Board has been developed under high pressure and temperature. This process makes the board a high-density board, with toughened surface, high load bearing and impact resistance with added advantage of Fire Retardant and High Dimensional Stability. The qualities of this board have been achieved using the special German technology of MAT formation, for the first time in India.

Mr. Ajay Aggarwal, Managing Director, Action TESA says, "Action TESA's BOILO is the safest and toughest available board in the market. The water proof property of BOILO annuls the possibilities of fungus and termite infestation. The inherent properties of BOILO makes it a great choice for both residential and commercial projects. Because of these unique features BOILO is an exclusive product in the segment."

BOILO by Action TESA is suitable for application in common areas such as Restroom Toilet Cubicle, Thermal Insulation, Load Bearing Area such as Decking, Warehouse Shelves, Staircases, Container Floor, Truck Floor, Bus Body Floor, Bathroom Partition, Fire Retardant Application, Flooring, Moist Area Furniture, Fly Ash Brick Making, Stage Flooring, etc. ■

For further details, please contact:
please visit www.actiontesa.com



ARCHITECTS JOIN CMC'S BIKE RALLY TO SUPPORT GIRLS' EDUCATION, RAISE FUNDING FOR 160 GIRL STUDENTS

A fleet of Indian Motorcycle Riders Join in to Lend Support to the Cause



them in the basics of computer learning to skill them for possible employment opportunities.

"Education is close to our hearts at CMC and we wish to help as many children as we can to receive it. Our initiative aims to empower girls with a skill set which will help them in bettering their employment opportunities when they step into the job market. We

In a first of a kind motorcycle rally organised by Classic Marble Company (CMC), architects from across Maharashtra rode from Mumbai to Silvassa in a bid to raise funds for the education of girl children. The rally flagged off from CMC's head-office located in Bhandup on 12th Feb at 7:00AM and terminated at the company's exquisite 9th Avenue Gallery in Silvassa at 11:30AM. The activity brought together like-minded individuals who love to take the open roads on two-wheels. For every architect participating in the rally, CMC donated an undisclosed amount for funding the education of 160 girls from the Balwatika Society located in Dadra and Nagar Haveli. Joining the architects on the ride, a fleet of Indian Motorcycle Riders too cruised along as a show of support towards the cause.

The funds raised will be utilised towards building a brand new, fully equipped computer lab for the girls. A dedicated faculty will train

would love to absorb any potential candidates from amongst these girls who may display interest in the profession. For the architects and riders who joined us in this initiative, we thank them wholeheartedly for it," says Mr Amit Shah, Managing Director, CMC.

As part of the event, architects were offered a tour of CMC's exquisite 9th Avenue Gallery and introduced them to some of the awe inspiring, limited edition stones at the venue. ■

For further details, please contact:

Classic Marble Company Pvt. Ltd.

15, Bhandup Village Road, Subhash Nagar, Bhandup (W), Mumbai 400078

contact: 91 22 4140 4140

Website: <https://www.classicmarble.com/>

Sustainable Office Spaces

Architect Akshay Selukar, Bhopal
Text and Images- Ar. Akshay Selukar



Breaking stereotype with an open office layout.

The office has an open layout which emphasizes proper work environment breaking the boundaries between the employees, favoring shared workspaces rather than segregated offices for better communication, culture and trust.

Designing being a field where exchange of knowledge is a major factor, an attempt has been made to highlight the significance of chaupal as a public place for civil society in India. The chaupal not only helps to add

an informal sitting area in a formalized professional space but also serves the purpose of adding an aesthetic feel to the entire area with the help of a natural tree spreading its beautiful shadow on the exposed concrete finished ceiling.

For blurring the boundaries between inside and outside, huge glass partitions have been used to allow ample amount of natural light to enter making the space not only lively but sustainable too. When talking of



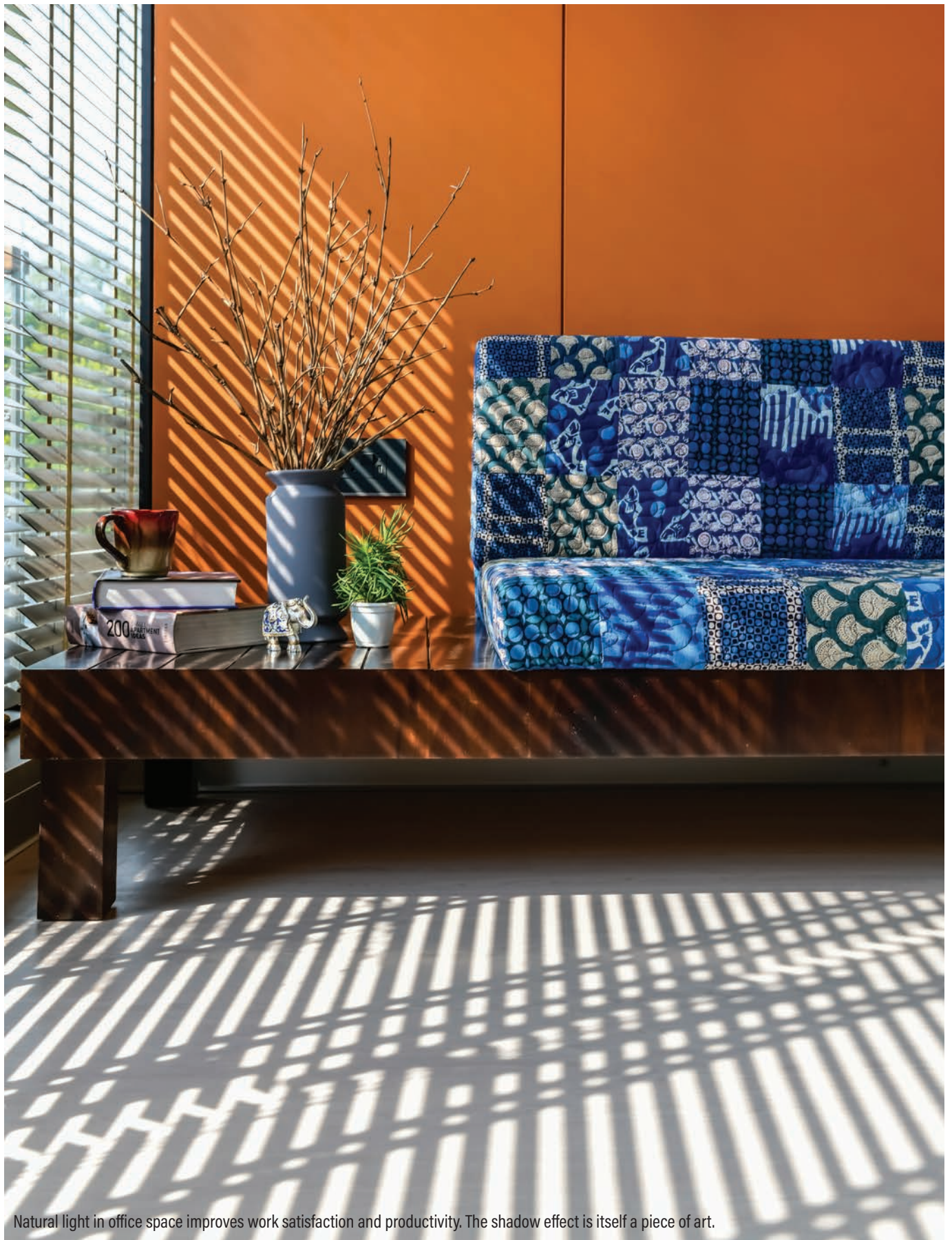


Chaupal as socializing space.

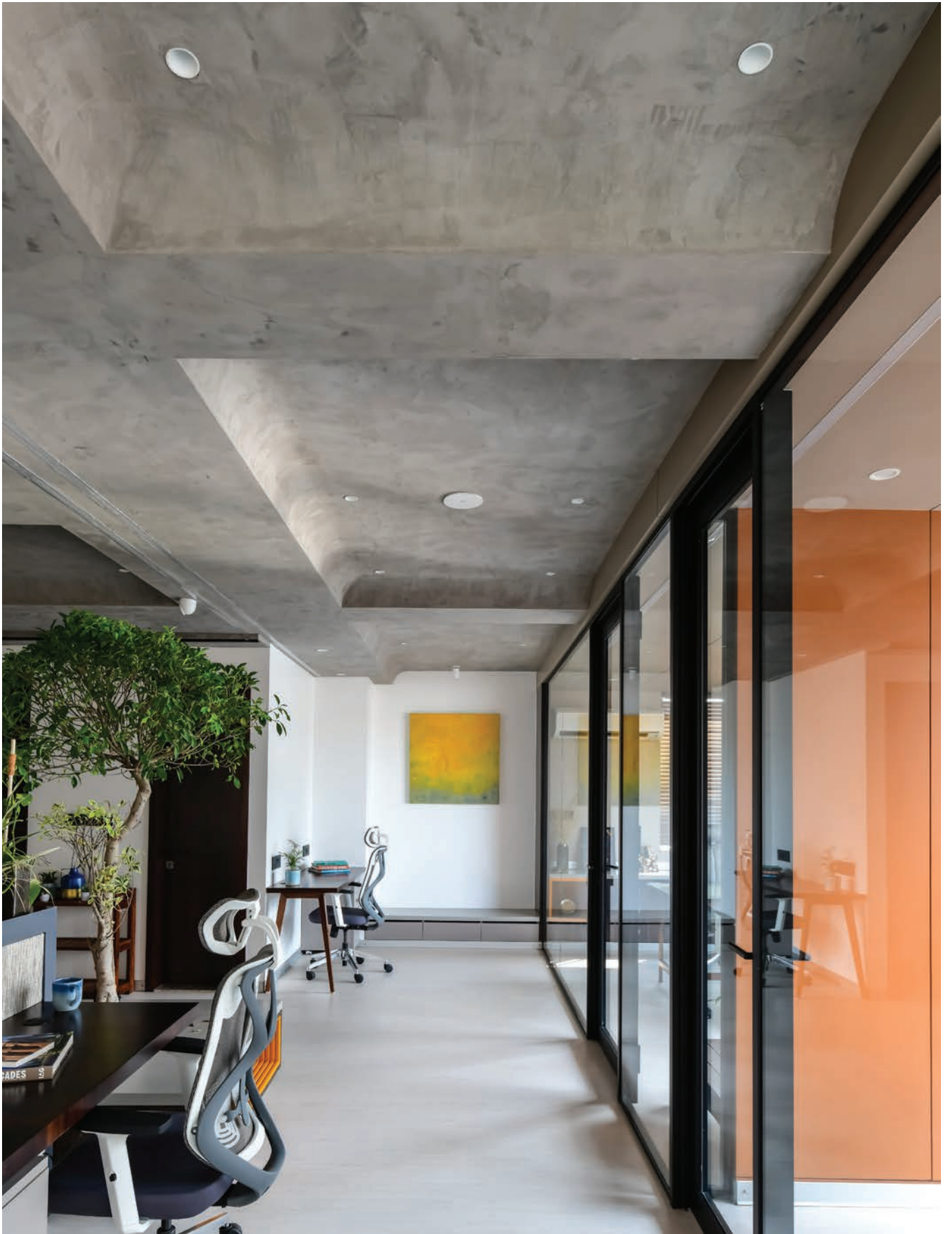


Thumb print pattern engraved door.





Natural light in office space improves work satisfaction and productivity. The shadow effect is itself a piece of art.







sustainability, a lot of green elements and plants have been added to invite nature inside the office which helps in refreshing the creative minds to come up with better ideas and to provide healthy, natural, well ventilated environment. The employees when constantly gazing into screens could get a break just by looking to the greenery and could give rest to their eyes too.

Washrooms being the most ignored elements in offices have been treated very differently when it comes to an office where ideas could strike even while sitting in the loo and hence being named the thinking room. With yellow tiles and grey walls giving contrast as a statement and adding colorful

art pieces made by the team itself to add vibrancy to such a confined area.

“God lies in the details” could be clearly justified in this office with each wall being decorated with paintings made by the architect himself using bright colors on plane white walls, placement of lights, each drawer knob and switches also being specifically chosen to give the space a personal touch. ■

FACT FILE

| | |
|---------------------|----------------------------|
| Principal Architect | : Ar. Akshay Selukar |
| Architect's Firm | : Architect Akshay Selukar |
| Project location | : Bhopal, India |
| Total Built-up Area | : 1200 Sq. Ft. |
| Year of Completion | : 2021 |

Landmark to a Divine Destination

Hotel Rama Trident, Katra was envisaged by the client as a new beginning at the holy pilgrimage spot of Katra from where the arduous journey to Mata Vaishno Devi starts.

Hotel Rama Trident, Katra, Jammu & Kashmir, India

Text & Images- Studio Meraki

Photo Credit - Priyanka Chaudhry



Front Elevation

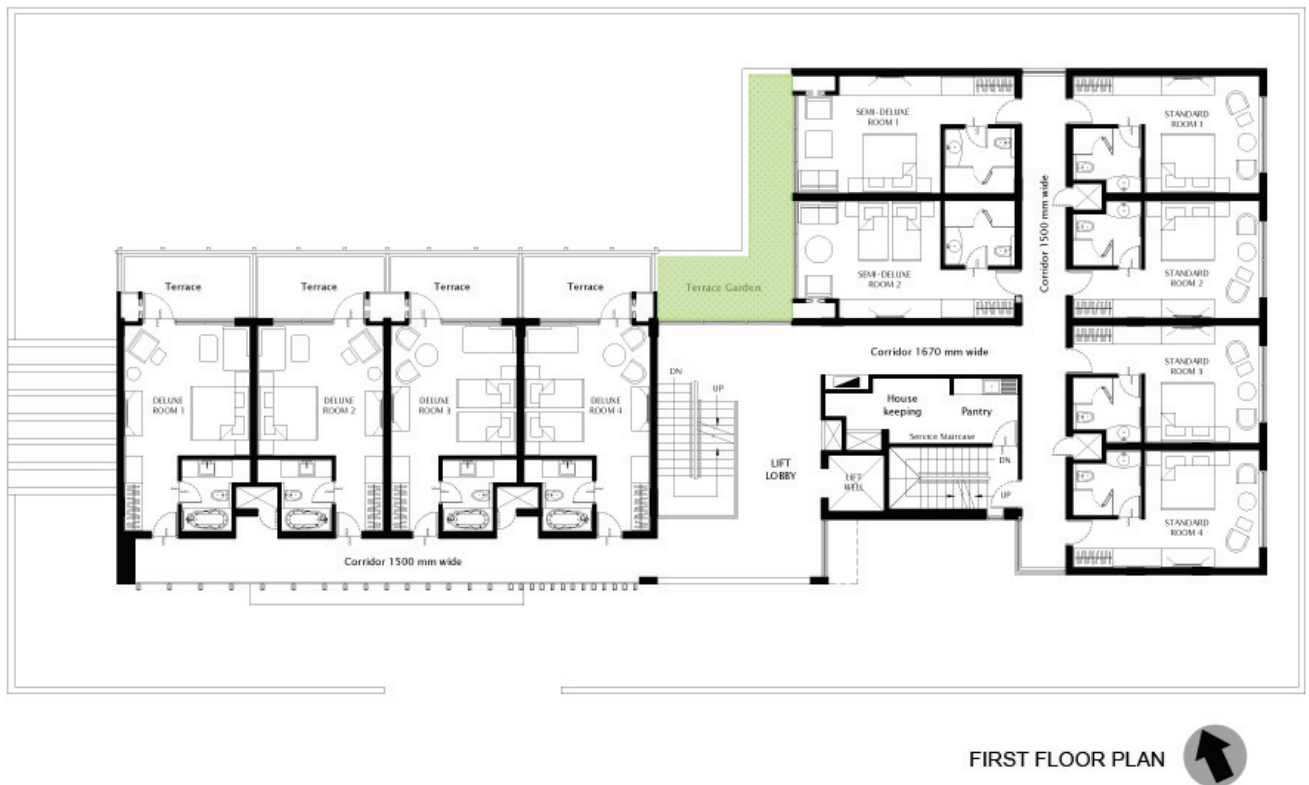
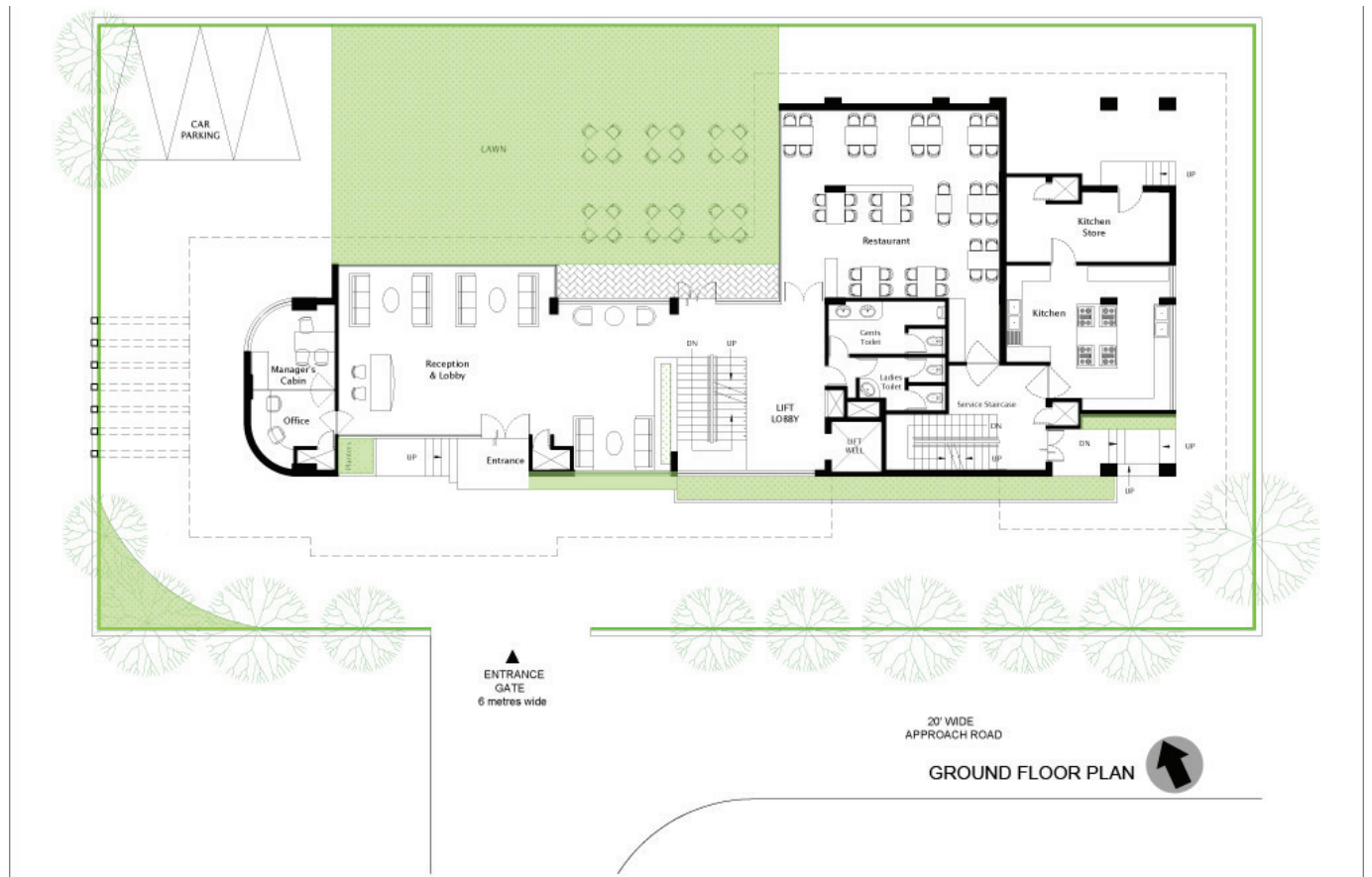
The area's business is primarily thriving on the tourism generated from these devotees. The client wanted a landmark to be developed against the backdrop of a non-aesthetic and extremely chaotic urban fabric, wherein each building was shouting about itself pitching against the other for

garnering attention with loud features and shining tints of colored glass.

Client intention was to build a hotel offering lavish room sizes at a similar or better quality while at a price cheaper than the five star hotels of that area and that was the benchmark set for the architect. They

Cantilevered Front Façade







Rear Lawn View



Play of light and shadow in corridor

also aimed for better quality of spaces that fostered a sense of well being and offering an immediate respite to the extremely fatigued travellers.

Another important intention was to have a strikingly different facade from the regular boxed arrangement of windows and ornamental balconies looking onto the street to a more novel and fresh approach that would be more thought through. Something more calm and pleasant than what existed and that resonated well within the street.

Located on the Railway road, hence it is a very favourable location for the people entering the town from the only Railway station of the area. Also, the site is slightly

set back from the main road, but has a whole gamut of excellent views of the entire mountain range that is sparkling lit at night at the rear northeastern side.

Massing & Orientation :

- The site was a bonus as it had an uninterrupted view of the scenic mountains and ringed a possibility of orienting the rooms towards them at the rear, hence making it an introverted building rather than one opening onto the main street. Also, Vaastu and climatic conditions favoured this particular alignment as the main street was southwest facing indicative of the harsh sun during summers as well as obnoxious views in a striking contract to



Staircase



Play of light and shadow in corridor

the skyline at the rear. Hence, the initial idea started with making the building porous at the rear side and closed at the front

- The second priority was to introduce a breathing green lawn into the space acting as a foreground before the mountain views, for which the rooms above had to be cantilevered (in order to free up space at the ground level) having flat seamless soffits that required a lot of co-ordination work between the structure and the services.
- Also, Vaastu was important and in this arrangement of massing, the northeast sacred corner was left empty.

Elevation :

- Facade dealt with only vertical and horizontal louvers being the main elements interacting with the sunlight and adding to the quality of the space as well as some protection from the direct glare as well as screening the views of the street.

Energy Efficiency:

The project predominantly makes use of passive design strategies in its conception stage w.r.t. massing and orientation as well as facade treatment in order to achieve an energy efficient building. The hotel consumes nearly 25-30% less energy in



Vertical Louvres : Front Façade

comparison to the other hotels in the area as calculated by the clients.

- Introducing daylight while balancing the thermal gain was a priority and hence all rooms, restaurant, lobbies and corridors are well washed with daylight throughout the day with absolutely no use of artificial lighting thereby conserving energy as well as reducing the cooling load.
- Cantilevered rooms above the ground floor provide sufficient shade to protect the ground floor lobby from getting hot during summers.
- The design also incorporates terrace

gardens at each floor as the visual connect to the green becomes an integral part of the design.

- Also, the design has integrated green walls (creeper laden boundary wall adding to the greenery of the lawn as well as offering immediate psychological comfort to the visitors in the lobby as well as restaurant) as a critical part of the scheme and hence continued the same language of green in the interiors as well with elaborate planters laid out at every floor.
- No heat gain in the rooms due to their northeast orientation providing thermal comfort to the travellers and thereby



26

Hotel Lobby overlooking the lawn



Semi Deluxe Room

JANUARY - FEBRUARY 2023



Terrace Garden

reducing the consumption of air - conditioning is a major plus point.

- Rare openings on the south west that is mostly blocked with louvres also create an interesting interplay of light and shadow.
- Extremely well lit and porous lobby allowing the garden as well as mountain views to anyone entering the hotel.

Impact on the local community :

Katra, being a small religious town in northern India is not much aware of the greener principles of life and in general a sustainable way of living. This hotel, being a landmark in the area as one of its kind has impacted the locals as well as the

general public in their overall approach and mindset towards energy saving and the importance of building in an organized and sustainable fashion that has replaced the previous haphazard and mindless planning in the newer constructions. The place has innumerable hotels and now everyone is trying to emulate the project in their own way and trying to break standards as the benchmark is already set for them. ■

FACT FILE

| | |
|--------------------------------|----------------------|
| Client | : Mr. Rajkumar Padha |
| Architecture & Interior Design | : Studio Meraki |
| Design Team | : Shweta Kaw |
| Photography | : Suryan/Dang |
| Site Area | : 1,000 sqm. |
| Total Built up Area | : 30,000 sqft. |
| Number of rooms | : 40 |

Soul of Abode

Building resilience through enhancing adaptability, flexibility and sustainability as housing shifts to “new normal”

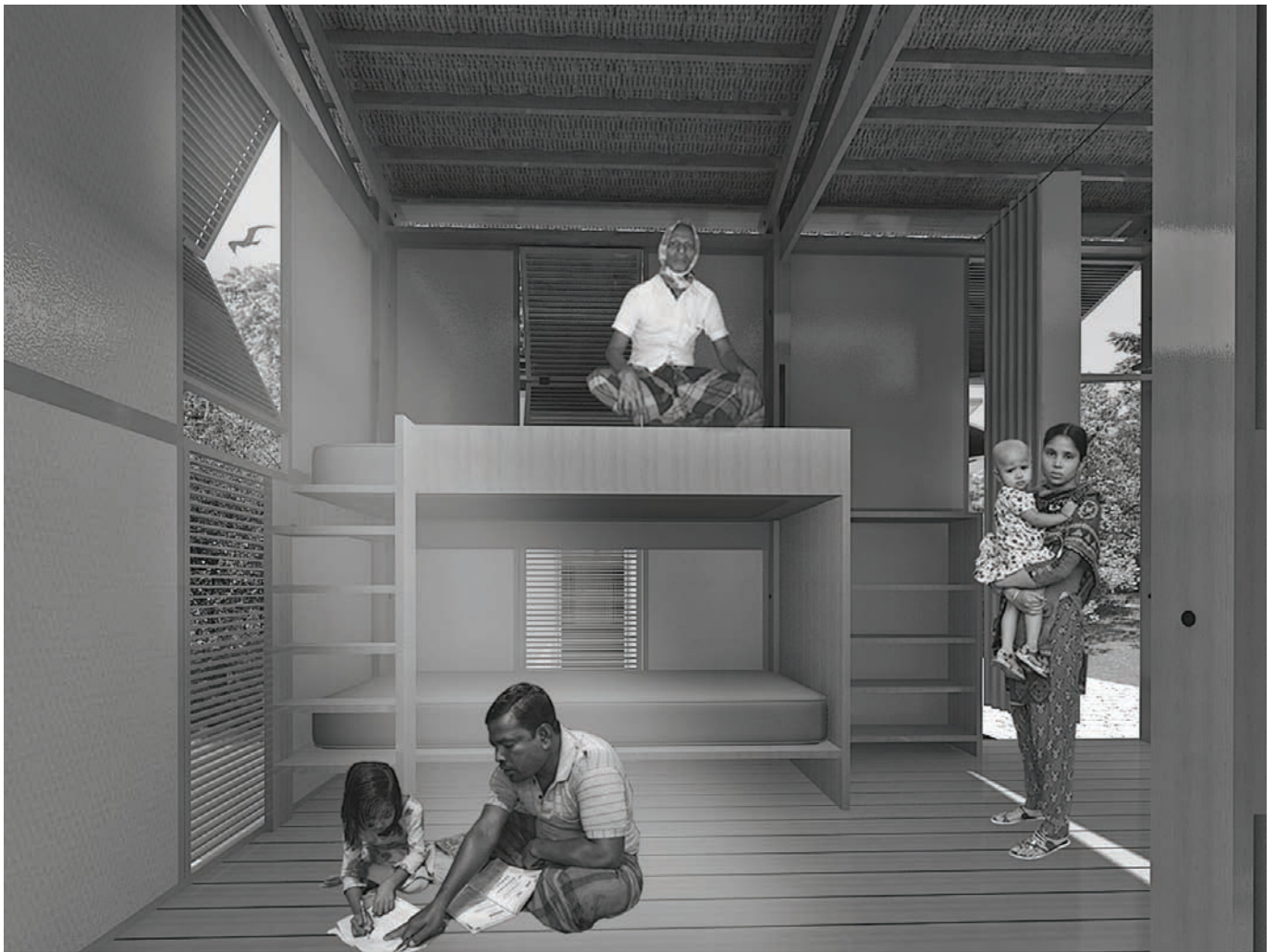
Text & Images - Shoheli Akter , Hasib Sarowar



A modular prototype for urban poor in post-pandemic (which offers 240 sq ft dwelling units with multifunctional spaces for their dweller)

The 2020 global coronavirus pandemic has forced a fundamental change in all aspects of life. The informal settlements in Dhaka are working hard to adapt to these fundamental changes, but the challenges

are becoming more difficult as the pandemic has taken us to a new normal. Also, it made the informal housing of Dhaka think as to whether the livelihoods, housing conditions, environmental services,



Living space where operable windows are used to provide adequate indoor lighting and give them a healthy environment for living.

economic conditions, water and sanitation infrastructure of these groups of people what will be resilient to post-pandemic 'New normal'?

This research develops a fundamental approach of rethinking habitat to be resilient at post-pandemic 'New normal' for urban poor in Dhaka, which initiates an investigation into their vulnerabilities and adaptation practices to pandemics and discovers what challenges be required for planning strategies to make habitat resilient at post-pandemic 'New normal'.

Adaptability, flexibility and sustainability can be considered as the key to achieving building resilience in the post-pandemic 'new normal'. Adaptability can create attractive housing, accommodate cultural diversity and self-realisation. Architects, planners and researchers have needed to rethink their daily use interaction spaces at community and household level to enhance the adaptation skills of these groups of people. In coronavirus outbreak are forcing these neighbors to indoor due to the spreading of virus infection but these



Step 1



Step 2



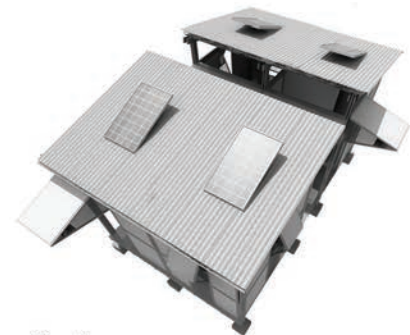
Step 3



Step 4



Step 5



Step 6

Construction Steps of an Dwelling Unit

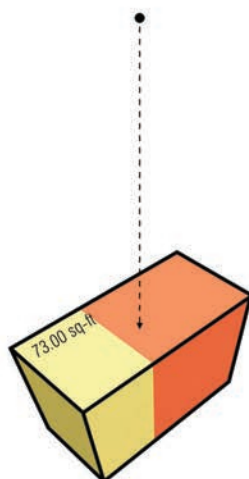
(It is local wood construction technique which is also recycling material. Moreover, possible for them to build the structure in a very short time and at low cost. Which is time and cost effective in post Covid-19)

Cost = 110.83 USD

Exploring construction technique for a modular structure (90% of which build from recycled materials).

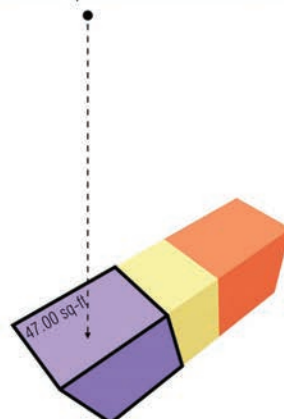
Concept Formulation

Minimum Requirement



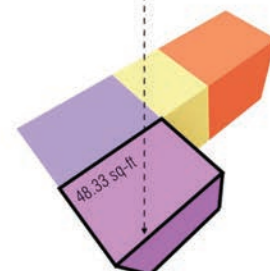
Service Block (Toilet , Water Reservoir)

The Service block has been added to their household life so that the virus doesn't spread as a result of sharing.



Self Quarantine Space

They are financially very poor, helpless and have no other financial support to survive. As a result they have to go out for income and since they have a lot of people together they have a chance to be infected, which requires a separate space to keep the earning person away from other people and to use it as an isolation space if someone gets infected.

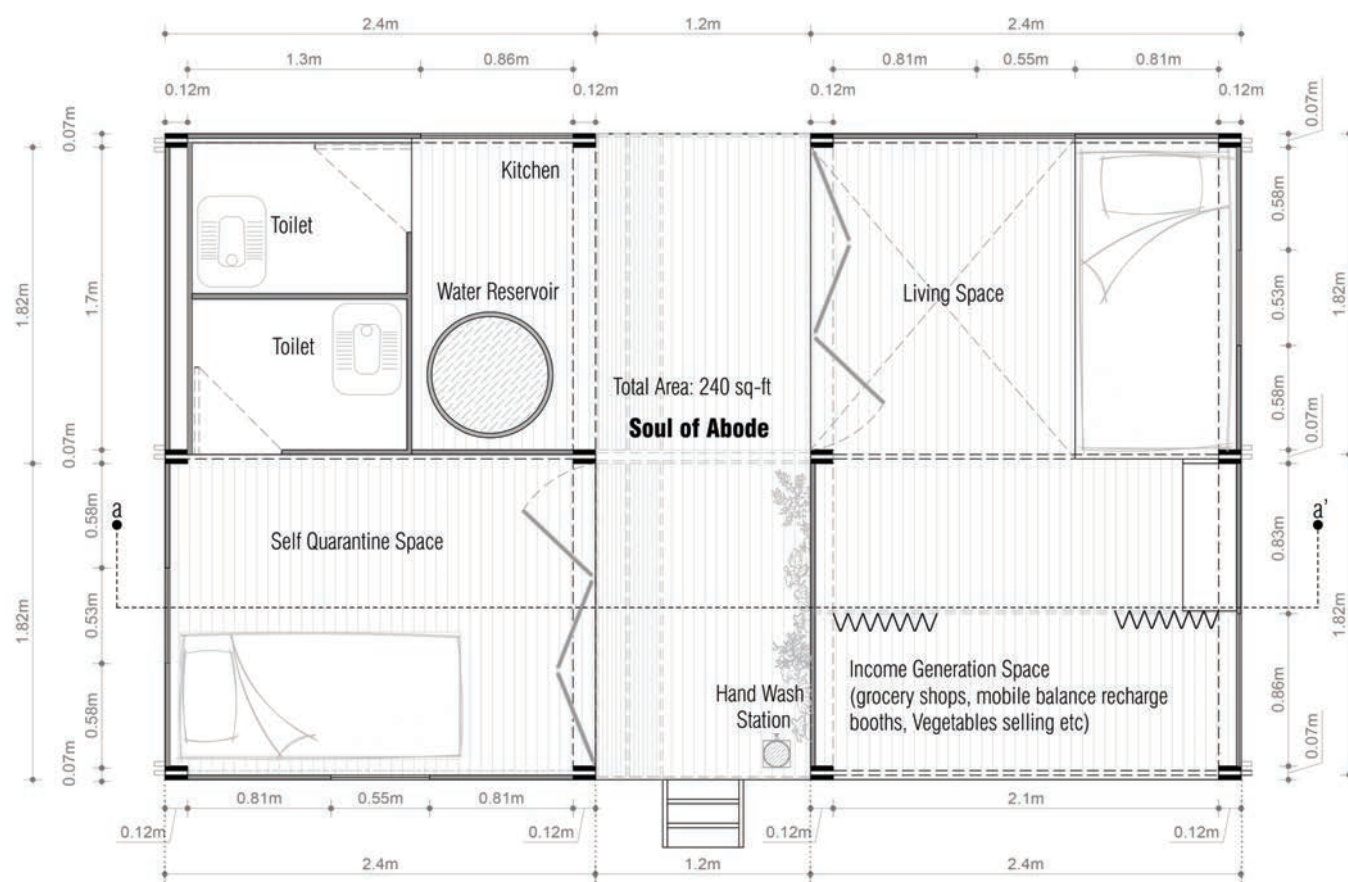


Income

The Income
Post v
protect

"Soul of Abode" which introduce adaptability, flexibility and sustainability for rethinking habitat resilient at post-pandemic 'New normal'

JANUARY - FEBRUARY 2023



Flexibility or flex space design in floor plan which will be able to easily adapt to the changing needs of the dwellers at "new normal"

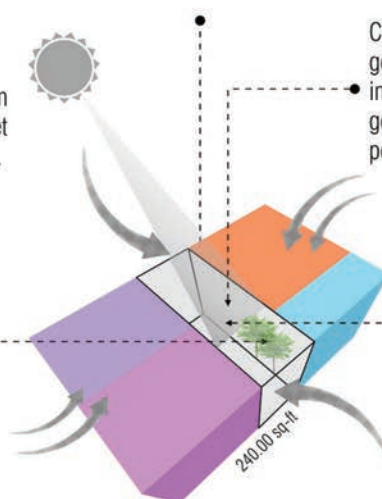
Income Generation Space

Income Generation Space will provide earnings and support at Covid 19



SOUL OF ABODE

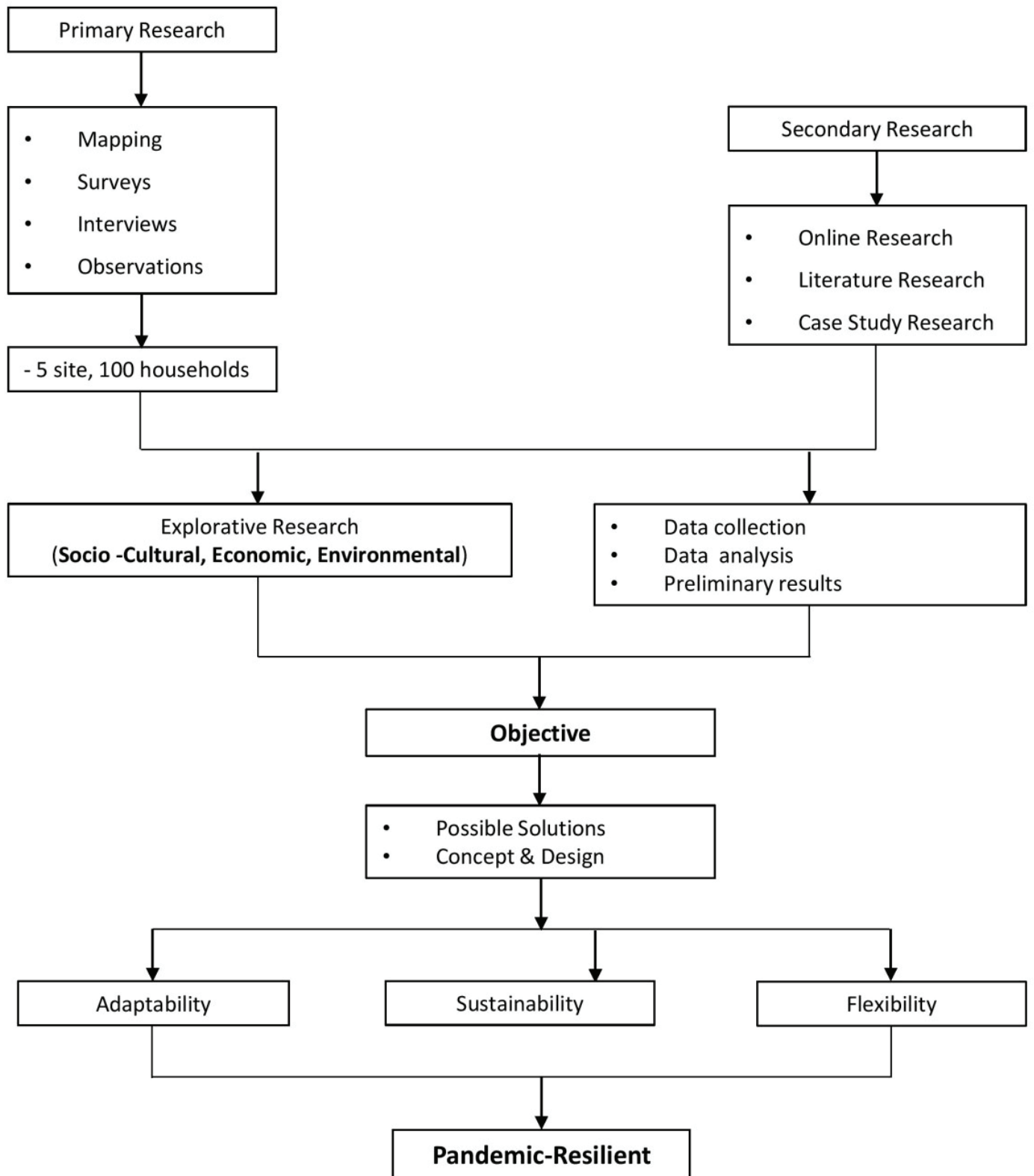
Gardening will help keep them away from emotional frustration. It will help to meet the requirements of vitamins and minerals.



Cross ventilation helps to disinfect any space. In general, direct sunlight helps boost up vitamin D and immun system, as well as natural light helps maintain good mental health, which plays an important role in post-covid 19.

Household Activity

- Kitchen
- Child Play
- Cloth Drying
- Gossiping
- And So On....

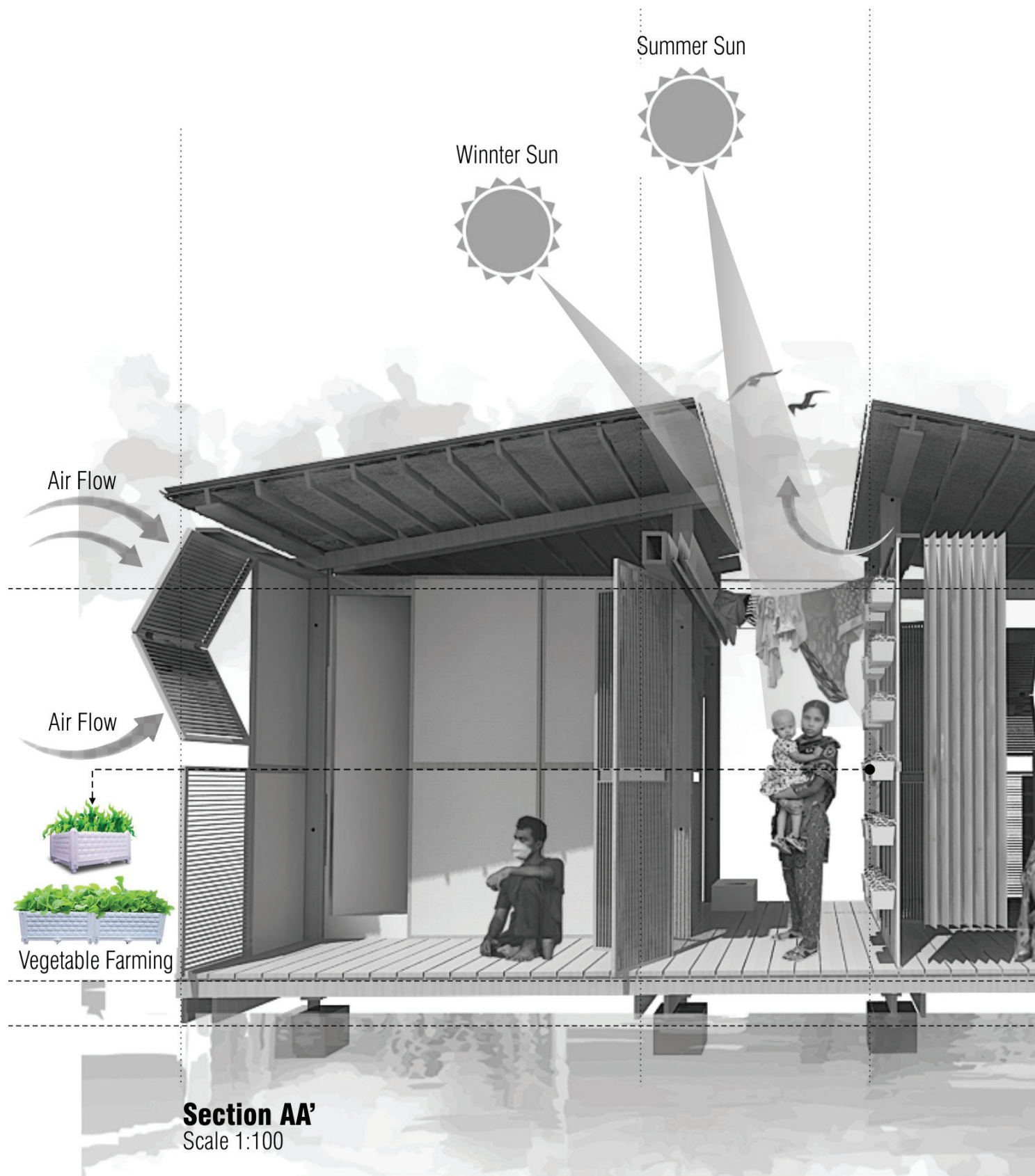


neighbors spend maximum of their daily time in semi-outdoor (Soul of Abode) space because this semi-outdoor space is life and death for them and all their daily activities (income generation, sharing their joys and sorrows with neighbors, community meeting, children's play, cloth drying, shared toilet, kitchen and more) are surrounded by this place. This interaction space has been threatened in post-pandemic 'new normal' due to their high population density, unawareness of the spread of the virus and challenge of maintaining the social distance. Since this interaction space has been compared to life as well as life cannot be lived without life, in post-pandemic should take an attempt to re-think the life (semi-outdoor space) and replace it with the body (habitat). In addition, redesigning this space will not only increasing the pandemic adaptability of their habitat but also improve their livelihoods, boost the immunity, decrease the economic vulnerability, provide sufficient light in the indoor, ensure ventilation which will be made habitat resilient.

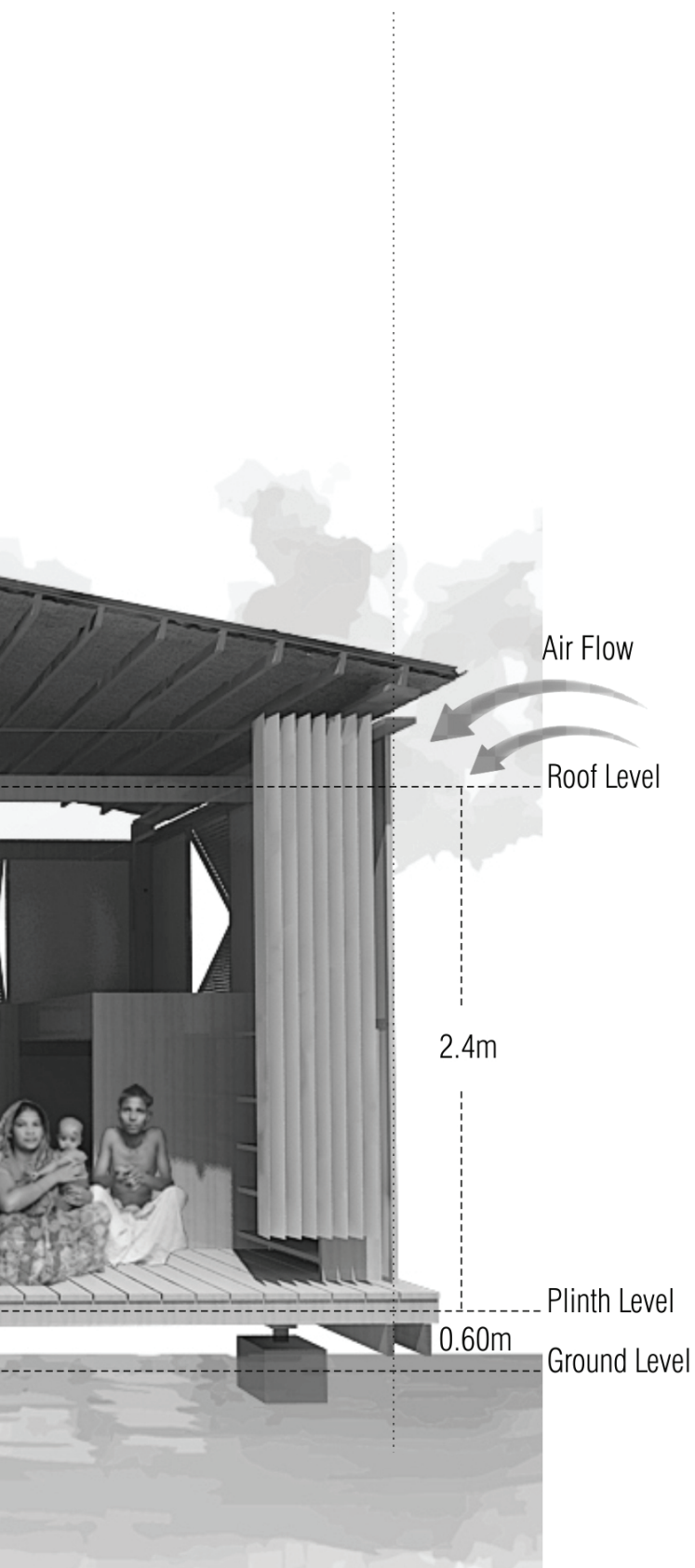
Flexibility in dwellings unit have easily adapt to the changing needs of inhabitants and proposes multiuse spaces in dwellings plan that are creating multifunctional or transitional spaces (commonly called "flex spaces") that can be transformed from a one space to another space, for example, income generation space will a living space, self-quarantine space will a rentable space,

easily-moved composite toilet, furniture, tucked away storage, partition walls, and more. Slum dwellers are able to use the space as needed and they are not stuck with outdated floor plans.

Sustainable and cost-effective solution are required to reducing the cost of building materials which will reducing the building time in post-pandemic and considering involvement of the community in the building process. Modular structures will provide the user with flexibility to make the unit adaptable (moveable, collapsible, adjustable user control, operable components, versatile-frame construction, allows change in future, exchangeable-multifunctional space, simplicity, legibility, scalable-local material, known techniques, dividable/joinable rooms) with any contextual change of Dhaka (airflow, daylight-windows and doors are re-locatable, adjustable roof allows ventilation). Moreover, the dwellings units can be dismantled when slum dwellers are evicted and reassembled in a new location wherever the government allows them to live. Local industries and job opportunities may develop to produce modular components from wood and biodegradable recycled materials enabling users to build, maintain and repair their own units. Energy conservation can be achieved through every stage of material life cycle. Thus, sustainable construction knowledge will disseminate among the users as well as



Sectional Perspectives on Modular Prototype that indicates the Improving of Indoor Ventilation, boosting their immunity system, and increasing Livelihoods.



sense of belonging will develop which help them to cope with the post-pandemic 'new normal' changes together.

The main goal of this research is to develop an architectural and planning solution that will be sustainable for the dwellers of this community in the post-pandemic 'new normal', where the proposed solutions will adaptable and affordable. Moreover, this research will also develop the informal housing strategy efficiently and aesthetically to upgrade slum dwellers livelihoods. Also, despite the many limitations, this study will serve as a beacon of hope for the upgrading of informal housing in Dhaka city to post-pandemic 'new normal' ■

FACT FILE

| | |
|--------------------------------|---|
| Client | : |
| Architecture & Interior Design | : Shoheli Akter , Hasib Sarowar |
| Design Team | : |
| Photography | : |
| Site Area | : |
| Total Built up Area | : |
| Mentor | : Nusrat Jahan Mim, Doctor of Design, Harvard University School of Design. |

Focal Point of Attraction along the Waterfront

Jetty Garden, Daman, India

Text: KTA + ARUR

Photo Credits: Karan Gajjar / The Space Tracing Company



The Nani Daman Jetty Garden site in Daman city is a corner plot of 4000 sq.m. near St. Jerome's Fort adjacent to an existing jetty flanked by a road and St Jerome's to its east and a private property to the west. There are some 20 fully grown

trees dotted throughout the site. The site had witnessed badly planned spaces, incremental and unrelated landscape elements and sculptures that over a period of time made the park unutilized and derelict.







The opportunities the site offered included an exotic setting adjacent to a Portuguese Fort, flanked by colourful fishing boats along the waterfront and vast expanse of views – a perfect opportunity to re-create public loci where the land meets the sea and sky. This distinct brief led to a design investigation to create a public place that resonate people's aspirations and establish a sense of reverence to the water, a multi-faceted space for all age groups, capturing the beautiful play of southern sun in the vast ocean and a place to celebrate Narali Poornima boat race along the waterfront.

To this response, the first priority was to establish a pavilion on the cardinal axis that would become a focal point of attraction along the waterfront and create a sense of shade and comfort along the south facing promenade. The pavilion has to be lean, non-obstructive, multi layered, modular yet rhythmic that captures the stark sunlight and creates a possibility of spatial experience.

Post establishment of the pavilion the entrance spine was created as an extension of the street to the water edge. The entrance



area is defined by entrance frame canopy, a semi-open reading pavilion and public amenities. The sides of the entrance spine are designed with kids play zone, senior citizens corner and larger landscaped areas. These spaces are integrated around existing mature trees.

Care is taken in detailing the garden areas with ramps, low height wall for better transparency and active edges along the

street, response to the fort wall with steps in form of amphitheater, tapering compound wall, selection of material that camouflage with darker shades of the fort.

Material used included galvanized MS section structure clad with Canadian wood in the pavilion, darker shade granite flooring, kota stone flooring for seating zones and EPDM soft flooring for play areas.



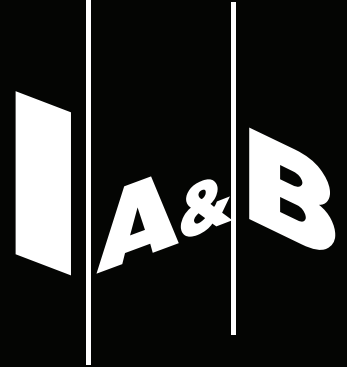
In all the new garden design aims to provide a welcoming street presence, a great public space, relation with water and sky along the promenade and an enhanced last urban park in Nani Daman area. ■

The planting design intent was to enhance the site and not have it be overly curated. We preserved around 20 trees, including Pipal, Ashoka, Rubber Tree, Neem and Gulmohar. Identifying these helped us to create a master layout, naturally segregating the garden in shaded and non-shaded areas. The planting design draws inspiration from native species with an added layer of colourful perennials to create an inviting experience year-round.

FACT FILE

| | | |
|-----------------------|---|-----------------------------|
| Project Name | : | Jetty Garden |
| Project Type | : | Public Park |
| Location | : | Daman, India |
| Completion Year | : | 2020 |
| Site Area | : | 4000 sq.m |
| Built Up Area | : | 490 sq.m |
| Architects | : | KTA + ARUR |
| Lead Architects | : | Hardik Pandit, Geeta Pandit |
| Structural Consultant | : | Rathi Consortium |
| MEPF Consultant | : | Greenbulb Design |

Connect, Engage & Collaborate with **>75,000**
architects & interior designers
with **IAB DIGITAL**



connect

art, architecture, design
professionals & students

reach

more than
75,000 architects & interior designers

explore

new avenues for reaching
the target audience

engage

brand awareness & expand
customer portfolio

customize

new avenues for
business leads

