

A&B

#### ARCHITECTURE

SOPANAM - A Fusion of Traditional Sensibilities with Modern Technology

Vasant - The Blooming House

A House for a beautiful family with an Artistic sculptural form

#### INTERIOR

Showcasing an Aspirational Lifestyle through Innovations







# DOES HEAT BELOW YOUR ROOF CAUSE STRESS TO YOUR EMPLOYEES ?

## INSTALL HINDALCO EVERLAST ALUMINIUM ROOFING SHEETS

Hindalco Everlast Roofing Sheets make complete business sense:

- Moderate temperature below the roof
- Do not rust, needing no maintenance
- Good resale value vis-à-vis other roofing materials
- A quality product from Hindalco - the world leader in aluminium rolled products



NETWORK HEI031 19

For more information, please call: 1800-103-9494. E-mail: [hindalco.everlast@adityabirla.com](mailto:hindalco.everlast@adityabirla.com) | [www.hindalcoeverlast.com](http://www.hindalcoeverlast.com)





PRESENTING THE TRAILBLAZING

# TERRA SERIES



PRUDENTLY  
PRICED



7 YEARS  
WARRANTY



WATER  
SAVING

## We Work With Water

Terra from ARK aims to provide amazing flow rates; operates with easy convenience; is engineered for long lasting, trouble free performance; rivals expensive and European faucets in styling and appearance while costing a mere fraction of their price. Buy Terra, experience Gravity and Water at play...

Regd. User

**CRYSTAL SANITARY FITTINGS PVT. LTD.**

An ISO 9001:2015 Certified Company

**Regd. Office:** 121, Industrial Area, Phase I, Chandigarh - 160002. **Corporate Office:** 72, Industrial Area, Phase I, Panchkula, Haryana - 134113. **Phone:** 0172-4378800-10, 5057535.

**Works:** Village Sansiwal, P.O. Barotiwala, Tehsil Kasauli, Distt. Solan, Himachal Pradesh - 174103.

**Customer Care:** 1800 137 0072 (Toll Free). **Commercial Enquiries:** 0172-5048398

**Email:** [info@crystalfaucets.com](mailto:info@crystalfaucets.com), [www.crystalfaucets.com](http://www.crystalfaucets.com)

ANDAMAN AND NICOBAR 9444401245. ANDHRA PRADESH 9444401245. ARUNACHAL PRADESH 9835096482. ASSAM 9835096482. BIHAR 9835096482, 9334067420. CHANDIGARH 9878696351, 9872654234. CHHATTISGARH 8591173214, 9752235783. DADRA & NAGAR HAVELI 9444401245. DAMAN & DIU 9878696351. DELHI 9878696351, 9872654234. GOA 9970282411. GUJARAT 9878696351. HARYANA 9878696351, 9872654234. HIMACHAL PRADESH 9878696351, 9872654234. JAMMU & KASHMIR 9878696351, 9872654234. JHARKHAND 9835096482. KARNATKA 9989964455, 8968046324. KERALA 9256019690, 7356541817. LAKSHADWEEP 9256019690. MADHYA PRADESH 8591173214, 9752235783. MAHARASHTRA 9970282411. MUMBAI 9878696351. MANIPUR 9835096482. MEGHALAYA 9835096482. MIZORAM 9835096482. NEPAL 9835096482, 8591173214. NAGALAND 9835096482. ODISHA 8591173214, 9437072400. PUDUCHERRY 9256019690. PUNJAB 9878696351, 9872654234. RAJASTHAN 8591173214. SIKKIM 9835096482. TAMILNADU 9444401245, 9940961118. TELANGANA 9444401245. TRIPURA 9835096482. UTTAR PRADESH 8591173214, 9369638531. UTTARAKHAND 9878696351. WEST BENGAL 9835096482.



[crystalsanitaryfittings](https://www.facebook.com/crystalsanitaryfittings)



[#ark\\_crystal](https://twitter.com/ark_crystal)



[arksanitaryfittings](https://www.youtube.com/channel/UCkSjYkGfYkGfYkGfYkGfYkG)



[crystalsanitaryfittings](https://www.instagram.com/crystalsanitaryfittings)

FAUCETS | SHOWERS | FLUSHING SYSTEMS | PRESSURE SOLUTIONS | SENSORS | BATH DECOR

## JSW Cement signs Memorandum of Understanding with Punjab Renewable Energy Systems to source agri-waste for biomass fuel in manufacturing operations



4

JSW Cement, India's Leading Green Cement Company & part of US\$ 13 billion JSW Group, has signed a Memorandum of Understanding (MOU) with Punjab Renewable Energy Systems Pvt. Ltd (PRESPL) to use agricultural waste as biomass energy in its cement-manufacturing operations. Punjab Renewable Energy Systems is India's largest biomass aggregation and densification company. According to the MOU, Punjab Renewable Energy Systems will build a sustainable supply chain of agricultural waste to be utilized as biomass energy in the clinkerization and grinding process of JSW Cement at its manufacturing units.

The biomass-based fuel model will help JSW Cement address three key aspects of Sustainability i.e. Environment, Social and Economic. Agri-waste is usually burnt in open fields which impacts the surrounding air quality. JSW Cement will use agri-waste as fuel to help

reduce its business dependency on coal and cut its carbon emissions. This fuel model will also improve the ambient air quality of the local environment while helping farmers generate additional income.

According to Mr Parth Jindal, Managing Director of JSW Cement, "The circular economy principle is an integral part of our business model. Last year, we made a small beginning wherein nearly 5 percent of our fuel requirement was met through alternate fuels. Our collaboration with Punjab Renewable Energy Systems will help us further strengthen our alternative fuel strategy with the introduction of Biomass fuel in our operations. This will not only help us reduce our carbon emissions but enable us to help Indian farmers reap economic benefits from the agricultural waste while improving the ambient air quality." ■

### **For further details, please contact:**

*Frederick Castro*

*Mobile: +91 99206 65176*

*Email: frederick.castro@jsw.in*

*Mithun Roy*

*Mobile: +91 98190 00967*

*Email: mithun.roy@jsw.in*



## Godrej Interio strengthens it's infra business; aims to clock INR 300 crore revenue in FY23



*Seeks to acquire 15% market share by FY25*



Godrej & Boyce, the flagship company of the Godrej Group announced that its business Godrej Interio, India's leading furniture solutions brand, in home and institutional segments, announced that it will strengthen its infrastructure arm of business and eyes INR 300 crore in the next fiscal. The brand plans to acquire 15% market share by FY25.

Since 2019, the brand has already booked infra projects worth 450 Crore. The general scope of work in the infra projects include civil finishes, cladding, block works, facade glazing, interiors, art forms and architectural finishes. Godrej Interio is committed to strengthening its market position via their infra arm by providing complete end-to-end solutions from concept to completion. The team of experienced space planning professionals includes architects, interior designers and project managers to ensure a seamless experience. In addition to general contracting, Godrej Interio offers design and execution of civil and interior work,

MEP systems, security and surveillance, green consultancy, and audio-visual solutions.

Anil Sain Mathur, COO, Godrej Interio said: "Infrastructure projects in India have always been a focus area for us and one that we believe has a lot of growth potential with the estimated addressable market around INR 5,000 crore. Currently, our turnkey projects contribute up to 40% of our turnover from the B2B segment. Through our expertise in delivering turnkey solutions and participating in India's vision to build a strong public transportation network across the country, we have been working closely with the respective metro rail corporations and airport authorities to deliver a world-class experience for commuters. We are certain that these innovative design solutions will help our partners, metro projects immensely and meet the highest standards in both looks and functionality."

Godrej Interio has already partnered on four metro rail projects across the country including Kolkata, Bengaluru, Mumbai and Kochi. As metro stations in many parts of the world reflect the culture of the city, Godrej Interio on customer request has also helped in implementing the city culture at its metro projects. ■

**For further details, please contact:**

please visit <https://www.godrejinterio.com/>  
Contact: Elizabeth Bocarro  
+91 9819279154, ebocarro@godrej.com



**INDIAN ARCHITECT AND BUILDER**

**CHAIRMAN**

Maulik Jasubhai Shah

**PUBLISHER & CEO**

Hemant K. Shetty

**SUB-EDITOR**

Sudhanshu Nagar

**CREATIVES**

Arun Parab

**GENERAL MANAGER SALES**

Prashant Koshti

Amit Bhalerao

**BRAND MANAGER**

Sudhanshu Nagar

**SALES**

Priyaranjan Singh

Godfrey Lobo

Chandras M Amin

Yonack Pradeep

Indian Architect & Builder: (ISSN 0971-5509), RNI No 46976/87, is a monthly publication. Reproduction in any manner, in whole or part, in English or any other language is strictly prohibited. We welcome articles, but do not accept responsibility for contributions lost in the mail.

**JASUBHAI MEDIA PVT. LTD.**

**Registered Office:** 26, Maker Chambers VI, 2<sup>nd</sup> Floor, Nariman Point, Mumbai 400 021, INDIA. Tel.: 022-4037 3737  
Fax: 022-2287 0502, E-mail: sales@jasubhai.com

**PUBLISHED BY:**



**4 Industry News**

**ARCHITECTURE**

**10 SOPANAM - A Fusion of Traditional Sensibilities with Modern Technology**

An honest/sincere attempt at creating a contemporary Eco Stay. The property, is Located amidst the majestic mountains of Vagamon, the fringe of Western Ghats in Central Travancore..

**22 Vasant - The Blooming House**

A home must be a reflection of one who stays in it. Each space is a reflection of their aspirations for a modern and luxurious lifestyle.

**32 A House for a beautiful family with an Artistic sculptural form**

In the heart of the city - Tenkasi, Tamilnadu, Mr. Abdullah and his family's Dream house is being constructed with beautiful Twisted rooms in the facade and surrounded by landscaped area.

**INTERIOR**

**40 Showcasing an Aspirational Lifestyle through Innovations**

A house is a machine for living in' said Le Corbusier. Thus to make this machine worthy Elements, spaces, materials can be used in most thrilling and attractive ways, to showcase an aspirational lifestyle..

**Cover: © Ar. Tushar Chandak**



## FORM IV

Statement about ownership and other particulars about newspaper **INDIAN ARCHITECT & BUILDER** to be published in the first issue every year after the last day of February

1.	Place of Publication	Mumbai
2.	Periodicity of its Publication	MONTHLY
3.	Printer's Name	NA - ONLINE PUBLICATION
	Nationality	
	<sup>1</sup> [(a) Whether a citizen of India?	
	(b) If a foreigner, the country of origin]	
	Address	
4.	Publisher's Name	HEMANT K SHETTY
	Nationality	INDIAN
	<sup>1</sup> [(a) Whether a citizen of India?	YES
	(b) If a foreigner, the country of origin]	NOT APPLICABLE
	Address	406-D, Karachi Citizens CHS, Juhu-Versova Link Road, Andheri (West), Mumbai - 400 053.
5.	Editor's Name	MAULIK JASUBHAI SHAH
	Nationality	INDIAN
	<sup>1</sup> [(a) Whether a citizen of India?	YES
	(b) If a foreigner, the country of origin]	NOT APPLICABLE
	Address	26, Maker Chamber Vi, Nariman Point, Mumbai 400 021
6.	Names and Addresses of individuals who own the newspaper and partners or shareholders holding more than one per cent of the total capital	JASUBHAI MEDIA PVT LTD. 26, Maker Chambers VI, Nariman Point, Mumbai 400 021 Maulik Jasubhai Shah (1100, Shanudeep, 10, Altamount Road, Mumbai 400 026), Maulik Business Services Pvt. Ltd & Jasubhai Business Services P Ltd., (26, Maker Chamber VI, Nariman Point, Mumbai 400 021)

I Hemant K Shetty, hereby declare that the particulars given above are true to the best of my knowledge and belief.



Date: 29<sup>th</sup> January 2022

Signature of Publisher

Connect, Engage & Collaborate with **>75,000**  
architects & interior designers with **IAB DIGITAL**

### connect

art, architecture, design  
professionals & students

### engage

brand awareness & expand  
customer portfolio

### reach

more than  
75,000 inboxes

### customize

new avenues for  
business leads

### explore

new avenues for reaching  
the target audience



**IAB**



[www.iabforum.com](http://www.iabforum.com)

[www.jasubhaimedia.com](http://www.jasubhaimedia.com)



## Greenply joins hands with IPL 2022 franchise Lucknow Super Giants as Associate Partner



*Players and official members of Lucknow Super Giants to sport the Greenply logo on the right-side chest of their official match day jersey. The company to focus on strategic investments for Uttar Pradesh market to expand its business operations.*



Greenply Industries Limited, India's largest interior infrastructure company with over 30 years of experience in manufacturing and marketing a comprehensive range of plywood, decorative veneers, flush doors and other allied products, today announced its association with the first ever team from Uttar Pradesh in the T20 tournament, namely Lucknow Super Giants as Associate Partner of the franchise. Mr Rajesh Mittal, Chairman cum Managing Director, Greenply Industries Ltd. & Mr. Manoj Tulsian, Joint Managing Director & CEO, Greenply Industries Ltd. were present during the press conference which was organised in Lucknow to announce the association. Mr Raghu Iyer, CEO, Lucknow Super Giants & the Team also graced the occasion attending

the Conference virtually. Uttar Pradesh being the second largest plywood market by value, the association will help Greenply to enhance its brand and business presence across the state and nationally.

Uttar Pradesh has the highest 5-year CAGR growth projections for a state and serves as the second largest plywood market as per value. Since Uttar Pradesh is a growing market, Greenply is expanding its plywood & allied products capacity by investing approx. INR 200 crore in the state.

The company is setting up a manufacturing unit at Sandila Industrial Area in Hardoi, Uttar Pradesh which will be its own manufacturing; one unit in Hapur and two units in Bareilly through partnership. The combined capacity of these units will be 31 million square metre per annum. The company aims to generate revenue of upto approx. INR 550 crore through these units. The units will help to generate livelihood by providing employment to approx. 1600 skilled/unskilled workers. ■

## Designed for modern architect and stunning interiors, Hitachi's award-winning Silent-Iconic™ 4 Way Premium VRF Cassette to take Stylish Ceiling Air Conditioners to next level in India

*Silent-Iconic™ Cassette AC is designed to be 'visually silent' and blend in with architectural spaces, while delivering high-performance cooling and heating needs*



Reinforcing its leadership position in air-conditioning technology, Hitachi Cooling & Heating India has today introduced its award-winning Silent-Iconic™ 4-way premium VRF Cassette AC for the Indian Market. Hitachi Cooling & Heating is the inventor of the World-1st 4-way cassette air conditioners. Reimagining air conditioning technology and iconic spaces of the new informed world, new 4-Way Cassette Indoor Unit, Silent-Iconic™ aims to offer a premium experience integrating with the new-age design and décor needs of Modern Architects, Interior Designers, and high-end consumers in the residential and commercial segment.

The product has been recognized for its design excellence across the globe and has received international product design awards including the iF Design Award 2020 in the Product

category, the Good Design Award 2020, and the Red Dot Best of the Best Product Design 2021.

Silent-Iconic™ is inspired by Hitachi's 'Duality Design' philosophy called 'Soku-Hi' in Japan. By blending 'Function & Form' together into balance, it delivers the best of both to users.

Addressing the launch of this tech and design marvel, Mr. Gurmeet Singh, Chairman, and Managing Director, Johnson Controls - Hitachi Air Conditioning India Limited said, "Stunning interior designs matched with superior air conditioning has become the need of the New Informed World spaces. It has gained a significant position in all commercial environments and has a direct impact on the customer's experience at premium spaces. Catering to the modern architects and interior designers' demand for integration of AC units into interiors and Hitachi's quest to deliver aesthetics uniqueness, the idea of Silent-Iconic™ 4-way cassette AC was born. We are delighted to introduce our award-winning innovation Silent-Iconic™ 4-way Cassette AC for Indian architects, interior designers, and premium customers. This product is aimed at offering a new-age option that is "visually silent", and that does not interfere with the look and feel of the interior." ■



# SOPANAM - A Fusion of Traditional Sensibilities with Modern Technology

An honest/sincere attempt at creating a contemporary Eco Stay.

*Text: Architect Team: DH\_Ecological Design Solutions,*

*Photo Credits : Ms.Nimmy Nixon*



The property, is Located amidst the majestic mountains of Vagamon, the fringe of Western Ghats in Central Travancore. Vagamon is a charming hill station featuring misty hills, rocky terrains, lush grasslands, massive tea and cardamom plantations and a wide variety of

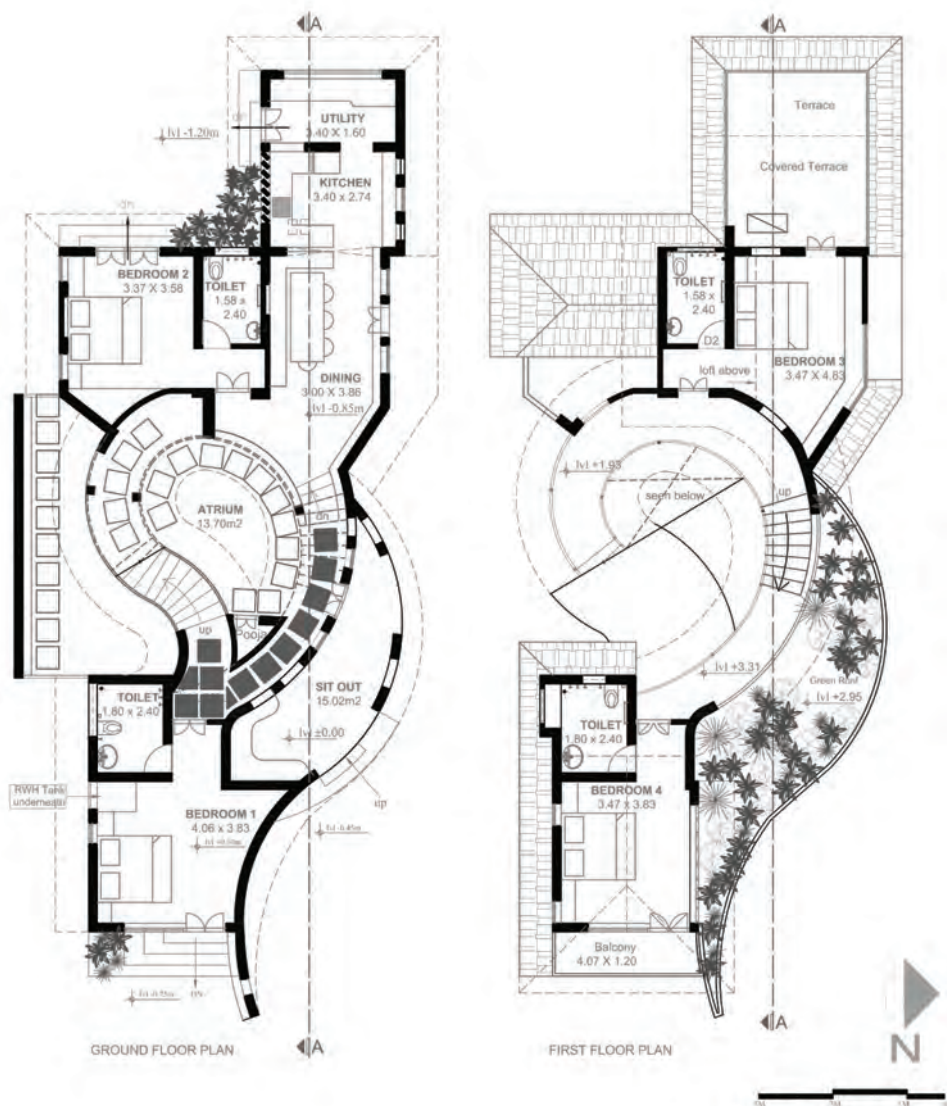
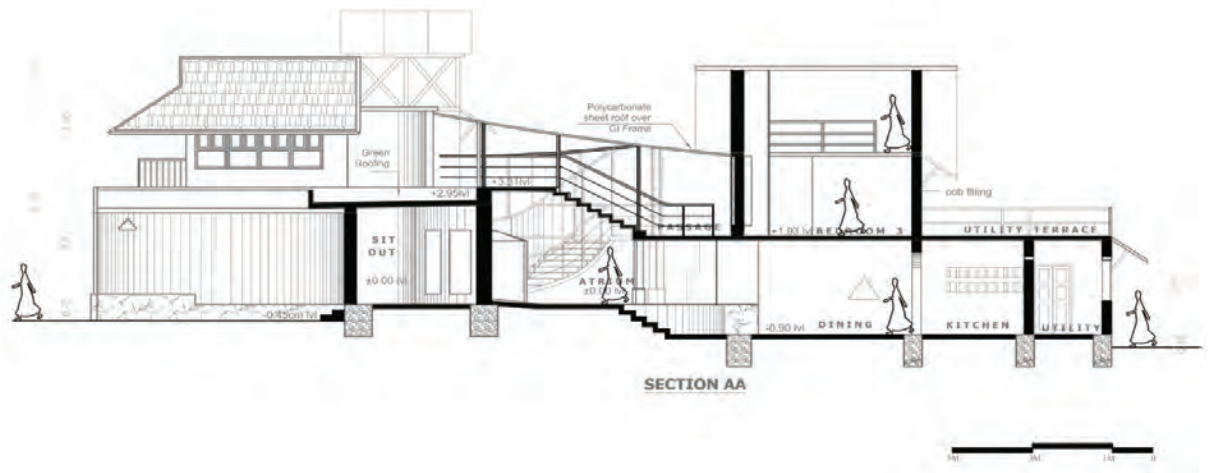
flora & fauna. The climate is dominated by the foggy chill rainy season, during which sunlight is mostly a no show, dampness & mold covers everything from clothes to the walls. The dry season, though hardly 3-4 months, however brings in scorching sun, and an overall dryness in the air.



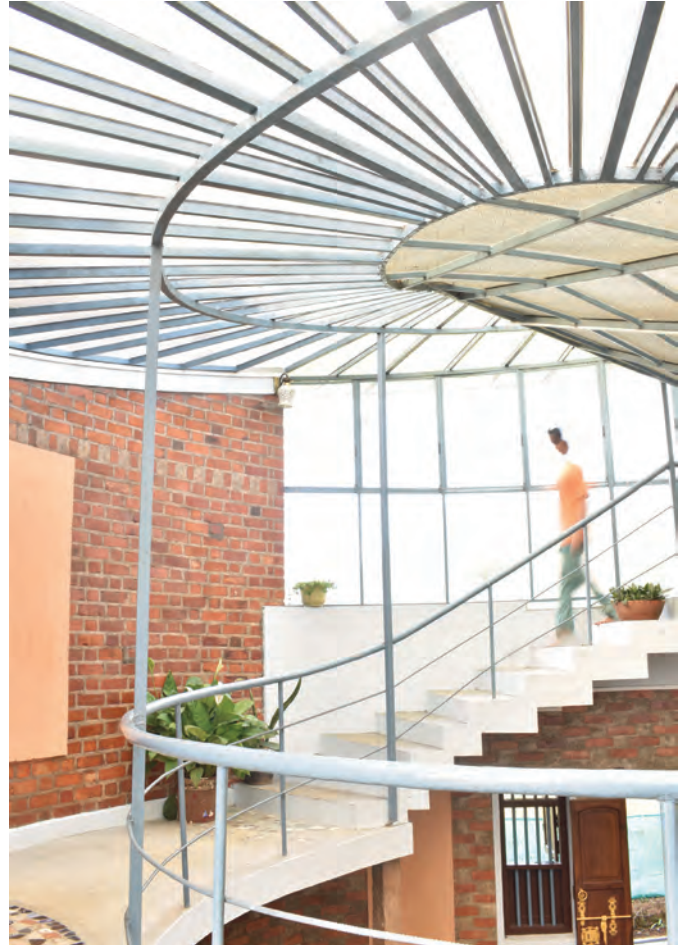




























The Site - A meadow 2m and above from road level with a few scattered guava trees in front (east), gushing south Westerly breeze from the rear (west), view of mist clad cliffs towards the North East, a rolling down meadow on the north, and neighbouring houses on West and south. The site has a narrow frontage which extends deeply within.

Vagamon, same as most of the other mountains along the region, is today facing encroachment of the unaesthetic unplanned development catering to mass tourism. The hills all over are punctured by

concrete constructions that donot value the Sensibilities of the mountains and stand out as a stark contrast.

Given this context, as the design team catering to similar requirements, what we were very sure of not doing, was repeating what we saw around us. The client had a liking towards tradional Kerala architectural aesthetics, which encouraged us to explore the idea of a fusion of the tradional Sensibilities with advantages of modern technology.

The client was very specific about interiors where the furniture layout can be changed



time and again by the family. Considering the need for furnishing flexibility, most of the functionally intense spaces have been designed as rectilinears, spread along the east - west orientation of the footprint. The central living atrium of the house, however, is a stark contrast in a mango profile (an ode to the mango mania of Ar.Laurie Baker, the most prominent inspiration in all our works). The sitout is yet another curve, enhancing a very rhythmic contrast between the rectilinear edge profiles and the central atrium. This inclusion of curves is also an inspiration from the given context of natural

settings, nature is all about curves! Being surrounded by meadows and mountains, we wanted the building coverage to subtly blend in from the inside to the out, and outside to the in. A central green roof above the expansive sit out, pre - owned native terrocotta tiled roof for the rest of the rooms and a completely transparent sheet roof for the central atrium very politely blends the property into its natural setting.







## CONCEPTUAL IDEAS:

- Traditional Sensibilities
- Acknowledgment of the existing Land Aesthetics and Sensitivity, saving all existing trees on site
- Climate Responsiveness
- An Exploration of the potentials of modern technology
- Reduce, Reuse, Recycle
- Baker's Mango Mania - Being from the Laurie Baker school of philosophies, a tribute to the Architect is something we try including in all our projects.

## SPECIAL FEATURES

A play of levels - each of the 4 bedrooms is on a different floor level. A gradual gradation inspired from the surrounding meadows.

An Open Plan - A central atrium/ common space with a transparent polycarbonate sheet roof is the light well and focal point of the house, creating a grand first impression right from the main entry. A 3' deep level difference is the only sense of partition between the atrium and the dining/kitchen. Wall partitions have been completely avoided.

An unobstructed vertical and horizontal spatial connection.

Each of the two bedrooms on the ground levels have separate Patios and each of the bedrooms on the upper levels are provided with separate balconies, to enhance the experience of stay. An Intermediary Semi

Intensive Green Roof. Rain Water Harvesting Sump - 27,000L capacity ; overflow directed for Borewell recharge.

Soil accumulated from RWH Sump excavation used for making Cob, Mud Mortar, Basement infill, Mud Plastering, Green Roof infill. Waste Stirrups & Metal from junkyard, used as grills. Wasted glass bottles are used as fenestration mural detail

JOINERY - sourced in from 2 old demolished homes within 50 - 70 km radius. Old terracotta infilled filler slabs for internal floor slabs the driveway was designed to cause minimum disruption to the land. 75% of materials used can be reclaimed if dismantled systematically. ■

## FACT FILE

Project	: SOPANAM - A Homestay
Location	: Vagamon, Kerala
Architect: Team	: DH_Ecological Design Solutions, Ar. GISNY GEORGE , Project Lead Ar. HELLY SOLANKI, Co-Architect
Client	: Mr. Ranjith & Mrs. Shiny
Project Area	: 2400sq.ft.
Structural Engineer	: Mr. Samuel, Elanthoor & Mr. Sudarshan, Bangalore
Project Estimate	: ₹60,00,000/-
Initiation of Project	: 2019
Completion of project	: 2021



# Vasant - The Blooming House

Text Credit : Ar. Tushar Chandak

Photo Credit : Yogesh Mahamuni Photography



"We believe a home must be a reflection of one who stays in it. Here the idea was to create this house in the modest, 3500 sqft east facing plot, overlooking to the beautiful trees in the front. Understanding the family needs was more important, but keeping aesthetic in the focus. We designed the whole house on theme keeping it sophisticated yet luxurious. Each space is a reflection of their aspirations for a modern and luxurious lifestyle. With a


minimal furniture, we successfully created a luxurious environment. Materials and design are perfectly balanced by using different textures and colours.

The open plan home is designed to create interactive, semiprivate and private spaces with an over view to a central open to sky. The double height court brings natural light and glimpse of nature to a space.







The image shows the exterior of a modern, multi-story house at night. The house features a prominent geometric facade made of concrete panels, some of which are illuminated from within, creating a warm glow. Large openings and grooves in the facade break the monotony of the concrete. A courtyard with a tiled floor is visible in the foreground, enclosed by a white wall with a decorative geometric pattern. A small potted plant is visible on the right side of the courtyard. The sky is dark blue, and the overall atmosphere is modern and sophisticated.

**External View:** The interesting geometric facade made up of texture and concrete creates a contrast that reflects on the spatial experience one has inside the house. Big openings & grooves breaks the monotony of the concrete by adding interest to the space. The spaces are designed such that they are visually interconnected, horizontally as well as vertically.





**Entrance & Staircase :** The most important element in any building is always a challenge to do it differently. Ganapati Shlok carved on teak wood is highlighting part of main door & free flowing white border on staircase makes entrance more interesting.



**Living Room:** Blended in a drama of colour, Laser cutting, Artifacts & lights make it a dash of luxury. Double height entrance with open to sky above allows natural light & ventilation streaming in abundance & connects spaces vertically.





**Living & Dinning:** We tried to create a unique environment for every area with customized wall murals and an eclectic material palette. While each area has its own sense of individuality, the flow of materiality and the detail to personalization ties the entire space together.





**Home Theater cum Family Hall:** The earthy texture on the wall, The muted tones of the fabric, Shahabad flooring with grooves, Play off the custom screen and wood accents of the furniture making this room a space with balance and grace.





28




**Master Bedroom:** Vibrant mood boards of textures, patterns and finishes layered one on top of the other, Bay window is designed in a way that would allow the space to feel open and airy with a touch of India Modern.





**Mediation Space:** Abundance of Light, double height open to sky, greenery integrated with interiors, Space to mediate & each decor detail around the space echoes this view in a subtle way.





**Puja Room:** While designing this space we kept in mind to make it look pleasant and positive and hence very simple shades of contemporary whites with golden elements are used to give it a calm yet poised look.





## Clients Words



*A Home is a dream of every person. As it was our dream home we had gone to many Architects, discussed about our requirements and all we were willing of. But when we discussed it with Ar. Tushar Chandak(Sir). His passion for our dream was like his dream & we finalized him.*

*To work with dignity n full dedication as if the home is their own and make the dream to reality is what i have seen in Sir. The best quality of Sir is specially he listens to everyone's requirement and converts it into reality In very simple way . The best part of the house is double height in hall which connects all spaces horizontally as well asvertically. I Highly Appreciate & Hats off to Team for the dedication for the project” .*

Today's time demands customization in each and every corner like vanity units also. So we took 'mix and match' approach. Each space is a reflection of their aspirations for a modern and luxurious lifestyle. The elementary requirement of privacy and togetherness drove the concept and development of this Bungalow design which was based on "eclectic and modern classic theme". ■

## FACT FILE

Project	: 5BHK bungalow (Residential project )
Location	: Ahmednagar, Maharashtra.
Architect	: Ar. Tushar Chandak
Team	: Ar. Tushar Chandak, ID. Snehal Chandak Er. Omprakash Chandak
Client	: Prafulla L. Banthia.
Project Area	: 5,500 Sq. Ft
Structural Engineer	: Er. Avinash Kulkarni
Civil contractors	: Er. Omprakash Chandak
Photo Credit	: Yogesh Mahamuni Photography.



# A House for a beautiful family with an Artistic sculptural form

*Text credit - Nasreen*

*Photos credit - Bala Photography*



32

In the heart of the city - Tenkasi, Tamilnadu, Mr. Abdullah and his family's Dream house is being constructed with beautiful Twisted rooms in the facade and surrounded by landscaped area.

The design idea was to provide a beautiful contemporary house creating exciting spaces and surprising elements featuring in the building. As a way of life, the house

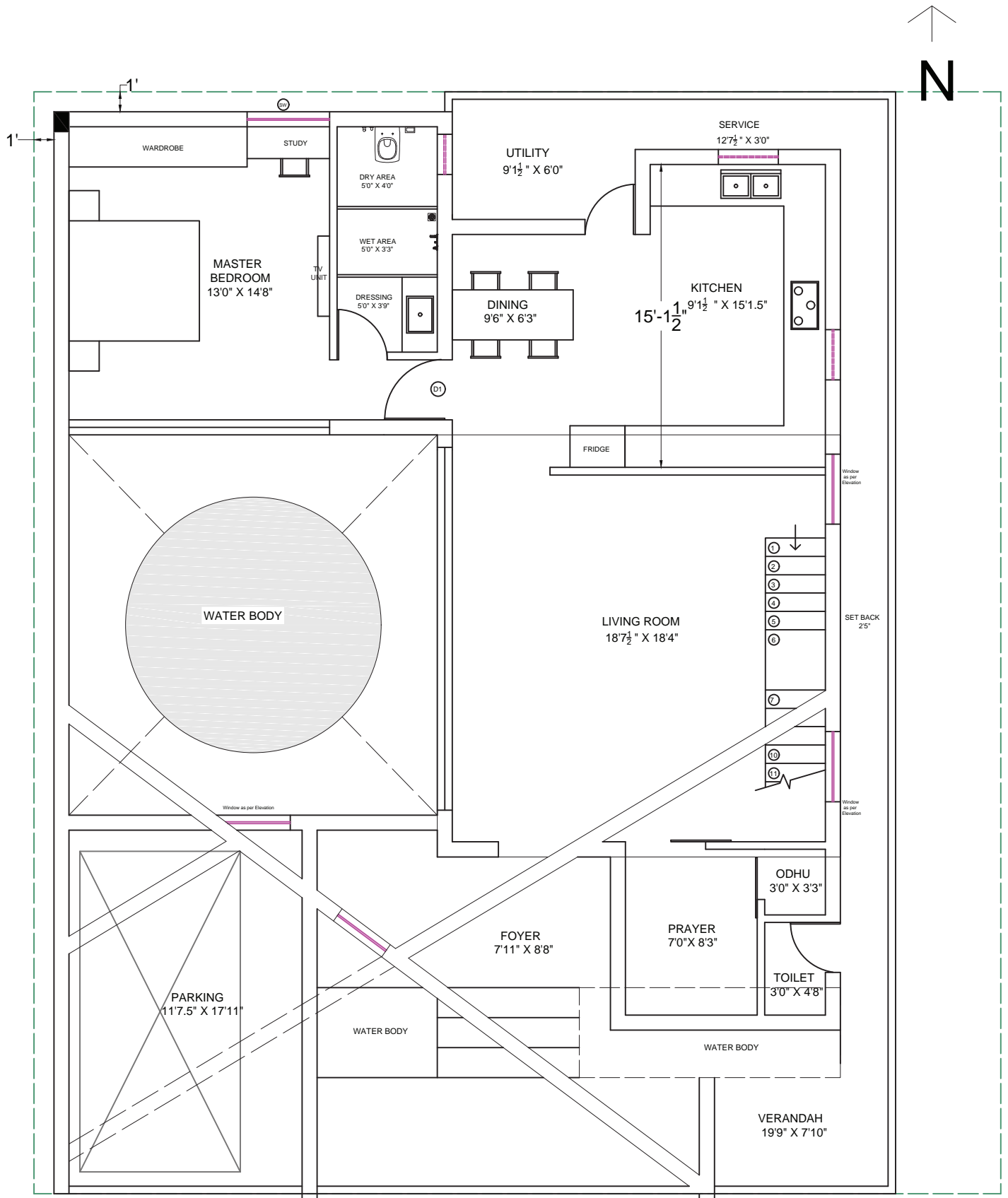
should provide a complete living web that reflects the lifestyle of their family.

The House should be as ample and comfortable as possible. Effective ventilation and lighting are very important. Gardens and Water bodies have been part of the building. These features have been aesthetically and functionally infused in this house.





























Passive Energy efficient methods like Rat Trap Bond, Filler Slabs, Orientation of the room, Placement of the Openings were done to reduce the Heat Gain of the building.

The use of local materials such as stone, exposed brick and other materials helps in reducing the cost of construction and makes the buildings more responsive to the climate, hence giving us a better atmosphere within the house.

A huge courtyard at the center gives natural lighting to all spaces on each floor. This Courtyard allows Cool air to move inside and Hot air rises up which in turns create a Stack in the top resulting in Buoyancy Ventilation.

The design concept is been inspired from the visionary architect Bjarke Ingels who says " Architecture is about trying to make the world a little more like our Dreams." ■

#### FACT FILE

Project	: Casa de Abdullah
Location	: Tenkasi
Architect Team	: N J Zubair Nainar, Jamal, Fathima, Nasreen, Mohammed Khaja
Client	: Sheik Shahul Hamed
Project Area	: 2000 SqFt
Structural Engineer	: Jamal Mohamed Abdullah
Civil contractors	: Jamal Mohamed Abdullah
Developers	: Jamaliah Arkitects
Manufacturers	: Fenesta Systems, Yale, Jaquar, Philips
Project Estimate	: 40,00,000 /-
Initiation of Project	: 2019
Completion of project	: 2022



# Showcasing an Aspirational Lifestyle through Innovations

'A house is a machine for living in' said Le Corbusier. Thus to make this machine worthy Elements, spaces, materials can be used in most thrilling and attractive ways, to showcase an aspirational lifestyle.

*Photography: Dhrupad Shukla*

*Text: Dhanvi Savsani*







**VESTIBULE:** The existing four bedroom apartment had an abundance of daylight and ventilation through huge fenestrations. At the entry itself one would be welcomed by God Shreenathji mural which is reflecting belief of the client and patterned Corian is enhancing the mural by giving backdrop to it. As conventional shoe rack is prime alternative, but carved wooden shutter and metal frame is taking different stand for vestibule space.

**LIVING ROOM:** It is characterised by neutral color palette of sofa, rug embellished with center table is highlighting with

existing RCC wall and carving on that wall. Combining living and drawing room in one and placing sofa away from the wall is very conscious decision to provide luxury. Wooden cabinet with brass Patti detail, painting on it and tile clad TV unit is completing the look of a room.

**DINING AREA/KITCHEN/PUJA:** Minimal SS brushed finish plate dining table with wooden legs and white patterned cabinet and textured wall is giving softness to the space where yellow fabric of dining chair and painting on wall is creating a drama into it.





Pooja area wall carved with numerous cows' composition which is showing client's keen attachment with God Krishna and L-shaped perforated partition of Pooja room is spreading its essence all around.

Simple colour palette with wooden cabinets and small breakfast table is providing small barrier between kitchen and dining, and is giving elegant look to kitchen.

Moving further the passage is designed in sophisticated manner connecting to all the bedrooms. The material of passage used in such a way that it creates a sense of mystery.

**MASTER ROOM:** Delicately designed master bedroom is combination of simplicity and drama. Vertical brick cladding on a wall and Italian inlay with brass patti is giving different vista to the room. Stark contrast of orange color in sofa and shelves also Green colored painting on shutter of shelf above study table is giving bright look, where study table made with metal table top and wooden legs is giving gentle look in the room.

**PARENTS ROOM:** While the second room is designed simply with stoner cladding, minimal backrest and white carved MDF

















46















back. While use of Veneer in the room on the wall and door is giving warm feeling as it is designed for grandparents. While painting which is also acting as study table beside veneer cladded wall is giving finesse to each other.

**DAUGHTERS ROOM:** This room achieves stylish and serene ambience with colors of their choice. MS framed study tables is giving hanging look to it and composition of circular tag board is providing connection to both the tables. Where portraits of daughters in circular shape on the wall is supporting the language of a room.

While wooden simple cabinets and well composed dressing area is giving dignity to the room.

**MULTIPURPOSE ROOM:** Fourth room is converted as multipurpose room. Mustard fabric sofa, minimal centre table is combining with black cabinet and blue tag board gracefully. Design of ceiling with wooden logs in this room is giving vibrant feeling to the room.

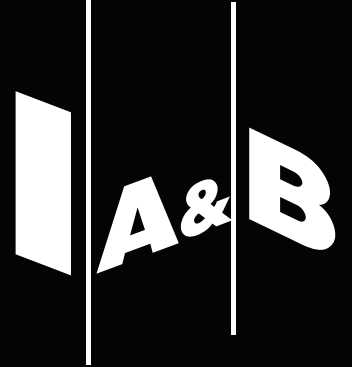
Italian flooring and exposed RCC textured ceiling is giving rhythmic flow to whole apartment. Functions which are hidden with furniture though it is maintaining their identity is a unique part of this flat. Pleasing interiors are all about right proportions and a good mix of colors and materials. This apartment becomes a perfect house that represents every space individually but gives a perfect ambience as a whole. ■

#### FACT FILE

Location	: Bodakdev, Ahmedabad
Architect Team	: Shweta Pandya, Krishna Patel
Client	: Mr Chirag Patel
Project Area	: 2800sqft Carpet area
Project Estimate	: 60lacs
Initiation of Project	: 2019
Completion of project	: 2021
Sevices offered	: Interior design



Connect, Engage & Collaborate with **>75,000**  
architects & interior designers  
with **IAB DIGITAL**



## connect

art, architecture, design  
professionals & students

## reach

more than  
75,000 architects & interior designers

## explore

new avenues for reaching  
the target audience

## engage

brand awareness & expand  
customer portfolio

## customize

new avenues for  
business leads

