

A&B

ARCHITECTURE
Baag-e-Fursat
A Three-Villa Complex in Kuwait
Creating healthcare Spaces for Children





DOES HEAT BELOW YOUR ROOF CAUSE STRESS TO YOUR EMPLOYEES ?

INSTALL HINDALCO EVERLAST ALUMINIUM ROOFING SHEETS

Hindalco Everlast Roofing Sheets make complete business sense:

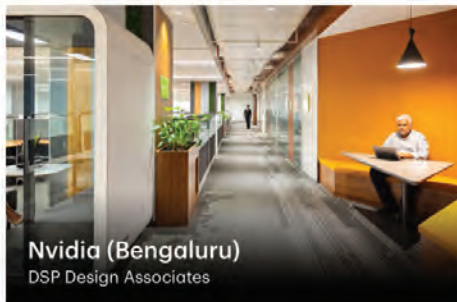
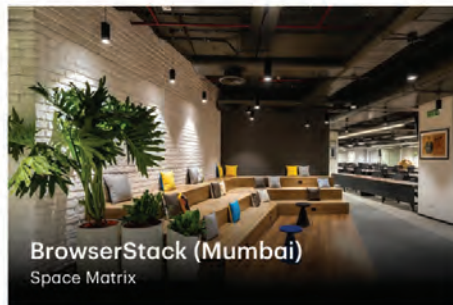
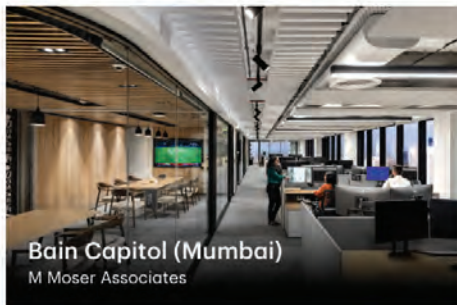
- Moderate temperature below the roof
- Do not rust, needing no maintenance
- Good resale value vis-à-vis other roofing materials
- A quality product from Hindalco - the world leader in aluminium rolled products



NETWORK HEI031 19

For more information, please call: 1800-103-9494. E-mail: hindalco.everlast@adityabirla.com | www.hindalcoeverlast.com

Shaw Contract announces Best of Region 2022 winners for India



The Best of Region winners for India are:

- Bain Capital, Mumbai designed by M Moser Associates.
- BrowserStack, Mumbai designed by Space Matrix Design Consultants Pvt Ltd.
- Nvidia, Bengaluru designed by DSP Design Associates.
- Standard Chartered Bank, Bengaluru designed by M Moser Associates.
- TAJ Lakefront, Bhopal designed by JOI-Design.

The Best of Region winners from India will now proceed to the next stage of judging to select the "best of the best"- our

Best of Globe Winners which will be announced in October.

Now in its 17th year, the Shaw Contract (a brand of Shaw Industries, a Berkshire Hathaway Group Company) Design Awards once again places a spotlight on a diverse range of talents from across the globe, celebrating design in action and its social impact on the community. ■

The 2022 edition of the Shaw Contract Design Awards had almost 600 incredible submissions from 44 countries, across nine regions (Asia, Australia & New Zealand, Canada, Greater China, Latin America, Middle East & Africa, UK & Continental Europe, USA and India).

Of them, 37 projects were selected as Best of Region Winners by a diverse range of judging panels across the globe. The judging event for India was held at Taj Fisherman's Cove, Chennai on 12 July 2022.

Godrej Security Solutions study reveal that only 28% Indians associate Home Security to being 'Safe & Sound'



Boosts investment in technology and innovation to bridge the gap between awareness and adoption of home security solutions

4 What does 'Safe & Sound' mean? Since the pandemic, there has been a massive shift in India's security habits. Even though the crime rates continue to rise, Indians prioritize health and physical security over home security. Given the increasing gap between the awareness and adoption of home security, Godrej Security Solutions, a business of Godrej & Boyce, the flagship Company of the Godrej Group, has conducted a study called 'Decoding Safe and Sound: in the Indian Context'. The study reveals that 'Safe and Sound' to Indians are based on three key contexts: Health wellbeing, property security and technology safety. 42 % of respondents associate 'Safe and Sound' to the wellbeing of their own health and to that of their loved ones.

With the pandemic easing out and people moving out of their homes, it was shocking to know that only 28% of the respondents associated Safe and Sound to their property and possessions. The focus on health wellbeing was re-emphasized when 31% of respondents said that they were most likely to opt for contactless options even while looking at home security solutions. Godrej Security Solutions has in the past two years introduced a range of contactless security solutions. The category has seen a 20% Y-o-Y growth in sales. The study also revealed that men were more

disposed to opting for contactless solutions than women.

Mr Pushkar Gokhale, Business Head at Godrej Security Solutions said, "With rising crime rates it's important to focus on physical as well as network home security. With emergence of technology, there are an abundance of home security solutions in the market. However, what we have gathered from the study is that while there are solutions, there is a huge gap in the awareness and adoption of these technological solutions. The main objective behind this survey was to bring forth to people the need for security, make them aware of the solutions that are there in the market and how home security solutions can lead to a safer, more convenient, and flexible routine. ■

Greenply Industries launches its new product “Green Platinum”



~The CARB certified products also come with 2x fire resistant, waterproof and money back warranty features~



Greenply Industries Limited, one of India's largest interior infrastructure brands with over 30 years of experience in manufacturing a comprehensive range of plywood, block boards, decorative veneers, flush doors, and other allied products,

today announced the launch of its new product “Green Platinum”. The exquisite product portfolio will fall under Greenply’s E-0 range of products.

Greenply Industries Limited has been at the forefront of driving innovation across its products and processes keeping the consumer health, safety, and well-being in mind. With the accelerated transformation in the interior sector post pandemic, the company introduced its fire-resistant plywood with E-0 compliance “Green Platinum” which is two times as effective in fire-resistant and waterproof properties as compared to other available plywood in its range. The product comes with PEN Tech technology which adds a protective mesh between the layers as well as on the surface of plywood, rendering it two times more fire resistant. The technology helps

the product to function as a barrier to restrict the rapid spread of fire and helps to emit less smoke. Green Platinum is also enriched with an un-extended BWP resin rendering it two times as boiling waterproof as compared to regular fire-resistant plywood.

Salient features of Green Platinum

- E-0 compliant
- Fire Resistant & Waterproof
- Un-extended BWP resin
- CARB Certified
- Manufactured through PEN Tech & The 4 Press Technology
- Borer and Fungus Proof, Anti-termite guarantee
- 30 years warranty with 2x money back warranty

Remarking on the launch of the new collection range, Mr. Sanidhya Mittal, Joint Managing Director & CEO, Greenply Industries Ltd said “With innovation and technology at our core, we strive to create products that are made to fit the evolving needs of consumers. Through our extensive research on consumer behaviours, we found that there was a need for a product which combines fire resistant, waterproof and emission proof features, thus we came up with the product Green Platinum with an added feature of money back warranty. Through our continuous R&D process, we will be coming up with more such eco-friendly product which will promote aesthetic living among the consumer base. ■

INDIAN ARCHITECT AND BUILDER

CHAIRMAN

Maulik Jasubhai Shah

PUBLISHER & CEO

Hemant K. Shetty

BRAND MANAGER

Sudhanshu Nagar

CREATIVES

Arun Parab

GENERAL MANAGER SALES

Prashant Koshti

Amit Bhalerao

SALES

Priyaranjan Singh

Godfrey Lobo

Chandahas M Amin

Yonack Pradeep

Indian Architect & Builder: (ISSN 0971-5509), RNI No 46976/87, is a monthly publication. Reproduction in any manner, in whole or part, in English or any other language is strictly prohibited. We welcome articles, but do not accept responsibility for contributions lost in the mail.

JASUBHAI MEDIA PVT. LTD.

Registered Office: 26, Maker Chambers VI, 2nd Floor, Nariman Point, Mumbai 400 021, INDIA. Tel.: 022-4037 3737

Fax: 022-2287 0502, E-mail: sales@jasubhai.com

PUBLISHED BY:



3 Industry News

8 Meraki-2022

A visionary Seminar series Presented by Dr.Baliram Hiray College of Architecture, Bandra(East), Mumbai.

ARCHITECTURE

10 Baag-e-Fursat

Ar. Harpreet Singh

A 8000sq. ft. of garden estate nestled deep within the rich landscape of Punjab!

20 A Three-Villa Complex in Kuwait

Ternion Villas by Studio Toggle

Composition of three independent villas in Kuwait. Variably stacked prismatic volumes create a porous pixelated massing achieving a harmonious balance between the opposing ideals of privacy and community.

32 Creating healthcare Spaces for Children

Niroppama & Shishiir Saawant, Fernleaf

An open plan concept where Partitions were used as envelopes to define spaces. The space used by the kids and objective was to make it playful, easy and fun to be.

Cover: © Studio Toggle



Digital Print Hub setting up new Photo quality benchmark with HP Indigo 12000 HD

First installation of HP Indigo B2 portfolio in Rajasthan to tap the growing needs of the photo market



HP Indigo offers a variety of digital printing presses designed to meet the needs of demanding 24/7 photofinishing businesses and peak season operations for any type of photo specialty application of any size. Keeping up with the latest digital printing solutions & commitment to meet the quality standards, Digital Print Hub has installed HP Indigo 12000 HD Digital Press at its facility in Jaipur, Rajasthan.

HP Indigo 12000 Digital Press offers smooth, superior print quality with HP's unique photo enhancing ElectroInks and High Definition (HD) FM imaging and screening technology. This press provides a holistic Photo printing solution along with wide versatility which will enable Digital Print Hub to produce the finest digital prints in B2 size. Equipped with HP Indigo's liquid electrophotography (LEP) technology, the digital printers produce crisp & attractive images, smooth vignettes with a very

thin ink layer that gives uniform gloss between the ink and substrate.

Speaking on the new installation, A Appadurai, Country Manager, HP Indigo & PageWide Web Press, HP India market said, "Over the past few years, the digital printing industry has undergone a paradigm shift and broadened the Photo print industry with lots of - innovations. Today, we have provided the power of innovation to our customers, and they are revolutionizing the Photo printing industry with the usage of the right colors, delivering high quality and cost-effective print in the speediest timeframe to Photographers & Photo Studios. We are proud to expand our alliance with Digital Print Hub and support them as a partner in achieving the highest standard of photo print quality by providing HP's digital technology" ■

For further details, please contact:
HP Inc.

DLF Cybercity, Phase III, Gurugram
Haryana 122002, Visit <http://www.hp.com>

'Meraki-2022'

*A visionary Seminar series Presented by Dr. Baliram Hiray
College of Architecture, Bandra(East), Mumbai.*



unite create | integrate
Confluence.

In order to create a dialogue between the students and professionals, Dr. Baliram Hiray College of Architecture, Mumbai organizes a Grand Seminar 'Meraki' every year. Conceptualized in 2014, 'Meraki' has revolved around a variety of themes showcasing the contemporary and vernacular styles of architecture which in turn helps the students to understand the intricacies involved and keep abreast with the global developments.

8

Last year, September 2021, we successfully concluded our eighth session. We broke record numbers with participants including Principals of various architecture colleges, academicians, professionals and students from all over Maharashtra. Last year Meraki was organized as a webinar, so that we could abide by the safety norms during the pandemic and learn from the seasoned architects, right from the comfort of our homes.

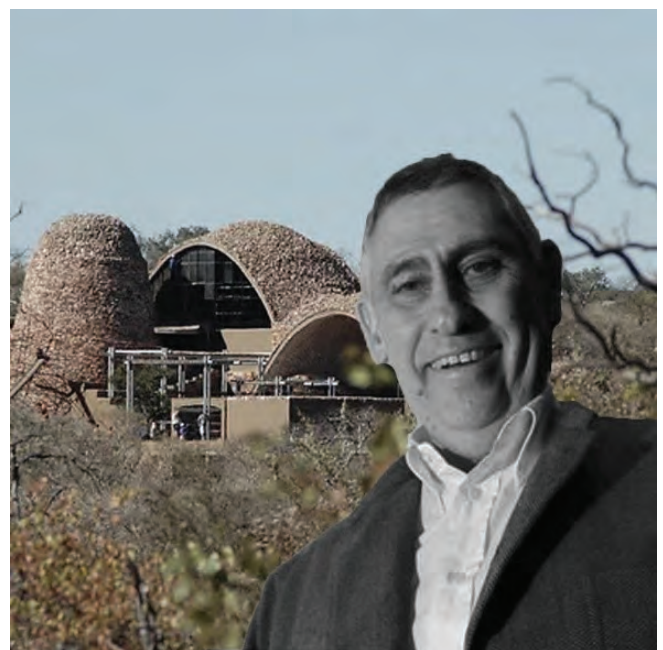
Meraki 2021 focused on the theme 'Architerra'. The guest speakers for last year comprised of Ar. Dean D'Cruz (Goa), Ar. Eric Corey Freed (United States), Ar. Eugene Pandala (Kerala) and Ar. Takaharu Tezuka (Japan). They provided an insight on their design philosophy and methodology.

This year Meraki 2022 presents to you 'Confluence'. Tiny streams emerging from various origins converge at a node and

Panel of Speakers for Meraki 2022:



Ar. Sunil Patil



Ar. Peter Rich

celebration of the essence of architecture and its intriguing perspectives.

In line with the above theme, the distinguished panel of guest speakers for Meraki 2022 comprises of Ar.Sunil Patil (Sunil Patil and Associates, Pune), Ar.Akshay Heranjal (The Purple Ink Studio, Hubli,Karnataka), Ar. Badrinath Kaleru (Studio Ardete, Chandigarh) and Ar. Peter Rich (Peter Rich Architects, Johannesburg, South Africa).

With this year's seminar we hope to inspire the young minds and mould them by learning from the experts. The diverse ideologies that all the speakers bring to the stage will resonate with us to conceive an architecture that is responsible and inspiring.

Date : Saturday, 17th September 2022

Time : 9:00 am-6:00 pm

Venue : Swatantrya Veer Savarkar

Registration fees : Students - Rs 400 /-

Professionals - Rs 800 /- ■

Article written by Ar. Nivedita Desai, Associate Professor, Dr. Baliram Hiray College of Architecture.



Ar. Akshay Heranjal



Ar. Badrinath Kaleru

take the shape of a colossal river. Likewise, when different ideologies and dreams unite, that same node becomes a meeting point for a network of varied and dynamic ideas. Assembling and integrating these notions is what we call Confluence. It is a harmony of ideals of distinct individuals from diverse cultures in Architecture. This dais is a source of

A 8000sq. ft. of garden estate nestled deep within the rich landscape of Punjab!

Text Credits- Ar. Harpreet Singh

Image Credits - Ar. Tushar Garg



Deep within the rich landscape of Punjab, an extravagant farmhouse rises from the still ground with a paradisiacal experience as “Baag-e-Fursat”. Much like the name, it is imagined as a garden estate that grows into staying areas and recreation points that enjoy the vistas all around the 8000 sq. ft. expanse of the place. It speaks of retreat

in the purest sense with lush-green lawns, pleasant-and-poised patio seats, intriguing indoor game areas and a striking swimming pool that elevates the experience in and around the accommodation.

The first impression of a visitor begins where their ride ends—a massive parking lot seals the end-to-end experience of



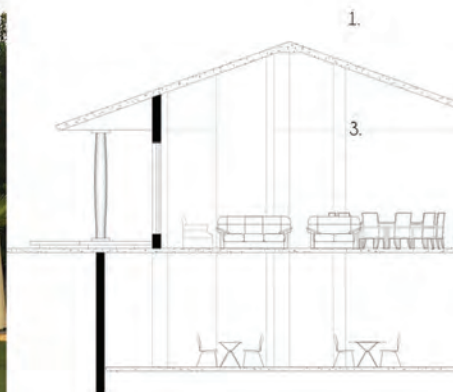
the farmhouse with towering walls and a tucked-away entrance that gives a small peek into the entirety of Baag-e-Fursat. Upon entering, one is surprised by the monumental impose of the setup that is acrophobic in one minute and completely breathtaking in the next.

As a tradition, the visitors are welcomed by a sign of wellness and fortune—A tree-high statue of Lord Buddha sits in the midst of pruned bushes that carry the nature-loving language ahead. The scenic lawn ambience is left untouched by walkways—stamp concrete paths, trellised seating islands, metallic garden sculptures and birdhouses run in silence, along the side.

The first of four cottages is dedicated

to recreation—the lounge and dining overlooking the infinity pool and its cascading sides give a tranquilising accent to the space. A sunken bar by the pool takes a deeper indulgence into the turquoise waters that gleam by the day and turn dramatic by the moon-lit night.

More drama awaits on the inside—an indoor gaming area in the basement gives a walk through the timeless games with pool tables, carrom tables and table-tennis zones etc., all wrapped around by walls carrying their symbols—chequered walls, pawn patterns, card collages and more make the space interesting for people of all ages.

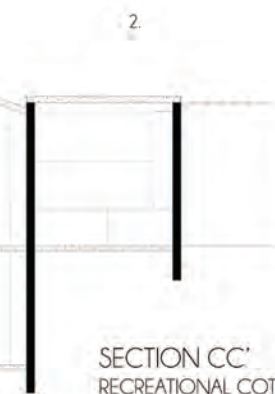




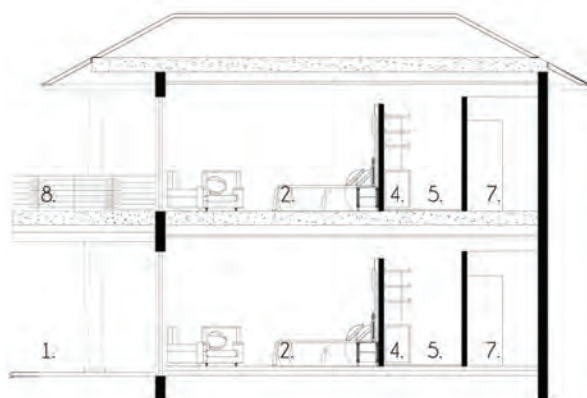
- | | |
|---------------------|--------------------|
| 1. DINING LOUNGE | 1. COMMON VERANDAH |
| 2. KITCHEN | 2. BEDROOM |
| 3. GAMES/ PLAY AREA | 3. CUPBOARD |
| 4. POWDER ROOM | 4. FRIDGE |
| 5. STAIRS | 5. DRESS |
| 6. UTILITY AREA | 6. SHOWER |
| | 7. W.C. |
| | 8. BALCONY |



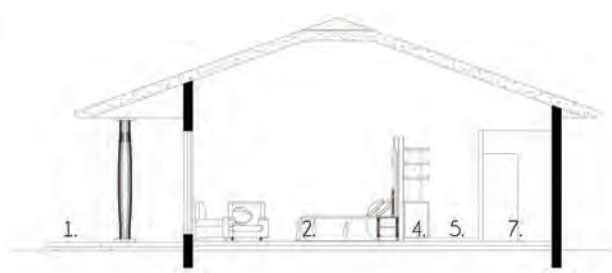
TYPICAL FLOOR PLAN
RESIDENTIAL COTTAGE



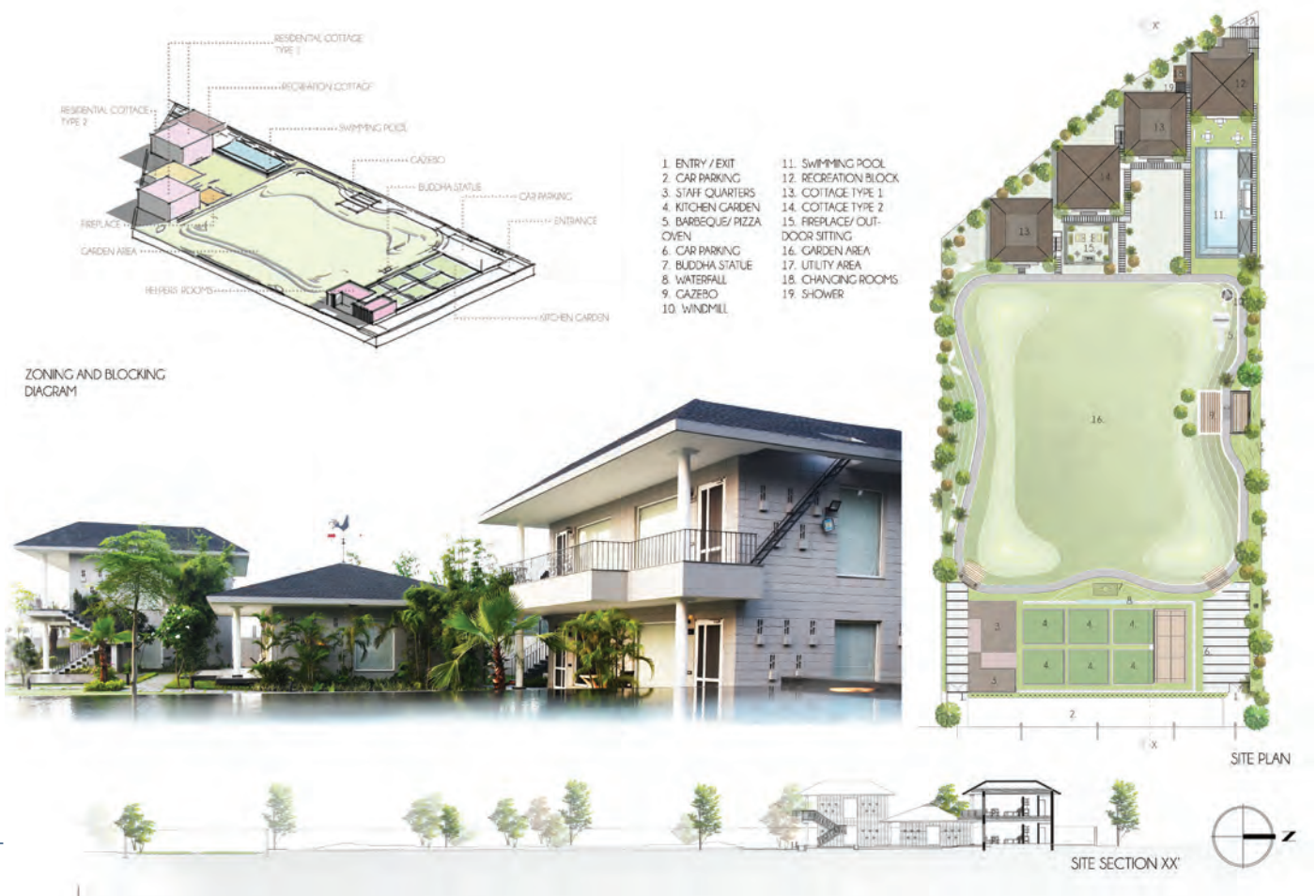
SECTION CC'
RECREATIONAL COTTAGE



SECTION AA'
RESIDENTIAL COTTAGE TYPE 1



SECTION AA'
RESIDENTIAL COTTAGE TYPE 1













Further ahead, the villa cottages spell the concept of wonders in the wild, by introducing garden nodes within an off-grid layout that luxuriates in ample sunlight and ventilation. Both upper and lower storeys grandstand a contemporary interior style with minimal furniture, geometric lights, lightwood hints and an overarching neutral palette. These rooms stay synonymous with the farmhouse concept by accommodating beds that wake up to the views lit by the east sun, along with the verandas that share the same.

On the whole, Baag-e-Fursat is a place to satiate one's senses with the lavish play of contemporary architecture along with a subtle throwback to the vintage styles. While the contemporary side of the design opens up opportunities for people to interact with expandable rooms, semi-enclosed

gazebos, makeshift party lawns etc.—the vintage hints bring back the nostalgia with a signature windmill, antiquated fans, trussed roofs, and handmade luminaires, woven matters and more.

As an experience, Baag-e-Fursat is a peaceful haven for families with people from different times and cities, brought together by nothing but an enthuse for a time away from humdrum life. ■

FACT FILE

Project	: Baag-e-Fursat
Location	: Kharar, Punjab, India
Architect	: Team: Ar. Harpreet Singh
Client	: Vista Stays
Project Area	: 6000 sq.ft.
Structural Engineer	: Rakhra Associates, Chandigarh
Wall Cladding	: Exposed concrete block from Dyanmic and UPVC glazing from Lingel.
Bathroom Fixtures	: Jaquar

'A Three-Villa Complex in Kuwait

Text and Images- Credits
GIJO PAUL GEORGE



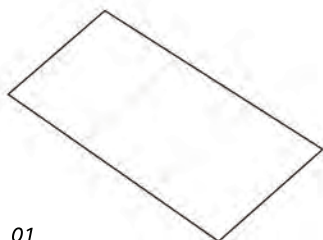
The Street Interface Of The Villas

Ternion is a composition of three independent villas in Kuwait. Variably stacked prismatic volumes create a porous-pixelated massing achieving a harmonious balance between the opposing ideals of privacy and community. The project encouraged the architects to rethink the modern suburban Arab residential block, usually populated with affluent independent villas. In a society where privacy and weather become the overriding design directives, the norm in residential

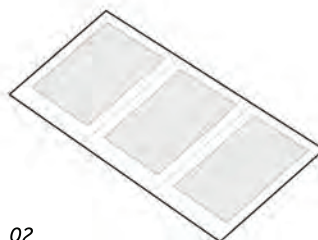
architecture is to create impenetrable and introverted structures that maximize the climate-controlled built-up area. The brief dictated the creation of three independent villas with private gardens and private swimming pools, that can be utilized on a year-round basis. This was particularly challenging since Kuwait is known for its arid desert climate which is one of the hottest in the world and dust storms are a regular occurrence.



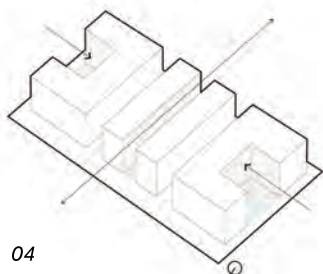
Projecting Volumes Creating Shaded Spaces



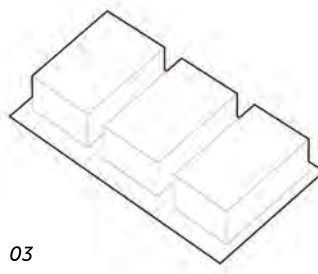
01



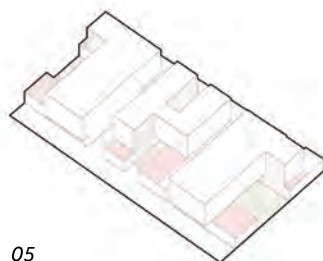
02



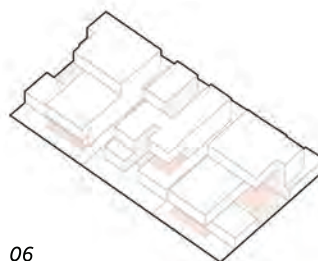
03



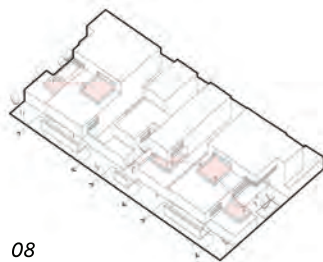
04



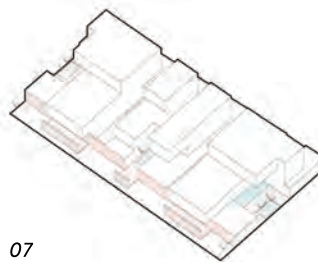
05



06



07



08

01. Site extents showing three adjacent plots

02. Allowed footprint of each plot with mandatory offsets

03. Maximum buildable volume

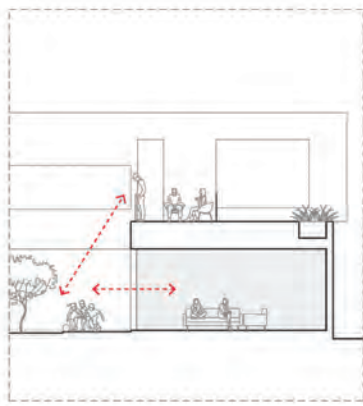
04. Volumes are sculpted to carve out private open spaces creating shaded areas and privacy along the cardinal directions

05. The massing is further modulated to accommodate the programme and to create usable terraces

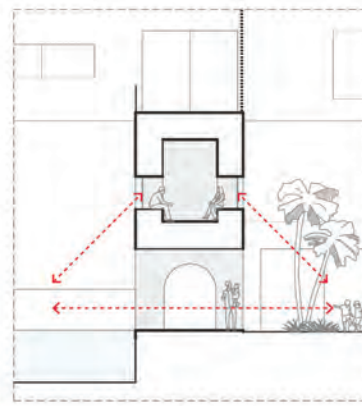
06. Strategic cantilevers employed to create shaded porticos and vantage points

07. The volumes reach out to each other creating a streamlined street-interface, thereby forging a unified identity for the development. A hierarchical series of open courtyards and landscape pockets emphasises the porosity of the massing

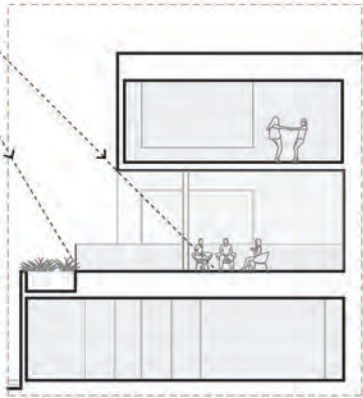
08. A series of secondary social spaces are created in the form of shaded and open terraces, visually connecting the different zones of the development and contributing towards a sense of community



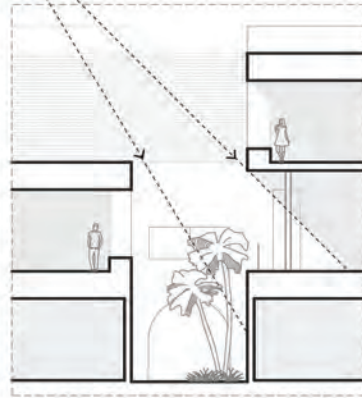
11.a



11.b



12.a



12.b



13.a



13.b

Visually connected social spaces at different levels;

11.a Courtyard and terrace are organised allowing visual connectivity

11.b Bridge doubles up as a social meeting space, connecting various spaces of the house both physically and visually.

Self shading strategies;

12.a Overhanging building mass create shaded social spaces

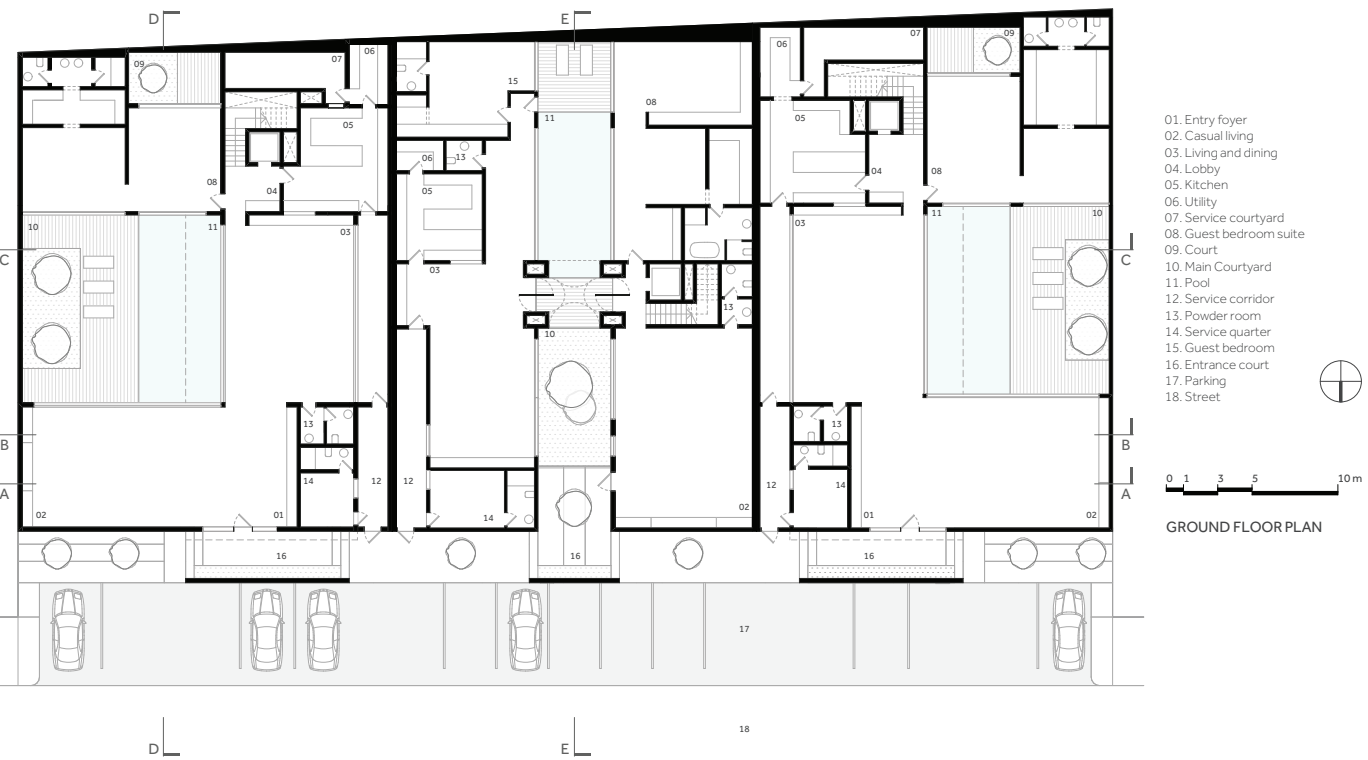
12.b Self shading strategies achieved by recessed windows and overhanging building masses.

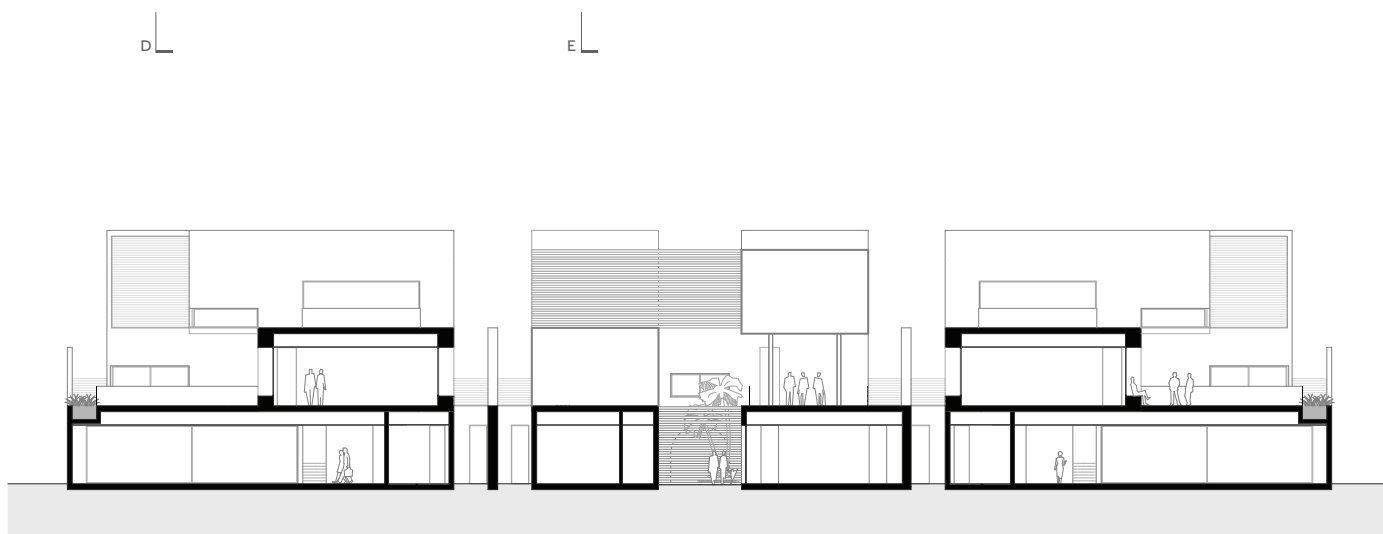
Passing cooling techniques and cross ventilation;

13.a Courtyard and swimming pool facilitate evaporative cooling and cross ventilation.

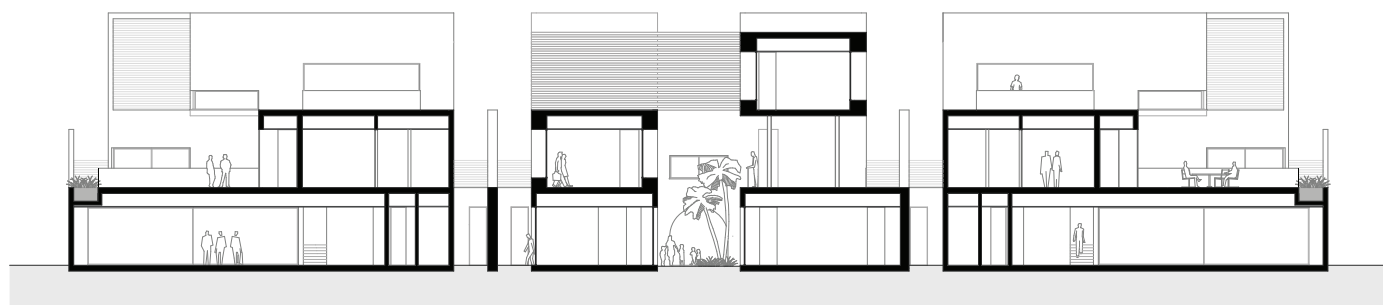
Self shading strategies, the upper storeys act as sun shades for the spaces below.

13.b Private open spaces bring in light into the spaces and help in circulating the air that is subjected to evaporative cooling by the swimming pool.





Section AA



Section BB



Hidden Entry Points



View From The Street

JUNE-JULY-AUGUST 2022



Terrace Spaces For Views And Social Interaction

While it could not be completely avoided, the architects sought to minimize the use of active climate control by employing passive cooling techniques traditionally part of the vernacular. Combining these with self-shading massing strategies gave the project the direction it needed both spatially and aesthetically. Each villa is centered on a private courtyard featuring a swimming pool as a modern functional interpretation of a traditional 'Hosh' with a water feature. The social spaces are grouped around this pool

and feature longitudinal full-height glazed windows facilitating cross ventilation and evaporative cooling when open.

The glazed internal walls afford panoramic views to the garden and pools while shaded from the scorching sun by cantilevered volumes mitigating the heat gain. This results in a composition of variably stacked prismatic volumes creating a pixelated/porous massing that endeavors to achieve a harmonious balance between the opposing ideals of privacy and community.



28

Private Spill-Over Spaces

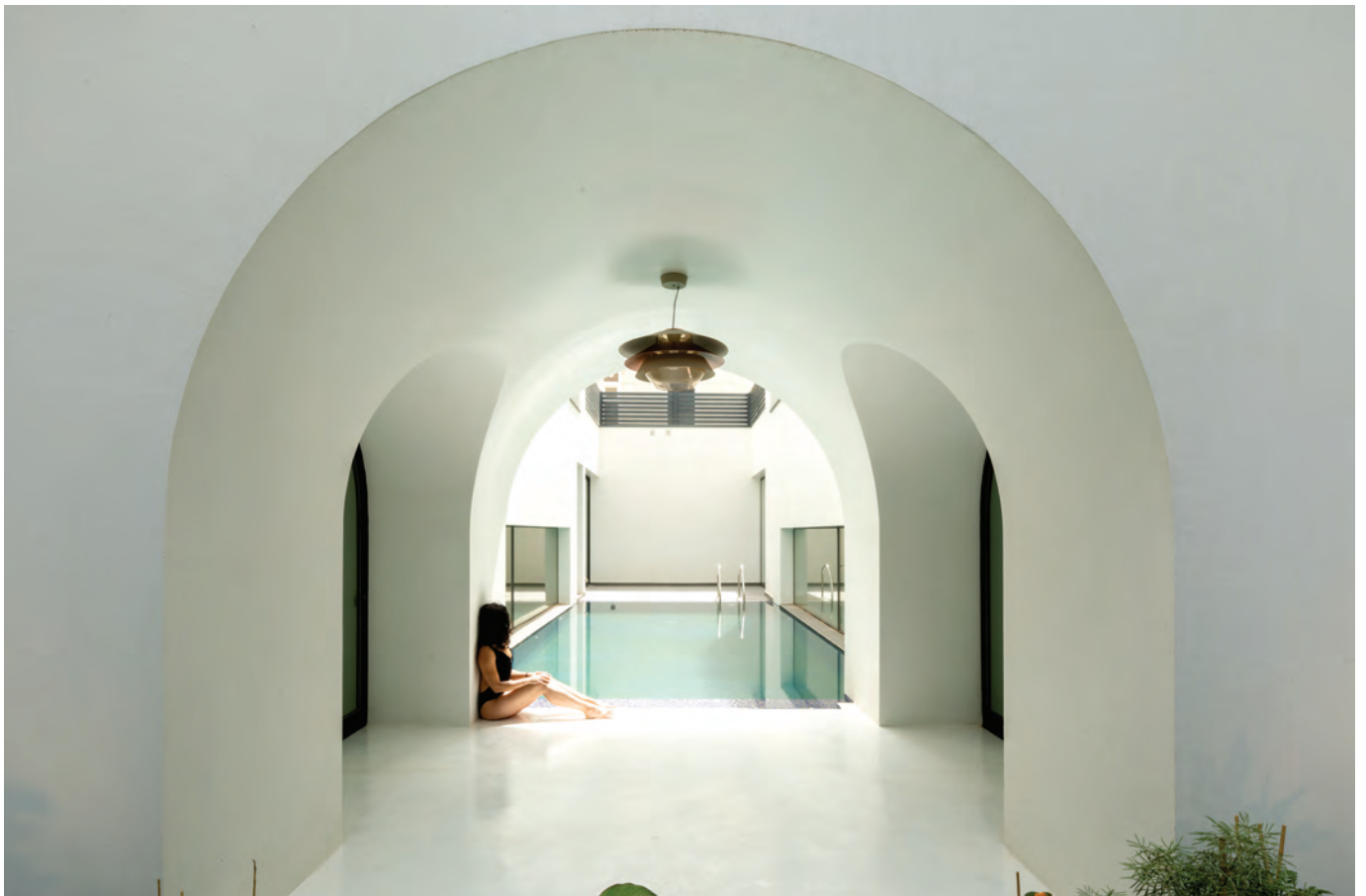


Overlooking Balconies Connect Between The Floors

JUNE-JULY-AUGUST 2022



Pool As A Water Body Helps In Passive Cooling



Vaulted Access To One Of The Pools



The Masses Creating Visual Frames

The architecture of the three villas is to be read as a whole, composed of a series of hierarchical social spaces, organized based on their varying degrees of openness and privacy. These range from fully enclosed, private, and silent gardens to vast terraces, opening up to the streetscape and the vistas beyond. The inhabitable volumes are organized around these social spaces, defined by their function and need for

transparency. These monolithic volumes, by virtue of their compositions, act as frames, shields or cantilevers, providing shade from the sun, protection from the desert wind, and frames the endless views towards the sea from multiple vantage points. Usable terraces, covered porticos, hidden nooks, viewing platforms are all part of a selection of multi-use spaces generated by modulating the massing. The



expressive volumes of the three villas reach out to each other creating a streamlined street interface, thereby forging a unified identity for the development. Ternion, thus, is an experiment in modern Arabic residential architecture, that respects the privacy and exclusivity dictated by the social norms without compromising on the joys of community. ■

FACT FILE

Project	: Ternion Villas
Location	: Al Bidaa. Kuwait
Architect	: Studio Toggle
Team	: Hend Almatrouk, Gijo Paul George Abdul Rashid, Dionne Pereira, Indu Balaram Mani Kuruvilla, Ashlon Frank
Client	: Mohammad Abdulrahman Abdulmoghni
Project Area	: 2840sqm
Structural Engineer	: Al Turath Consultants
Civil Contractors	: Eksaat Construction Company
Project Estimate	: 3.3 Million Usd
Initiation Of Project	: 2017
Completion Of Project	: 2020

Creating healthcare Spaces for Children

Text Credits: Neo Clinic

Photo Credits: Maulik Patel / Inclined Studio & Varun Patel / Varun Patel Photography



32

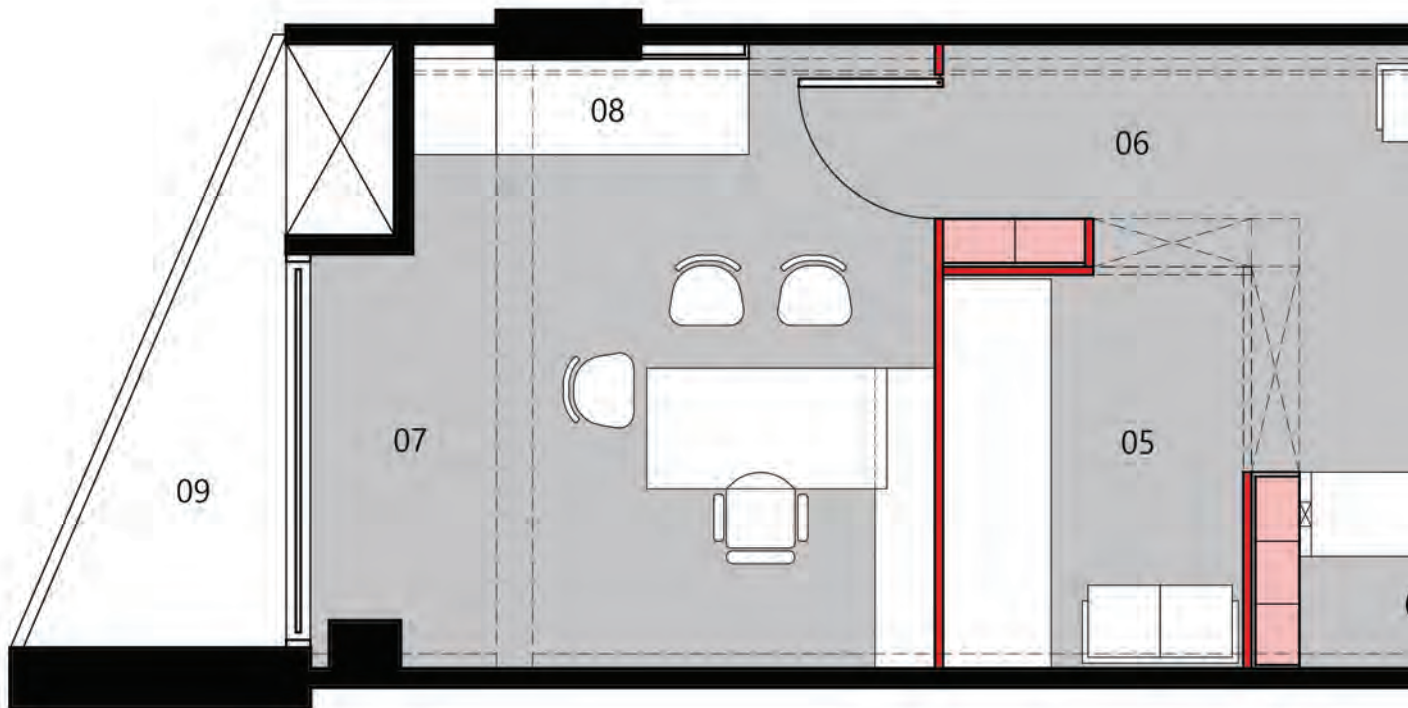
The project was to design a Children's clinic. The requirements were to create a reception, waiting area, Doctor's consultation room and a day care space with a single bed and seating space for the care taker.

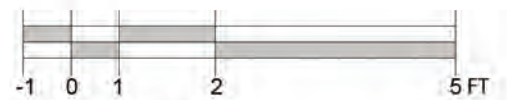
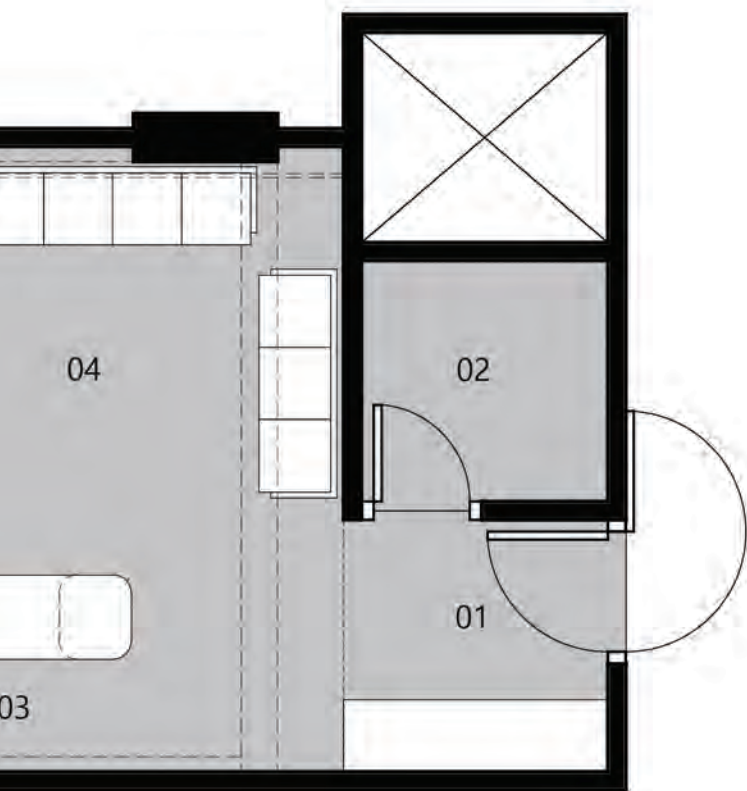
The architect team went for an open plan concept. Partitions were used as envelopes to define spaces. Partitions could be moved, as and when required.

The space is being used by the kids. The objective was to make it playful, easy and fun to be, as Doctor's clinic are generally intimidating for children. The children who generally come to visit the Doctor are unwell. The space was planned to be warm and to make children feel comfortable, secure and happy.

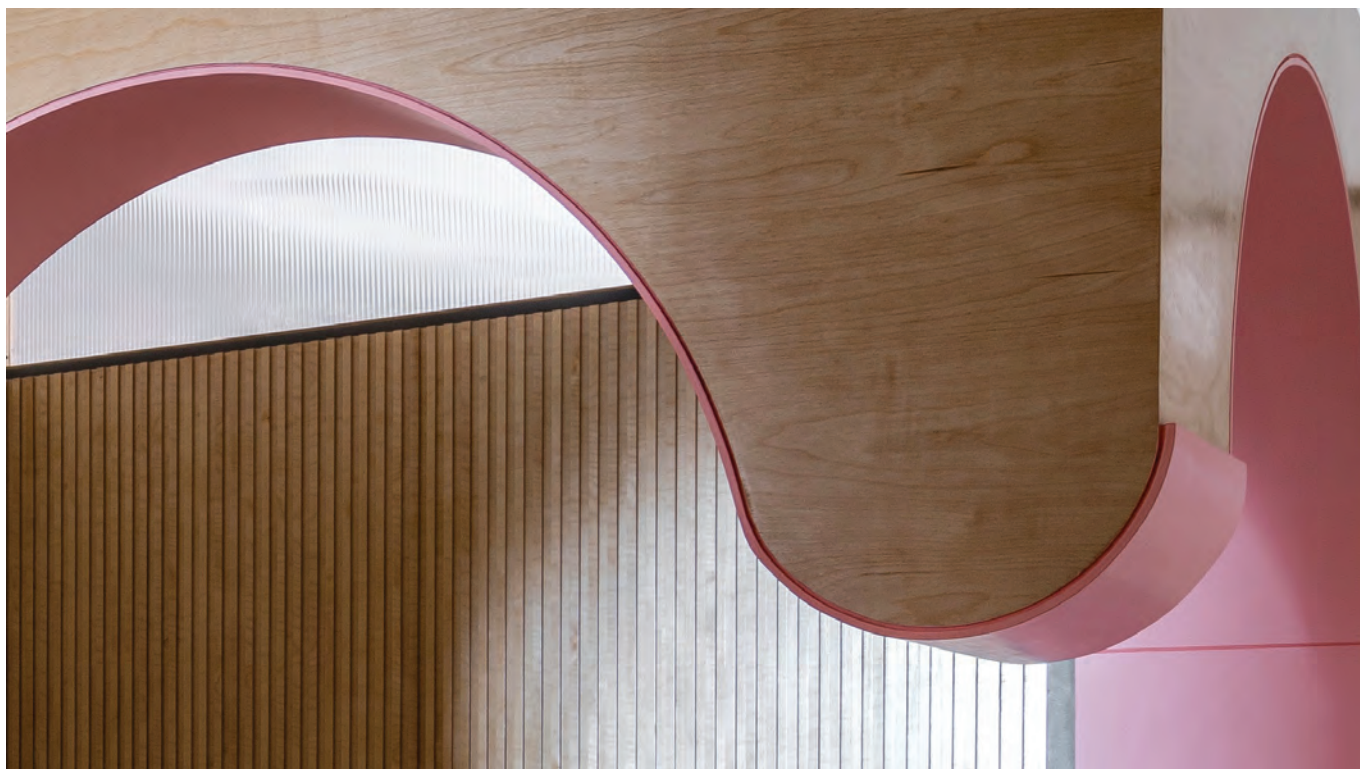
The Clinic is divided into two main spaces –







- 01 ENTRY
- 02 TOILET
- 03 RECEPTION AREA
- 04 WAITING AREA
- 05 DAYCARE/ WAITING AREA
- 06 PASSAGE
- 07 CONSULTING ROOM
- 08 RECOVERY BED
- 09 BALCONY







one is Doctor's consultation area and other one – that combines reception, waiting and the day care space. For the later space, it is designed as an envelope to separate out the day care area. The envelope is designed with two adjacent curves. The corners at which the two curves meet is also made round, to create a smooth and easy curvilinear form. The entire width of

the curve is painted in pastel tone to create a playfulness in the space. The day care area when in use, can be separated through Glass sliders. The same space becomes an extension of the waiting area, during other times.

Materials used were in Natural tone. Birch ply was used for envelopes in its natural tone. The envelopes were designed with

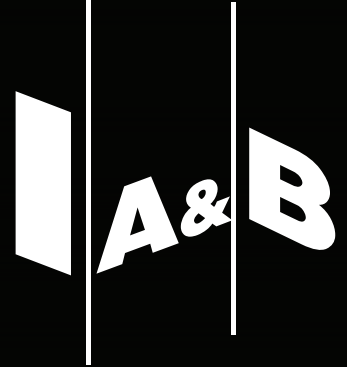


strips of Birch ply. This gave a rhythmic effect to the space. Dual tone polish was used on the Birch surface. Pastel tones of pink and grey were also used. These pastel tones complemented each other to create a warm and playful space for children to be there and be comfortable with their parents. ■

FACT FILE

Project	: Neo Clinic
Location	: Ahmedabad
Architect Team:	
Lead Architect	: Krishnakant Parmar, Vipuja Parmar
Project Architect	: Parth Mistry
Intern	: Unnati Gandhi
Client	: Dr. Mitesh Kakkad
Project Area	: 40 m2
Initiation of Project	: July 2021
Completion of Project	: August 2021

Connect, Engage & Collaborate with **>75,000**
architects & interior designers
with **IAB DIGITAL**



connect

art, architecture, design
professionals & students

reach

more than
75,000 architects & interior designers

explore

new avenues for reaching
the target audience

engage

brand awareness & expand
customer portfolio

customize

new avenues for
business leads

