

INTERIORS

Villa No. 46, Crafted Spaces

ARCHITECTURE

Design Ni Dukaan's Extension, Design Ni Dukaan

The Yellow Box, TRAANSPEACE

VS House, Saransh



ANNOUNCING

361°



# STORIES OF INSPIRATION

4<sup>TH</sup> & 5<sup>TH</sup> DECEMBER, 2020



ANNOUNCING

361°



Video Link <https://youtu.be/dHahMjoL69Y>

Register now



[www.iabforum.com](http://www.iabforum.com)

Know more



[enquiries361@jasubhai.com](mailto:enquiries361@jasubhai.com)

ORGANIZED BY







# DOES HEAT BELOW YOUR ROOF CAUSE STRESS TO YOUR EMPLOYEES ?

## INSTALL HINDALCO EVERLAST ALUMINIUM ROOFING SHEETS

Hindalco Everlast Roofing Sheets make complete business sense:

- Moderate temperature below the roof
- Do not rust, needing no maintenance
- Good resale value vis-à-vis other roofing materials
- A quality product from Hindalco - the world leader in aluminium rolled products



NETWORK HEI031 19

For more information, please call: 1800-103-9494. E-mail: [hindalco.everlast@adityabirla.com](mailto:hindalco.everlast@adityabirla.com) | [www.hindalcoeverlast.com](http://www.hindalcoeverlast.com)



INDIAN ARCHITECT AND BUILDER

CHAIRMAN

Maulik Jasubhai Shah

PUBLISHER & CEO

Hemant K. Shetty

DEPUTY EDITOR

Sujatha Vishnuraj

SUB-EDITOR

Shriti Das

CREATIVES

Arun Parab

GENERAL MANAGER SALES

Amit Bhalerao

Prashant Koshti

BRAND MANAGER

Sudhanshu Nagar

SALES

Godfrey Lobo

Priyaranjan Singh

Chandrabhas M Amin

Yonack Pradeep

Sunil Kulkarni

Harshad Gaikwad

Indian Architect & Builder: (ISSN 0971-5509), RNI No 46976/87, is a monthly publication. Reproduction in any manner, in whole or part, in English or any other language is strictly prohibited. We welcome articles, but do not accept responsibility for contributions lost in the mail.

JASUBHAI MEDIA PVT. LTD.

Registered Office: 26, Maker Chambers VI, 2<sup>nd</sup> Floor, Nariman Point, Mumbai 400 021, INDIA. Tel.: 022-4037 3737

Fax: 022-2287 0502, E-mail: sales@jasubhai.com

PUBLISHED BY:



5 Industry News

INTERIORS

12 A melange of curation and craft

Villa No. 46 by Crafted Spaces is the quintessential Indian home that amalgamates craft, colour and light with a mix of traditional and contemporary aesthetics with a focus on processes, techniques and behind-the-scenes details and the spirit of collaboration that go into the making and execution of such work.

ARCHITECTURE

20 The circle of life within 450 sq. Ft

Design Ni Dukaan's Extension is the newer addition to Veeram Shah's Ahmedabad-based practice that responds to the conventional functions of an architect's studio – a place to create, evolve and collaborate with a focus on art, literature, philosophy, cultural contribution.

32 Spice, soiree and subtlety

The Yellow Box by TRAANSPOACE is an office designed for a client engaged in the wholesale spice business. It borrows its concept from the significance of spice in India – its colours, flavours and relevance in the past and present.

40 Annotating aesthetics

VS House by Saransh is a 7-year old house in the outskirts of Ahmedabad that was revamped into its current avatar with a minimal aesthetic that generates a powerful, visual, spatial and tactile experience for its user.

Cover: ©Crafted Spaces



## CenturyPly Announces Application of Virokill Technology in its Manufacturing Process Killing 99.99% Virus, with the Launch of New TVC

A one-of-its-kind initiative in wood panel industry



Video Link: <https://youtu.be/gFWNGNAxvR0>

Century Plyboards (India) Ltd., India's one of the largest manufacturer of plywood and decorative, had been relentlessly working throughout the lockdown period and has come out as a pioneering solution in the wood panel industry. The brand has announced the use of nano technology in manufacturing of its plywood and laminate products. The highly activated and energized Nanoparticles physically rupture and kill viruses coming in contact with it. This has been tested and certified under Antiviral Efficacy Test as per ISO 21702:2019 international standard, by Biotech Testing Services (BTS) Mumbai. The certification declares an efficiency of 99.99% in killing viruses. The nanoparticles are effective throughout the lifetime of furniture as those are embedded in the polymer matrix system. Currently CenturyPly is using Virokill technology in manufacturing of Architect ply, Architect plus, Club prime/710 plus, Bond 710/

Pro710, WIN MR, IS:710 Marine for plywood range, Club Prime, Bond 710, Win MR for Block boards, Century Laminates (1 mm), Natural Veneer (Natzura woods) and entire teak range.

Commenting on the launch, Mr Keshav Bhajanka, Executive Director, CenturyPly said, "Since February, during the onset of Covid pandemic in our country, we have been trying to provide a solution to our consumers to make them feel safe at their own homes. I am glad that our technology has been certified to offer to our customers, laminates and ply that kills 99.99% virus it comes in contact with. The addition of technology adds another feather to the already existing expertise of CenturyPly as a provider of innovative solutions in home decorative space. ■

For more details visit [www.centuryply.com/virokillbycentury](http://www.centuryply.com/virokillbycentury).



# Taiwan wows India with Green Building innovation

Visit the Wow Taiwan website today!



Lighting Systems



Video Link: [https://youtu.be/64uW1HI\\_1tk](https://youtu.be/64uW1HI_1tk)

6

Water  
Purification &  
pumping



Video Link: <https://youtu.be/HV2ut80vvwM>

Taiwan is a technology powerhouse in the green building segment. Starting October 2020, 15 Taiwanese companies showcase their innovative products that not only helps customers save time, money and effort, but also contribute to betterment of the environment and quality of life on the planet.

SEPTEMBER 2020





**Chen Yi, Sun**  
Secretary General, Taiwan Green Building Council

**Energy saving  
materials &  
solutions**



Video Link: [https://youtu.be/OBX8rsG0\\_hY](https://youtu.be/OBX8rsG0_hY)

## **Air Purification & Circulation**



**Chen Yi, Sun**  
Secretary General, Taiwan Green Building Council



Video Link: <https://youtu.be/4YkjLHsL9No>

The innovative products are in the areas of (i) Air purification & circulation (ii) Water purification and pumping (iii) lighting systems and (iv) Energy saving materials and solutions.

For more information, visit our website- <https://rb.gy/gpmh2u>

Contact Information - Tony Lee, CDRI E: [tonylee@cdri.org.tw](mailto:tonylee@cdri.org.tw)

# L&T completes Divestment of the Electrical & Automation Business to Schneider Electric

This strategic divestment is in line with L&T's stated goal of unlocking value for future growth

Larsen & Toubro (L&T), India's leading engineering, technology, construction and financial services conglomerate, today announced the closure of the strategic divestment of its Electrical & Automation (L&T E&A) business to Schneider Electric, a global player in energy management and automation.

The significant and complex divestment deal, one of its kind in India announced in May 2018 has been completed after receiving the requisite regulatory approvals and fulfilment of necessary conditions. The divestment is in line with L&T's stated goal of unlocking value for future growth. L&T continuously evaluates its business portfolio and takes capital allocation decisions from a long-term perspective. Its exit from the Electrical & Automation Business is a part of the strategic portfolio review process.

Commenting on the closure of this divestment, Mr. A.M. Naik, Group Chairman, Larsen & Toubro said: "The closure of divestment of the E&A business is a key milestone in our stated long-term strategy. The challenge was to carve out a business of this scale, with minimum disruption to the sprawling customer base and do it all amid the constraints of a pandemic. We believe Schneider Electric is the right partner to grow the business, that L&T had nurtured and grown over decades. We truly

believe that this deal with Schneider Electric is a win-win for our employees, business partners, and shareholders."

Mr. S. N. Subrahmanyam, CEO & MD, Larsen & Toubro said: "This all-cash deal will help us create a much stronger balance sheet, thereby creating long-term value opportunities for our stakeholders by focusing on key aspects of business. The deal was a complex M&A transaction involving slump sale of the domestic business and share purchase transfer. This is in sync with our strategy to look at L&T in broadly three areas, EPC Construction & Projects, Manufacturing & Defence and Services." ■

*Media Contacts: Yuvraj Mehta, Head, Corporate Brand Management & Communications, [Yuvraj.mehta@larsentoubro.com](mailto:Yuvraj.mehta@larsentoubro.com) / +91 85888 88272*

*Ketan Bondre, Head, Media Relations, [ketan.bondre@larsentoubro.com](mailto:ketan.bondre@larsentoubro.com) / +9198205 36572*



## **SICC INDIA WELCOMES ITS NEW PRESIDENT ABUBAKER KOYA, MANAGING DIRECTOR, GEBERIT INDIA**



At a virtual event on 25th September, 2020 – “Change in leadership – Handing over the Reins”, Mr. Abubaker Koya, Managing Director, Geberit India took over the reins as President of Swiss Indian Chamber of Commerce India. He takes over Dr. Shravan Subramanyam, who has relinquished his post after serving as president for over two years.

Mr. Koya has also been on the SICC - South

Executive Committee since 2014 and held the post of President SICC-South Chapter for two consecutive terms.

We congratulate and wish Mr. Koya the very best for this new assignment.” ■

# Product Innovations 2021: SCHOCK Focuses on Sustainability and Premium Quality



In coining the term SINK GREEN, the innovative manufacturer of quartz composite sinks and supplier of high-grade mixer taps not only gives its longstanding drive for sustainability a name but at the same time makes plain its ambition to usher all of its processes and products into a sustainable future. This has resulted in a world first, the CRISTADUR® Green Line, a premium sink material consisting of over 99% natural, renewable or recycled raw materials, which redefines the concept of sustainability in the sink market. But SCHOCK would not be SCHOCK if there weren't also lots of new product innovations: sink models, mixer taps, accessories and new colours to emphasise the COL OUR YOUR LIFE claim.

The most sustainable material: CRISTADUR® Green Line

The CRISTADUR® Green Line is the most sustainable quartz composite sink ever made by SCHOCK. With natural quartz sand being the main constituent in the product, quartz composite sinks are already produced in harmony with nature and the environment. The CRISTADUR® Green Line is the sink for all those who want an even more sustainable product. The models in the CRISTADUR®

Green Line series consist of >99% natural, renewable or recycled raw materials. And that's not all: the sink can be returned to SCHOCK at the end of its life to go into the company's closed cycle, where it will be reused in the

production of new sinks without any loss of quality. This option is available in the German market initially.

The CRISTADUR® Green Line is naturally manufactured with all the premium quality features inherent in CRISTADUR® and is being launched in two different colours: Night and Day. Back in 2013, SCHOCK already unveiled its blackest black in the form of Puro - a true shade of jet black. Now the innovation leader is taking it one step further with the new colours Day and Night. Night embodies a truly intense graphite black, while Day offers the sharpest possible contrast: the whitest of pure whites that SCHOCK has ever made. ■

*SCHOCK GmbH*

*Hofbauerstrasse 1, 94209 Regen, Germany*

*Phone +49 (0) 9921-600-0, fax +49 (0) 9921-600-253*

*Mail: [info@schock.de](mailto:info@schock.de) Internet: [www.schock.de](http://www.schock.de)*

*Facebook: [www.facebook.com/SchockGermany](https://www.facebook.com/SchockGermany)*



## Shaw Contract Introduces the Shifting Fields Collection

The place where land, sky, water, and horizon meet is always shifting.



Video Link: <https://youtu.be/0FjQDgeF08U>

Shaw Contract introduces Shifting Fields. It is a collection that reflects the changing nature of our landscapes, and captures our need to adapt gracefully and design for ever-shifting environments. The collection provides a biophilic flooring solution that helps define space by creating transitions, zoning, visual cues and boundaries.

Each tile in the collection is a design experience. It is inspired by earth and stone, by horizon lines of land and water, by transitions between grasslands and forests, by the organic structure of overlapping vegetation.

Made with the sustainable and healthy EcoWorx® backing, Shifting Fields is designed with circularity in mind; a rigorous framework for environmental and social responsibility to positively impact people and our planet.

The Shifting Fields collection comes in two sizes: 18"x36" and 9"x36" tiles. Styles include Enclave, Landing, Landing Edge, Plains and Vista tiles. It is designed to leverage different patterns, styles and sizes to fit different zones, while improving spatial definition. ■

*For more details on the Shifting Fields Collection visit [shawcontract.com](http://shawcontract.com)*

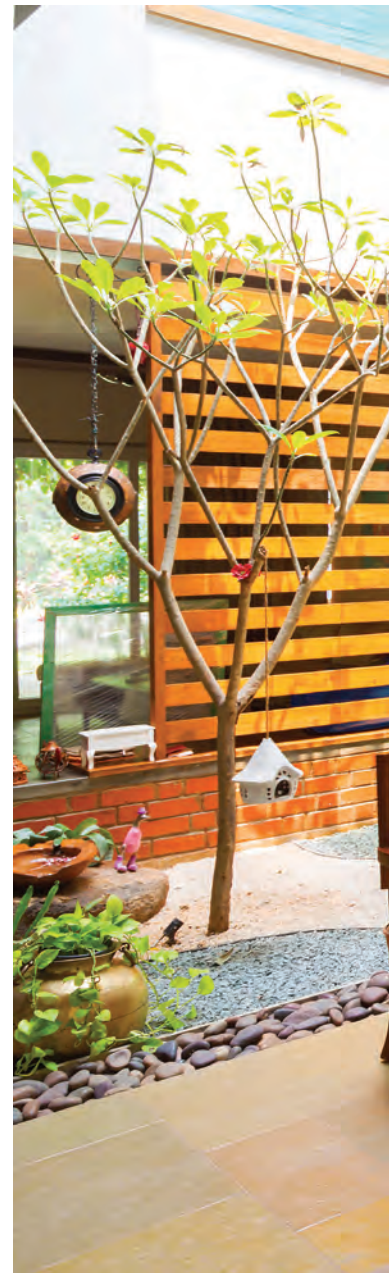
# A melange of curation and craft

Villa No. 46, Hyderabad, Telangana

12 Villa No. 46 is the quintessential Indian home that amalgamates craft, colour and light with a mix of traditional and contemporary aesthetics. Crafted Spaces curated the eclectic mix of aesthetics and decor from across the country in collaboration with artists, craftsmen and various brands. The house is everything that a home aspires to be – warm, cosy, comfortable, inviting and amicable. The family aspired a modern and easy home but creating a haven for a family with adult children is often a challenge. Each individual has distinct preferences, tastes and dislikes that may not work in tandem with one another. Villa No. 46 interweaved these disparate elements seamlessly into a cohesive whole with bespoke details and tailored spaces.

*Text: Shriti Das*

*Images: Sankeerth Jonnada*







The house is part of a gated community that Crafted Spaces acquired in its shell form and proceeded to devise the home as it stands today. While the house is created with artistic flair, it also illustrates exceptional restraint and application of craft that is relevant to contemporary

times. But often, well-executed projects are explored in their totality and processes and details that join forces during making perhaps take a backstage. The following article investigates processes, techniques and behind-the-scenes details that go into the making and execution of such work.











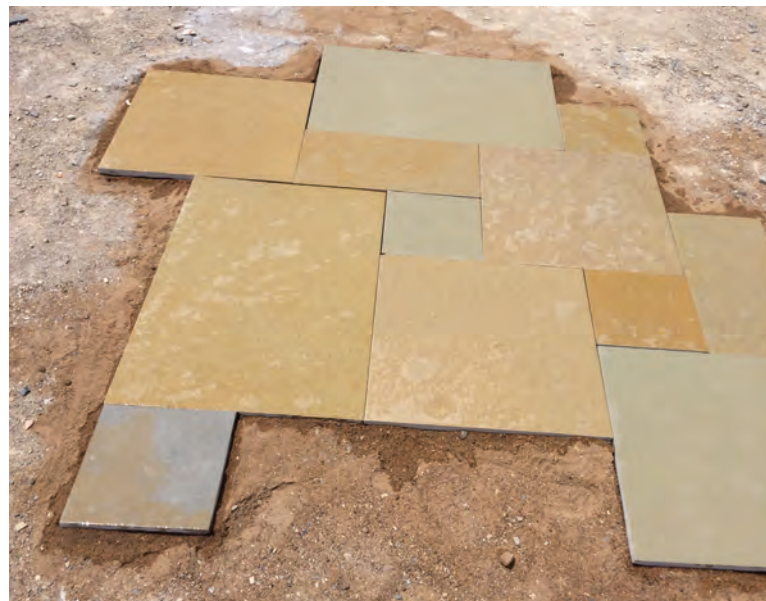


The Tander flooring in the living room and courtyard.

## The courtyard: Tander flooring | Feature wall by Redwinz | Indoor landscape

The courtyard is perhaps the villa's most striking feature that divides the formal and informal living. "The Double height wall in the formal seating area was conceptualised to be a piece of art itself, a lot of experimentation and exchange of ideas with an artist led to this visually striking yet subtle wall feature."

The Tander flooring was the starting point



The Tander flooring being laid out.









Son's bedroom.

of design as it set the tone for the space and also imparted a neutral and earthy backdrop to the courtyard. The stone is locally available in Telangana, at a 2 hours drive from Hyderabad. The designers and clients chose the stone and subsequently devised a grid-pattern with yellow and grey Tandır in sizes of 1'x1', 1'x2', 2'x2' and 3'x2'.

### **Double-heighted wall – Mohan, Redwinz**

Mohan of Redwinz collaborated with the architects to create the artwork on the double-heighted courtyard wall. The

Redwinz team core team consists of 5 artists who began their studio with wall art and graffiti. They gradually undertook metal sculptures, fiber sculptures, digital art, furniture design, MDF cuts on wall to create accent wall, different wall textures, etc. The courtyard wall is a work of art that is clad with 12mm MDF panels that are laser-cut and hand-painted. The wall is an interesting mix of technology and craft wherein the design is developed on CorelDRAW and exported onto artCAM. artCAM is linked to a Computer numerical control (CNC) machine that cuts the MDF panels. The entire process took 7 days and the artists hand-painted the panels with acrylic colours before cladding.

### **Son's Room: Oxide flooring, Muthulingam, VKT Building Construction, Auroville | Venetian plaster by Supersurfaces**

Breaking away from the colourful revelries in the living room and the courtyard, the son's bedroom is garbed in a sophisticated palette of greys. The son desired a monochromatic room and the greys are enhanced with the use of textures on the wall and grey oxide flooring. The wall finish is achieved by virtue of Venetian plaster, also known as polished plaster by Supersurfaces. They impart a rugged yet chic finish to walls akin to marble, metal or stone. They find application across surfaces; be it brick walls, MDF, veneer, gypsum board or plywood.



Complementing the Venetian walls is the grey oxide flooring, a method that found use in traditional homes. It remains relevant to current times given that it imparts a seamless finish that is unachievable with stone, tiles, wood or most floor finishes. The oxide flooring was undertaken by Muthulingam of VKT Building Construction in Auroville. A mix of white cement, marble powder (white marble aggregate) and pigmented oxide powder in a ratio of 7:3:1 is applied onto a finished surface. The mixture must be as thin as 1-2mm when applied on walls or floor. Thicker application may cause the surface to develop cracks. This is followed by a curing period of 10 days. Wax polish is applied for maintenance and its aesthetics appreciate with ageing.

The greys are offset by a wooden headboard for a spurt of colour and texture. The house is a composition in neutrals and mellow tones tied together by artful and colourful accents. Decor accessories play a huge role to tie together any space. The furniture is customised by Fatima of IK Designs wherein the architects and clients paid regular visits to Fatima's factory to keep track of the progress of their furniture. The curtains and blinds were sourced from Mulberry. Items such as the monks on the stairs and some of the landscaping, quilts, bedspreads, cushions, table linen, runners, and other knick-knacks were sourced from Eucalyptus Home store. They also specialise in dyeing and printing. However, a major chunk of the decor was sourced

from Autumn Leaf Home Studio who specialise in traditional furniture and home accessories. Their pieces are often refurbished or up-cycled to fit a modern home, making them sustainable in the long run. They employ craftsmen and artisans, generating revenue opportunities for communities and contributing in the conservation of craft.

Any project, beyond addressing function and client requirement is also an opportunity to drive resources, power and privilege into the correct channels and even enable social betterment. While it is unfair to expect every practice to partake in such undertaking, given that most who do undertake experimentation with craft do it at the cost of their own time and often, at their individual monetary expense. Yet, when such collaborations take place, they culminate into works like these; that are cherished for their processes as well as their final outcomes.

#### FACT FILE

Project name	: Villa No.46
Location	: Ektha Prime Villas, Financial District, Nanakramguda, Hyderabad
Date of completion	: April 2019
Area	: 6000 sq. ft.; G+2
Photographer	: Sankeerth Jonnada
Client name	: Mahesh Reddy and Sabitha Reddy

# The circle of life within 450 sq. Ft.

Design Ni Dukaan's Extension, Ahmedabad

- 20 Design Ni Dukaan's Extension was created in continuation to their existing studio in Ahmedabad. While it was the logical 'next-step' to the campus consisting of a design studio and garden, the Extension is also diametrically contrary to the high-end projects that Design Ni Dukaan has undertaken. It was bound by stringent budgets and timelines. Another paradox lies in the fact that the Extension transpired organically but was conceived and executed in a rigorously detailed manner to complete work in less than 3 months during monsoons. Yet, a common thread binds the Extension to Design Ni Dukaan's Campus and their works at large. It is the ethos and principles - of designing in totality sans distinction where creating transpires as a collaboration between the designer and the artisan, between the intellectual and the craftsmen.

*Text: Shriti Das  
Images: Ishita Sitwala  
Drawings: Design Ni Dukaan*





The Design Ni Dukaan Extension is the newer addition to Veeram's Ahmedabad-based practice.

Video Link: [https://youtu.be/zjkYxL\\_VGgA](https://youtu.be/zjkYxL_VGgA)

The Design Ni Dukaan Extension is the newer addition to Veeram's Ahmedabad-based practice. The campus originally comprised of a studio and a garden with a gazebo. It responded to the conventional functions of an architect's studio – a place to create, evolve and collaborate with a focus on art, literature, philosophy, cultural contribution. It adapted a non-office structure that was devoid of walls metaphorically and literally. There were no hierarchies of designation or labels of gender, religion and politics. "A place where people meet and create, destroy, live, love, disintegrate and leave behind experiences which help this space

grow. It was a place where you are judged only by your abilities and your drive to be better the next day."

The studio and the garden with the gazebo perhaps imbibed a holistic mix of play and practice. The Extension was a response to the burgeoning functions that the studio was undertaking as people across India worked and lived within it. "Desks became beds, sometimes even chairs were enough." The Extension, as the name implies, is an extension of their space and a manifestation of how their community has evolved and grown. With time, the studio acknowledges that creators and those with creative inclinations don't





require corporate structures but an enriching life where knowledge is spread seamlessly. "A space to think, a space for conversation, a space for meetings, a space to even cook, and eat together and rest."

Design Ni Dukaan's design language is one that is immersed in processes and finds beauty in details, nature and mindful use of material. Their projects encompass a wide spectrum: of product design to architecture. Their aesthetic sensibility leans towards natural palettes and materials like brass, wood, stone, concrete, IPS etc. that age with flair and character. "We work with a base material and add layers of complexity

with complementary materials in a subtle specificity. The iterations of details that emerge become potent." The Extension is a culmination of these entities in a literal as well as allegorical manner.

Design Ni Dukaan extended the space from a ramshackled old servant quarters to build a temporary structure but with finesse on a stringent budget. The design program included a lounge that seated three people, a personal desk, bathroom with a shower, pantry, a comfortable daybed, and walls for art in 450 sq. ft. The studio detailed every element and devised a hierarchy of the construction system.





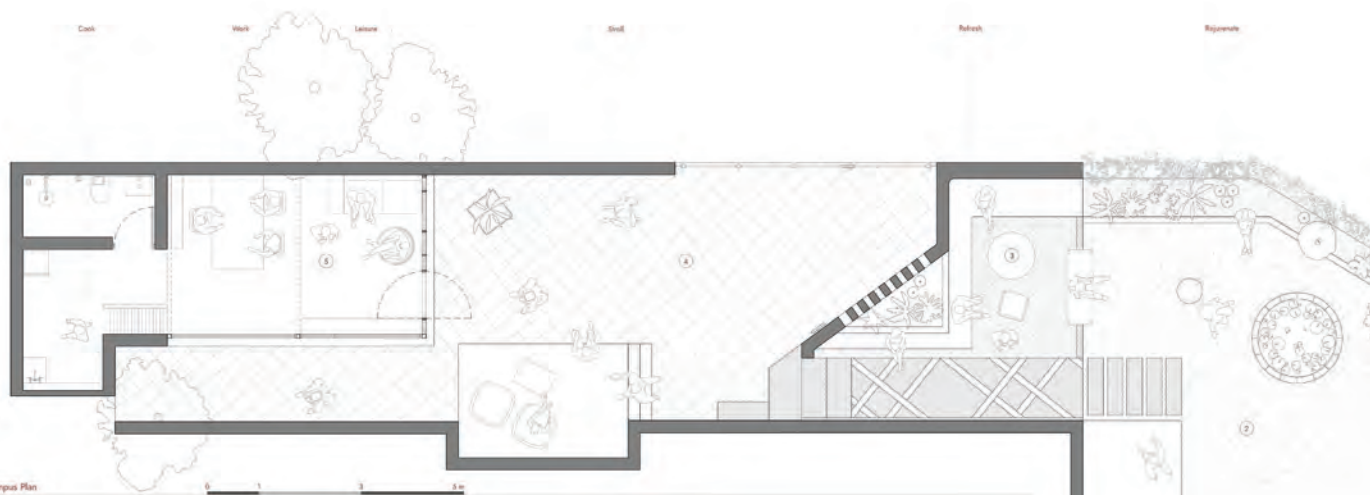
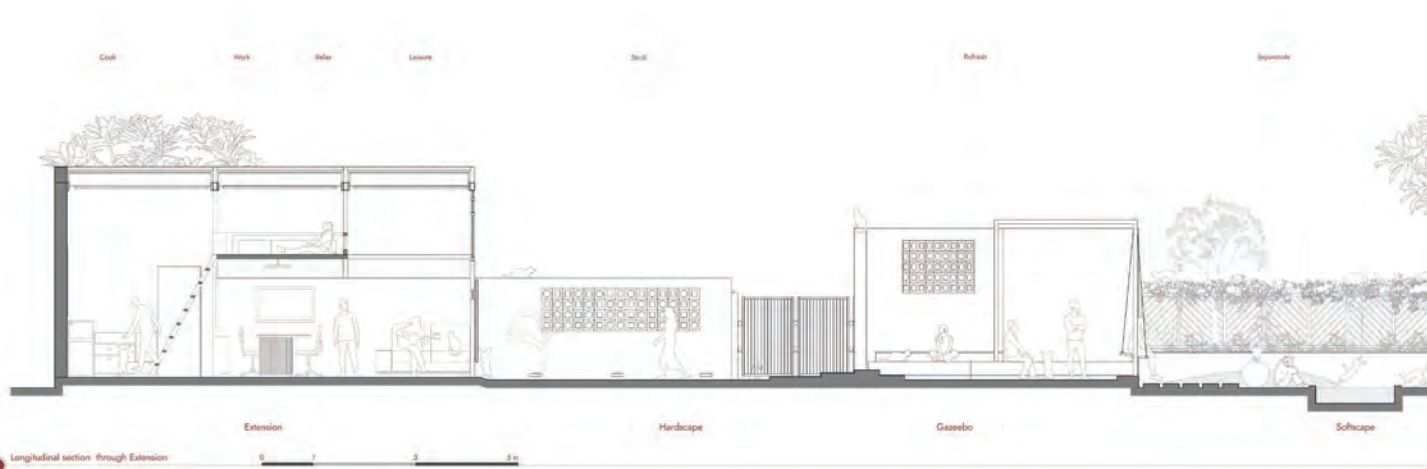
A place where people meet and create, destroy, live, love, disintegrate and leave behind experiences which help this space grow. It was a place where you are judged only by your abilities and your drive to be better the next day.











Does your workspace inspire you to create?  
 Does she soak in the music you listen to? And hum it back when you need it?  
 Do the walls remind you of the people she has cradled?  
 The books that have stirred your soul?  
 The unforgettable films that have changed your life?  
 That bittersweet melancholy of being a better designer  
 everyday and the stress that this field comes with?  
 Do the forms and materials express your passions,  
 frustrations and joys?  
 Does the furniture remind you of meaningful and also  
 mundane conversations?  
 Does the light come in like long lost memories?  
 Nostalgia that leaves a smile you can't recreate.  
 Does she cradle you like a child and help you face the  
 inevitable odds of following your art?

A space to think, a space for conversation, a space for meetings, a space to even cook, and eat together and rest.  
 A space that would complete the sense of community that we had evolved.





Design Nt Dukan Studio  
Softscape  
Gazebos  
Hardscapes  
Extension to the studio



0 1 2 3 4 5 m

*Eat - Rest - Think - Converse - Work - Relax - Rejuvenate*

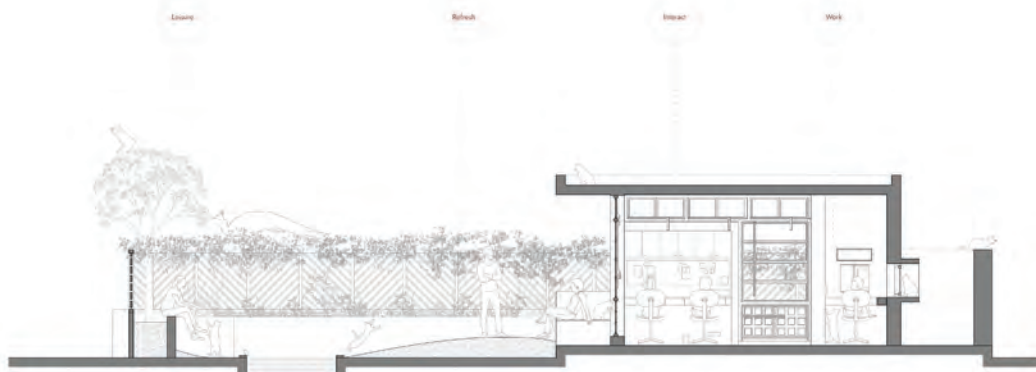
*Why shouldn't work be a complete circle of life?*



Extension

Lateral section through Extension

0 1 2 3 4 5 m



Softscape

Studio

Lateral section through Studio

0 1 2 3 4 5 m



75mm x 75mm MS sections form the skeleton of the structure. To maintain the the height alongside the compound wall, inclined sections were used to connect the mezzanine and the main frame. This created a backrest for the mezzanine. The main light for the desk was designed to accentuate the eccentric detail. The angle of the roof also accommodates light fixtures. A curved sheet overlaps the junction onto which the light is fixed. Being adjunct by a busy street and a boundary wall, natural light makes way into the Extension through sky-lights and strategically placed glazing.

- 28 In a way, the Extension is contrary to the kind of projects that Design Ni Dukaan has worked on. They work on high-end spaces and the Extension was bound by time, costs and space constraints. "We had initial fears that it might end up looking like a "shed", but throughout the process, we realized that temporary structures in low costs could also be dealt with a certain grace." It is of essence that the space is holistic, aesthetic and "visually wholesome" as the architects call it. Which makes one question, if limitations restricts creativity or gives wings to new ways of seeing and practicing? The idea of practice is of essence here.

Practice, as opposed to work, translates to the application of ideas, processes, technique and knowledge to generate















systems and ways of working. Practice is perhaps a poetic annotation while work is simply, work. Poetry becomes imperative when the practice pertains to creation. And the space that harbours this undertaking is sacred. For architects, designers and vocations that engage in 'making' their space transpires as an extension of their ethos. While it is common knowledge that space influences and has considerable stimuli over its inhabitants; for designers their studios are also often a canvas that mirrors their vision, showcases proficiencies, skills and design aspirations. The Extension brings together these entities like meticulously crafted pieces that fall in place by virtue of what Design Ni Dukaan's practice has imbibed within its practitioners.

#### FACT FILE

---

Project	: Design Ni Dukaan Studio-Extension
Location	: Ahmedabad
Architect	: Ar. Veeram Shah
Design team	: Rohan Shroff, Silvey, Aishwarya, Gautam, Shajita, Taniya
Client	: Ar. Veeram Shah
Project Area	: Extension area - 450 sq. Ft
Photographer	: Ishita Sitwala
Structural Engineer	: NA
Civil contractors	: Pravinbhai Patel and team
Carpentry contractors	: Thanaram Mistry and team
Electrical contractors	: Electrotrance
Project Estimate	: 8 Lakhs
Initiation of Project	: July, 2018
Completion of project	: October, 2018



# Spice, soiree and subtlety

THE YELLOW BOX, Vadodara, Gujarat

32

The Yellow Box by TRAANSPLACE is an office designed for a client engaged in the wholesale spice business. The primary challenge involved accommodating a reception area, small display area, few cabins and workstations, a conference area, pantry and a toilet in a tight area of 450 Sq. Ft. From fitting a highly functional office in a tight space to weaving an innately Indian aesthetic that echoes a contemporary design language, THE YELLOW BOX ticks all the right boxes.

*Text: Shriti Das  
Drawings: TRAANSPLACE  
Images: Tejas Shah Photography*



## INSPIRATION

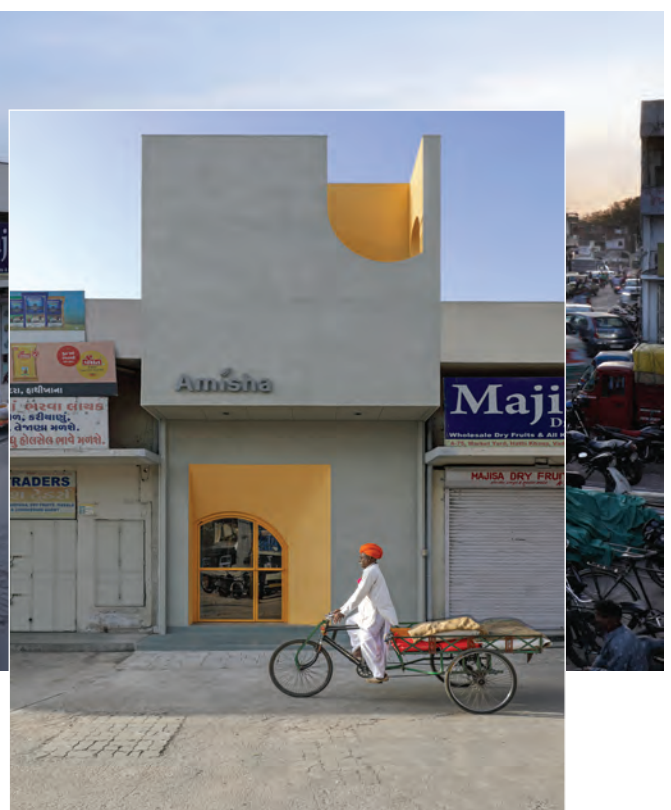
Designed for a spice wholesaler, TRAANSPACE derived a concept that reflected the significance of spice in India – its colours, flavours and relevance in the past and present. Spice is perhaps the quintessential Asian and Indian entity that has created waves across the globe since time immemorial. From being a commodity to a currency; to wars being waged for spice to colonising states; the Indian Subcontinent's identity is often linked to spice amongst other annotations of culture, literature and art. Hence, while designing an office for a wholesale spice retailer, captivating the 'Indianness' with a focus on history and current times was imperative. The colour yellow from spice, material palette of grey lime plaster and wooden wicker furniture created the overarching backdrop with arches being adopted from historic architectural contexts.



Before



After





## CONTEXT & PROGRAM

The site is situated in a densely woven grocery market in Vadodara. It has an area of 450 sq. ft. with shops on three sides.

The road-facing wall transpired as the sole source of daylight. The office also had to maintain a common terrace with its neighbouring shops. The spatial design called for an introverted demeanour which was also connected to its precinct with a facade that blended in yet retained its individual identity.

The client wanted to shift his operations from a typical market store to a new office that leaned towards being a workplace rather than a retail outlet. It was to be functional and a paradigm that represents the brand. The office mandated a reception, small display area, few cabins and workstations, a conference area, pantry and a toilet within 450 Sq. Ft.

34



## DESIGN: BOLD & MINIMAL

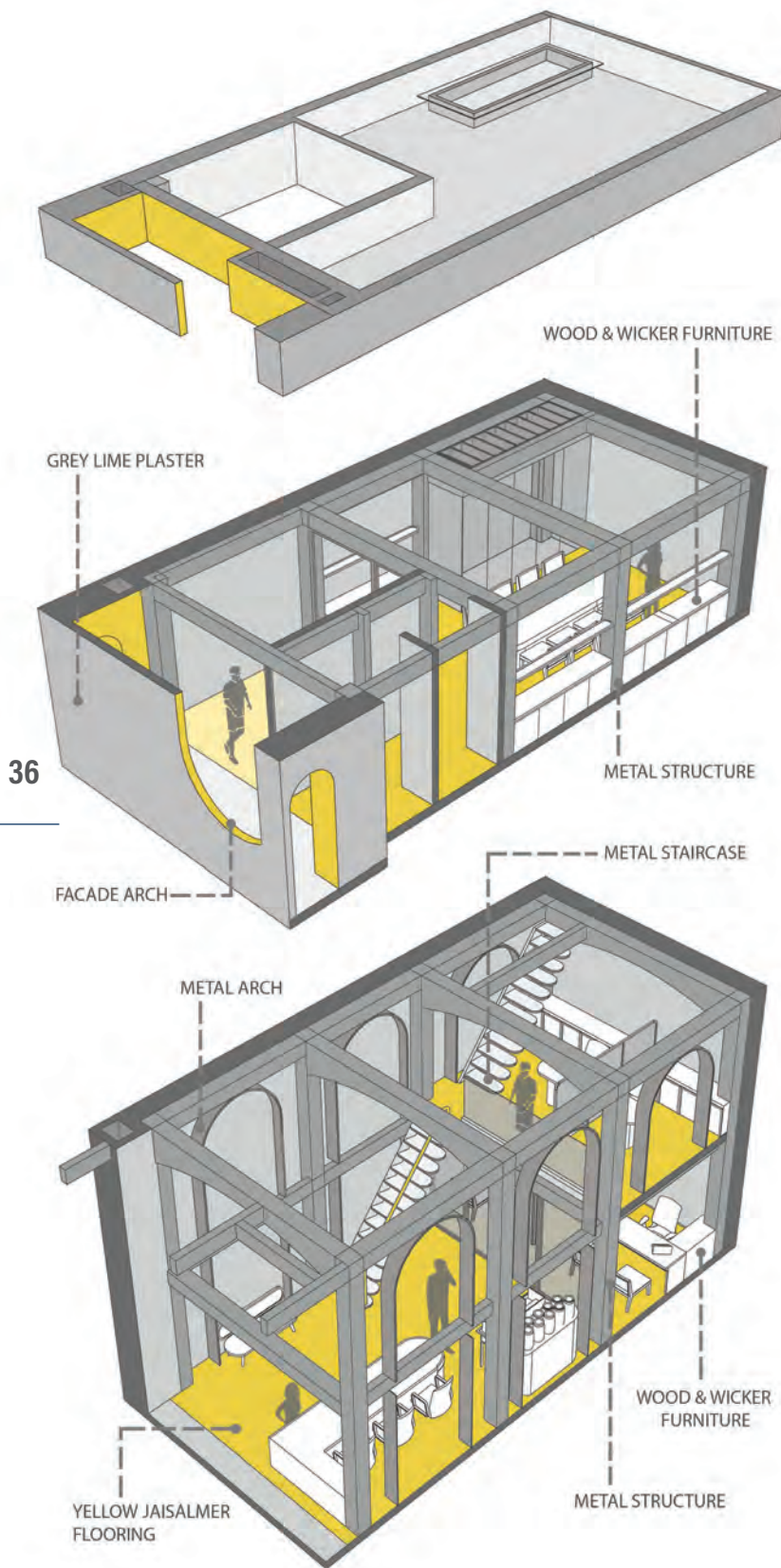
The site is situated in a densely woven grocery market in Vadodara. It has an area of 450 sq. ft. with shops on three sides. The road-facing wall transpired as the sole source of daylight. The office also had to maintain a common terrace with its

Form: A rectangular mass that is punctuated with diametrically opposite arches and openings providing relief to the 'box-like' shell.

Colours and texture: A restrained palette of exposed grey lime plaster provides a subdued backdrop to the pops of yellow. Yellow is used to highlight the entrance, the arches and on the internal staircase handrail, perhaps a metaphor to using spice with restraint, tact and proficiency.







## SPATIAL ORIENTATION: LOWER LEVEL + MEZZANINE + TERRACE

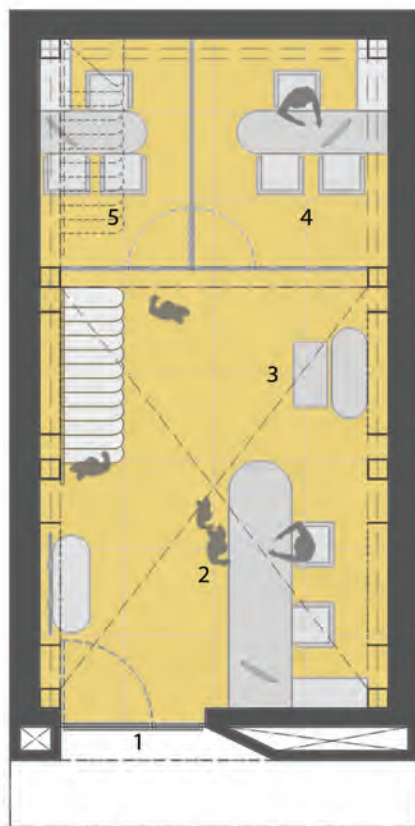
**Layout:** A double-height space with a mezzanine.

**Lower level:** Reception, display area and the director's cabins.

**Mezzanine:** Accounts and marketing desks.

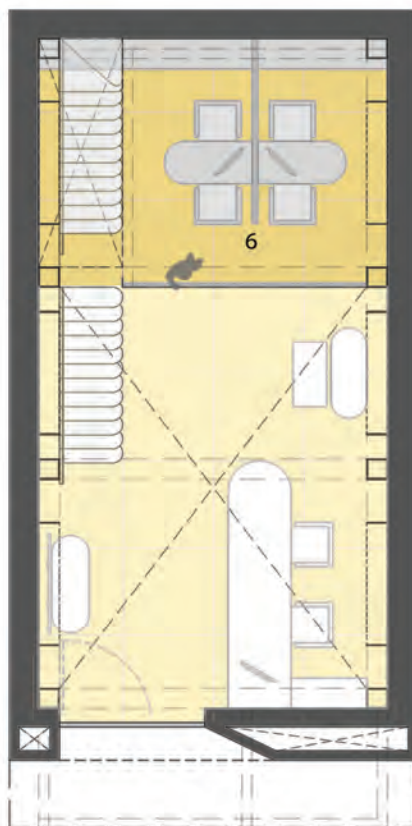
**Additional floor:** Conference, pantry and toilet which further open into a walled terrace that is open to the sky. This level and space also connects the shared-terraces of the neighbouring shops.

ISOMETRIC VIEW



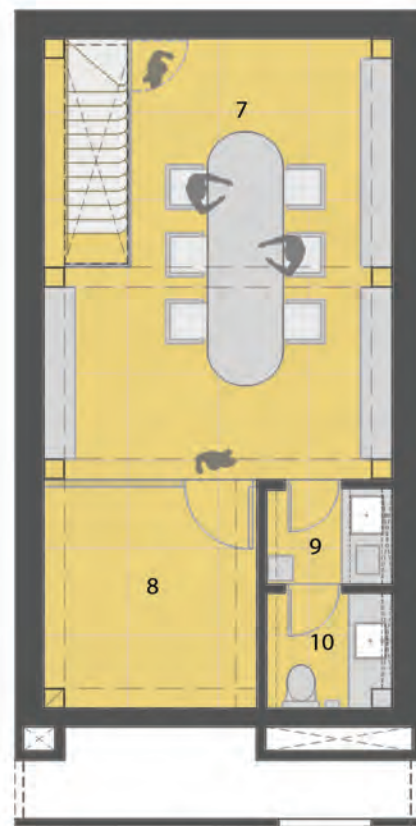
GROUND FLOOR PLAN

- 1 Entry
- 6 Work stations



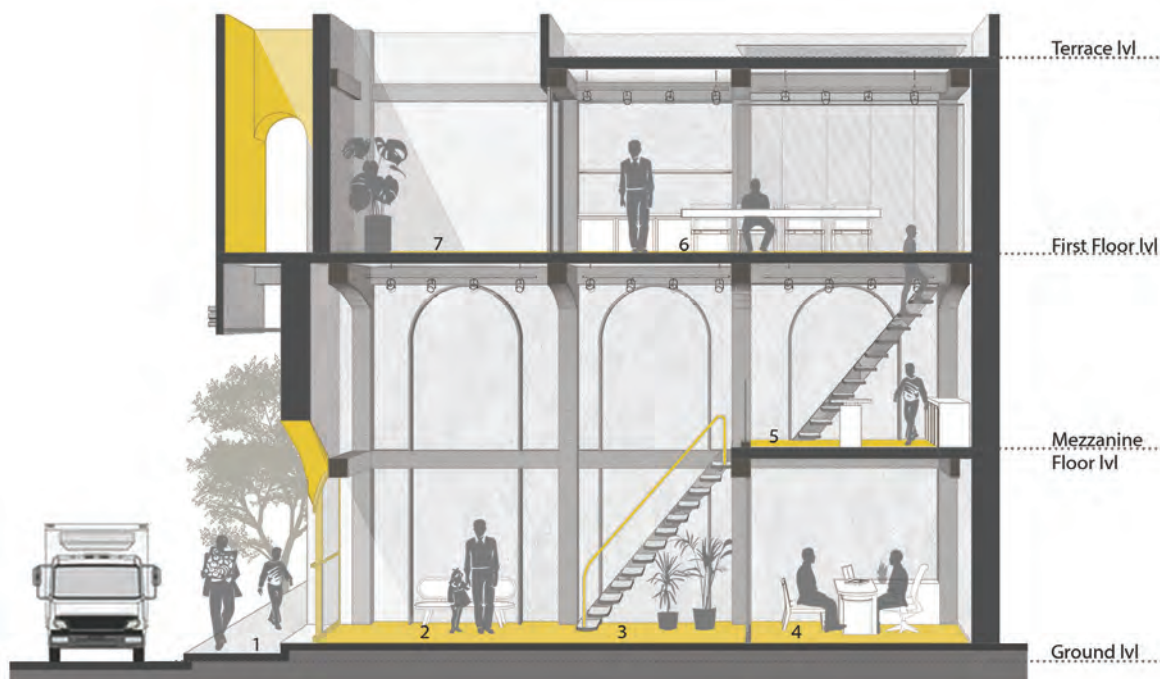
MEZZANINE FLOOR PLAN

- 2 Reception
- 7 Conference Area



FIRST FLOOR PLAN

- 4 Main Cabin
- 5 Son's Cabin
- 9 Pantry
- 10 Toilet



SECTION

- 1 Entry
- 2 Reception
- 3 Display
- 4 Main Cabin
- 5 Mezzanine
- 6 Conference Area
- 7 Terrace



## DETAILS AND MATERIALS

Structural system: Wastage of space was prevented by creating metal arches that merged with necessary metal structural members. The cantilevered metal staircase is a minimal yet artistic that allows the vision to travel unhindered despite its presence.

Material: Timeless wood and with a hint of wicker adds an Indian character complemented by the arches. All furniture was designed and crafted individually for the office. The floor is finished in yellow Jaisalmer to mirror the pops of yellow in the office.





Play of light: Light unfolds differently at different levels. The lower level draws light from the front north opening, mezzanine from the skylight and the upper level from the walled terrace.

THE YELLOW BOX holds its own on a crowded market street with playful yellow and arches that is balanced by rectangular geometry and the grey-lime plaster. The building creates intrigue as the user is welcomed into a space that amasses enormous volumes yet is of human scale owing to the mezzanine. The use of indoor planters, play of natural light and spatial qualities of the arches intermingle creating the right mix of all things Indian: spice, subtlety and soiree. ■

#### FACT FILE

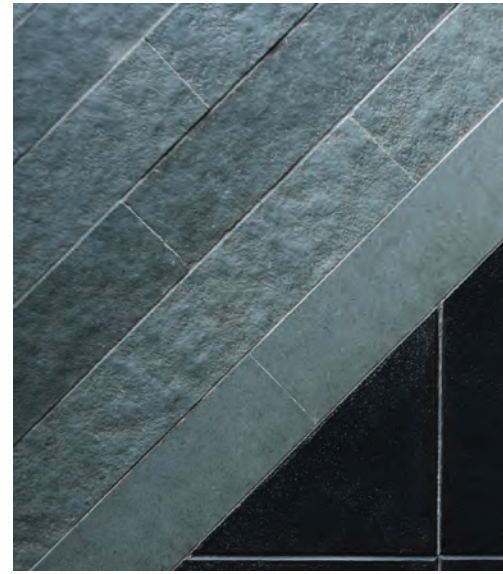
Name	: THE YELLOW BOX
Genre	: Commercial
Location	: Vadodara, India
Plot Area	: 450 sq. ft.
Total Built-up Area	: 1050 sq. ft.
Year of Completion	: 2019
Architect	: TRAANSPLACE
Principal Architect	: Urvi Shah
Client	: Dipak Shah, Amisha Masala
Photographer	: Tejas Shah Photography
Site Engineer	: Nimesh Panchal
Structure Consultant	: Hitesh Vora, Vyom Consultant



# Annotating aesthetics

VS House, Ahmedabad, Gujarat

VS House by Saransh is a 7-year old house that was revamped into its current avatar. Situated in the outskirts of Ahmedabad the minimal aesthetic generates a powerful, visual, spatial and tactile experience for its user. It aptly metaphors 'aesthetics' as an entity that engages the sensory to its hilt. It is achieved with natural materials like leather-finished granite, polished Kota stone, Kadappa, fire-brick on the floors against lime-finished walls and wooden furniture.



40

*Text: Shriti Das*

*Images: The Fishy Project*

*Drawings: Saransh*

**A**esthetic is largely perceived as a visual indicator or entity. However the accurate annotation of aesthetic is an experience wherein ones senses are at their peak. It is the opposite of anaesthetic; a state that numbs all sensation. VS House in the outskirts of Ahmedabad by Saransh is a 7-year old house that was revamped into a 3-bedroom home.

The original building was retrofitted to meet new requirements by adding and extending spaces. The house is minimal yet generates a powerful experience that is visual, spatial and tactile. It aptly metaphors 'aesthetics' as an entity that engages the sensory to its hilt. The palette is largely monochromatic. It is achieved with natural materials like leather-finished







The dining area.



granite, polished Kota stone, Kadappa, fire-brick on the floors with lime-finished walls and wooden furniture. But the key element is the attention to detail to achieve a tactile experience for the user.

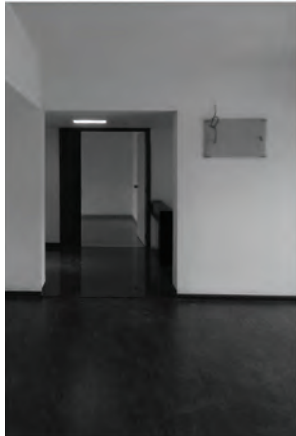
Saransh finds its muse in floors to create the aesthetic that is visual and tactile. The success of most architecture and decor projects are commonly gauged by colour, composition, illumination, play of proportions, spatial qualities, and so on. But Saransh elevates this experience with keen attention to textures and tactility. While space is viewed and experienced by the sight; tactility pertains to touch. And the floors maintain constant connect with its users. Leather finished granite and mirror polished grey Kota stone is used to create intricate patterns on the floor. The spaces in turn, are left monochromatic. The same materials are used to create

linear strips in transition spaces, herringbone patterns in the formal living space and as solid surface sans patterns in the informal areas. Wood-inlays are used in the bedrooms. Leather-finished black kadappa is placed in a diagonal manner in the dining area. The same stone is used in the private lounge. The courtyard uses fired-bricks. Coloured Indian stone is used in bathrooms to create intricate patterns as well.

VS House follows a minimal scheme that allows natural materials to stand out in all its glory. Lime-wash on the walls creates a light and soothing backdrop for the various shades, textures and intricacies of the flooring. The spaces are largely geometric that flow into one another. The exterior-spaces follow a similar design language to the interiors. A gym, a wooden jacuzzi deck, a verandah outside the formal



The living room area.



The study area



The outdoors





seating and a balcony outside the master bedroom, and sit-out neat the courtyard comprises of the exterior-spaces. Black Kadappa adorns the entrance and the gym. Grey Kota is used in the verandah and the master bedroom balcony. The sit-out near the courtyard is finished in brown Kota.

The architects achieved beautiful volumes since the 4-bedroom house was converted into a 3-bedroom one. The current study was a former passage with a terrace. The study is devised as a wooden box to imbibe warmth. The wood is a stark departure from the lime-finished walls in the rest of the house. A curvilinear ceiling, again finished in wood, gradually rises

outward creating a half-curved roof that brings in sunlight. Sunlight illuminates the wood to highlight its natural textures. Most of the wood that is used in the house is reclaimed wood. A discernible yet overlooked feature of the house is its understated demeanour that celebrates every element, material and finish to its fullest. The architecture and decor tastefully blend into one another yet each detail exhibits uniqueness and personality that captivates the user. The home blends multiple facets that define VS House as a coming together of spatial exuberance and stoic minimalism.



## FACT FILE

Client	:	Vaibhav Shah and Shivani Rajpurohit
Typology	:	Residence
Program	:	Family Home
Address	:	43, Gala Lotus, Gokuldham, Sanand Road.
Location	:	22.977694, 72.457429
Start date	:	12 Jun 2019
Finish date	:	6 Mar 2020
Status	:	Completed
Built-Up Area	:	5000 sq.ft
Site area	:	6700 sq.ft
Design Lead	:	Malay Doshi
Design Team	:	Kaveesha Shah, Dipti Kotak, Khyati Pankhania, Aashna Khetan, Punit Jain

## COLLABORATORS

Photography	:	The Fishy Project
Visualisation	:	Malay Doshi
Landscape	:	Rachana Creation
HVAC	:	Airstage Engineers
Electrical	:	Sudhir Sharma
Plumbing	:	Deepak
Lighting	:	Crystal Palace
Finishing	:	Karansinh

## BRANDS/ PRODUCTS

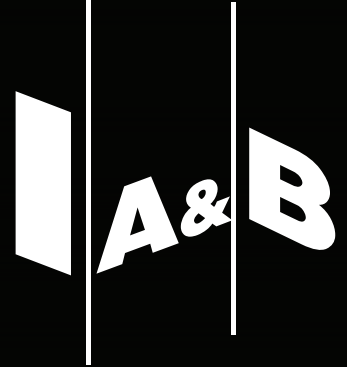
JC  
Jaquar  
The Brick Store  
Nordic Furniture  
Studio Smitamoksh  
Pepperfry  
Options  
Artemis Cast Stone

## SOFTWARE

Autodesk	:	AutoCAD
Trimble	:	Sketchup
Adobe	:	Creative Suite
Unreal Engine	:	Twinmotion



Connect, Engage & Collaborate with **>75,000**  
architects & interior designers  
with **IAB DIGITAL**



## **connect**

art, architecture, design  
professionals & students

## **reach**

more than  
75,000 inboxes

## **explore**

new avenues for reaching  
the target audience

## **engage**

brand awareness & expand  
customer portfolio

## **customize**

new avenues for  
business leads

