



A&B

URBANISM

The Vibrant Walkway, Aangan Architects

INTERIORS

La Lumiere, HD Design Studio

The Kabadiwalla Connect Workspace, Drawing Hands Studio

The Expand Loft, Quirk Studio





DOES HEAT BELOW YOUR ROOF CAUSE STRESS TO YOUR EMPLOYEES ?

INSTALL HINDALCO EVERLAST ALUMINIUM ROOFING SHEETS

Hindalco Everlast Roofing Sheets make complete business sense:

- Moderate temperature below the roof
- Do not rust, needing no maintenance
- Good resale value vis-à-vis other roofing materials
- A quality product from Hindalco - the world leader in aluminium rolled products



NETWORK HEI031 19

For more information, please call: 1800-103-9494. E-mail: hindalco.everlast@adityabirla.com | www.hindalcoeverlast.com

Shaw Contract introduces the In Sync collection

In Sync: When thoughtful design and practicality come together.

<https://youtu.be/1olhWqBbRcU>



Shaw Contract recently introduced the In Sync collection. The In Sync collection is designed for ease of installation and a positive impact on people and the planet. In Sync delivers the perfect blend of sophistication and functionality, pairing with Shaw Contract's 5 mm LVT for a smooth transition. Durability and value are embedded in this collection of carpet tiles with EcoWorx® backing.

This collection enables the creation of value-driven spaces that never compromise on design. The designer is guaranteed the kind of confidence that comes from choosing In Sync

The collection comprises three styles: Companion Tile 5T355, Partner Tile 5T357 and Correspond Tile 5T356. The plaid-like grid of Correspond is highlighted with flecks of colour that act as a subtle palette for paint and fabric inspiration. Companion and Partner shift in textural scale to allow for a smooth transition—a synchronization of style and design that serves the spaces where we work and learn. ■

For more details on the In Sync collection: <https://www.shawcontract.com/en-in>

Taiwan wows India with Green Building innovation

Visit the Wow Taiwan website today!



Lighting Systems



Video Link: https://youtu.be/64uW1HI_1tk

4

Water
Purification &
pumping



Video Link: <https://youtu.be/HV2ut80vvwM>

Taiwan is a technology powerhouse in the green building segment. Starting October 2020, 15 Taiwanese companies showcase their innovative products that not only helps customers save time, money and effort, but also contribute to betterment of the environment and quality of life on the planet.

NOVEMBER 2020



**Energy saving
materials &
solutions**



Video Link: https://youtu.be/OBX8rsG0_hY

Air Purification & Circulation



Video Link: <https://youtu.be/4YkjLHsL9No>

The innovative products are in the areas of (i) Air purification & circulation (ii) Water purification and pumping (iii) lighting systems and (iv) Energy saving materials and solutions.

For more information, visit our website- <https://rb.gy/gpmh2u>

Contact Information - Tony Lee, CDRI E: tonylee@cdri.org.tw

INDIAN ARCHITECT AND BUILDER

CHAIRMAN

Maulik Jasubhai Shah

PUBLISHER & CEO

Hemant K. Shetty

DEPUTY EDITOR

Sujatha Vishnuraj

SUB-EDITOR

Shriti Das

CREATIVES

Arun Parab

GENERAL MANAGER SALES

Amit Bhalerao

Prashant Koshti

BRAND MANAGER

Sudhanshu Nagar

SALES

Godfrey Lobo

Priyaranjan Singh

Chandahas M Amin

Yonack Pradeep

Sunil Kulkarni

Harshad Gaikwad

Indian Architect & Builder: (ISSN 0971-5509), RNI No 46976/87, is a monthly publication. Reproduction in any manner, in whole or part, in English or any other language is strictly prohibited. We welcome articles, but do not accept responsibility for contributions lost in the mail.

JASUBHAI MEDIA PVT. LTD.

Registered Office: 26, Maker Chambers VI, 2nd Floor, Nariman Point, Mumbai 400 021, INDIA. Tel.: 022-4037 3737

Fax: 022-2287 0502, E-mail: sales@jasubhai.com

PUBLISHED BY:



3 Industry News

URBANISM

14 The Vibrant Walkway: Celebrating the Spirit of Dumas

The Vibrant Walkway by Aangan Architects showcases a much-required approach in creating State-of-the-art public spaces and integrating art as an integral part of public space design.

INTERIORS

26 Recreating Paris in Mumbai

La Lumiere By HD Design Studio is a bespoke café and patisserie in Mumbai which is themed to the Parisian street cafe and designed to accommodate all its requirements and functions within 300 square feet.

34 Change: The Only Constant

Drawing Hands Studio creates a functional and flexible layout for the Chennai-based Kabadiwalla Connect with an open floor-plate, customised furniture and tables on casters.

44 A Matter of Work and Play

Work and play coexist at the Expand Loft, a bespoke office crafted by Quirk Studio navigates a fine balance between merriment and seriousness without letting either attribute overpower the other.

Cover: ©Drawing Hands Studio

Success of RM Crushers for C&D Waste



Proved successful: RM 70GO! 2.0 for GSL Groundwork Ltd gets compact crusher from Red Knight 6

Groundwork Solutions Limited have updated their operations with an RM 70GO! 2.0 for crushing construction and demolition concrete. After a successful trial period, they purchased the RUBBLE MASTER impact crusher because of its compactness and great performance.

Groundwork Solutions Limited (GSL), based in Canterbury, Kent have updated their operations with an RM 70GO! 2.0 for crushing construction and demolition concrete. They purchased the compact crusher from RM's appointed sales partner for southern UK, Red Knight 6, after a successful trial period. One of GSL's main solutions is volumetric ready-mixed concrete and screed. Their new RM 70GO! 2.0 is able to crush down to very small sizes, this gave GSL the ability to recycle their construction & demolition concrete for use in ancillary mixes. This results in

lowering their environmental footprint, as well as saving money on buying primary aggregate.

"When the machine first arrived, I was delighted at how compact it was. Then seeing it in action I knew it was what we were looking for. The speed at which it crushed the C&D to the -40mm product that we needed was fantastic, it delivered more tonnes per hour and was half the footprint of our previous crusher," said Wayne Cooper, director, GSL

Dan Flack, sales director for RK6 commented: "Working closely with Wayne and the team at GSL we've been able to identify the right solution for their business. Having conducted a trial on site, we were able to demonstrate exactly how powerful the product is and how it will benefit the GSL business."

The RM 70GO! 2.0 weighs just 19 tonnes and is highly flexible, being able to handle and process a wide range of materials, including rubble, asphalt and concrete.

Metatext:

The UK company Groundwork Solutions Limited decided for an RM 70GO! 2.0 because of its compactness and great performance.

Construction & Demolition (C&D) Waste Handling

Options:

- Option 1: Centralised C&D waste recycling
- Option 2 : On Site crushing
- Option 3: On site recycling. ■

*For further information please contact
SCHWING Stetter India Pvt. Ltd.
Email : chennai@schwingstetterindia.com
Landline : +91 (44) 71378100/1
Mobile : +91 99529 66700.*

Taiwan companies showcase Green Building innovation



8

Taiwan is a global powerhouse in the green building technology segment. Starting October 2020, 15 Taiwanese companies have showcased their innovative products at the Indian Green Building Congress (IGBC) exposition.

This is part of an initiative led by the Bureau of Foreign Trade of the Government of Taiwan and actively driven by the thinktank, Commerce Development Research Institute (CDRI) under the Wow! Taiwan project.

The innovative products are in the areas of (i) Air purification & circulation (ii) Water purification and pumping (iii) Lighting systems and (iv) Energy saving materials and solutions.

The products and solutions not only help customers save time, money and effort, but also contribute to improve the environment and quality of life on the planet.

The domestic air purifier by Chailease

Resources intends to clean the indoor air and improve air quality in offices and residential areas. This SGS Certified purifier enables PM2.5 and formaldehyde removal rate up to more than 99.9%. It has a washable strainer means no need for consumables, and it has an auto-modifying feature that adjusts the cleaning efficiency according to the air quality.

A customizable air purification solution introduced by Lelantus combines effectively with HVAC systems in business and educational spaces to effectively remove common indoor pollutants and makes spaces microbe-free. This solution employs the British Darwin ifD air purification technology of air purification using a strong electric field with dielectric materials as carriers. The dielectric material forms a honeycomb hollow microchannel, which exerts a huge attraction on the charged suspended particles moving in the air, and at the same time can collect



bacteria and microorganisms attached to the suspended particles and kill them in a strong electric field. No consumables and low resistance in addition to PM2.5 and antibacterial function, can be repeatedly cleaned and maintained, and can be linked with air conditioning.

The globe-leading high volume low speed (HVLS) fan introduced by AMATech Corp helps activate and accelerate air convection to improve humid and sultry environment in large public areas such as railway and metro stations, and also factories and warehouses. Its features includes a PMSM rare-earth strong magnetic synchronous motor and invention patented magnet holder that guarantees permanent life, and achieves energy saving and carbon reduction. This is the only waterproof design in the world that can adapt to various environments. It has a lightweight integrated design of aluminum

alloy and a patented one-piece embedded chassis design.

HiVawt Technology Corp has featured its innovative wind turbine solution for residential application. This product is the only certified vertical axis small wind turbine in the world and solves the usual issues related to wind turbines including poor performance and low wind self-start. This can be effectively combined with other renewable sources of electricity such as solar residential application, public projects and even remote areas. ■



For more information, visit www.wowtaiwan.org or click on <https://bit.ly/3hMDFlp>

Contact Information: Tony Lee, CDRI

Email: tonylee@cdri.org.tw

Häfele Countertop Appliances



The recreational experience of cooking your favourite delicacies is often spoiled due to all the time and effort spent in mundane pre-cooking activities. Häfele brings to you, an efficient range of smart countertop appliances that can collectively assume responsibility for all menial kitchen chores that precede the actual cooking experience like chopping, grating, blending, grinding and mixing, while you relax and watch it happen. Aably complementing our comprehensive range of cooking appliances, Häfele's smart preparation machines come in modern formats coupled with precise functions that will make your pre-cooking tasks a breeze.

Individual Product Snippets

- **Klara and Viola Kitchen Machines:** Häfele's Klara and Viola Kitchen Machines are in essence kitchen dynamos that successfully amalgamate functions of various countertop appliances like dough kneader, whisker, beater, chopper, grater, sausage maker, juicer, mixer and blender. This not only creates more space for you

on your worktop but in the long run helps derive compounded value for the money spent by you. Your daily kitchen chores are nothing but a piece of cake for these versatile, multi-use machines by Häfele.

- **Oktablend Vacuum Blender:** The Oktablend Vacuum Blender laden with VacuoTechnology helps remove, with the push of a button, the air and oxygen responsible for oxidation of food and the subsequent depletion of the micro nutrients to enhance the shelf life and nutrient content of the blended food. With this technology the nutrient level of your food is maintained and the food can be stored for a longer time when compared to traditional blending.
- **Melange Professional Blender:** Häfele's high speed Mélange Professional Blender is your perfect partner for power punched blending results. Thanks to its titanium coated blades which are tough and long-lasting and the strongest motor in the market, blending hard fruits and vegetables like coconuts, apples and apricots or grinding hard and dried Indian spices like dry turmeric, cumin, coriander seeds, and pepper corns takes no real





effort. The fully digital machine also comes with a unique one touch operation for Smoothies and Ice crushing. You can choose up to 30 speed levels for the perfect blending and grinding results.

- **Magnus Cold Pressed Juicer:** The Magnus Cold Pressed Juicer by Häfele is designed to work at a much slower pace as compared to your regular juicer. It is hence able to extract fruit and vegetable juices without applying heat, the absence of which helps retain maximum number of nutrients, vitamins and enzymes, and prevents oxidation. The Magnus ensures that it extracts more than 80% of the juice from fruits and vegetables put into the juicer.
- **Amber Electric Toaster Machine:** The 2-Slot Amber Electric Toaster Machine comes with 7 adjustable browning levels and enables you to not only prepare fresh crisp toasts but also to reheat the ones prepared previously. You can also defrost the freezer-stored bread in the toaster. The two-slot electric toaster machine is available in two contemporary colours – Jade (matt grey) and Opal (metallic red).



- **Dome and Queen Electric Kettles:** The Dome and Queen Electric Kettles by Häfele not only looks impressive on your kitchen countertops but are also extremely quick and efficient. Both the models come with a temperature display slot for you to ensure that the water boils at the precise temperature as per your liking. Together with having a high capacity to heat water, these kettles come with removable lime scale filters for easy cleaning. The Stainless-Steel body, inner water level markings, non-drip spout and sleek handle make the kettles extremely easy to use and durable. ■

SICC INDIA WELCOMES ITS NEW PRESIDENT ABUBAKER KOYA, MANAGING DIRECTOR, GEBERIT INDIA



At a virtual event on 25th September, 2020 – “Change in leadership – Handing over the Reins”, Mr. Abubaker Koya, Managing Director, Geberit India took over the reins as President of Swiss Indian Chamber of Commerce India. He takes over Dr. Shravan Subramanyam, who has relinquished his post after serving as president for over two years.

Mr. Koya has also been on the SICC - South

Executive Committee since 2014 and held the post of President SICC-South Chapter for two consecutive terms.

We congratulate and wish Mr. Koya the very best for this new assignment.” ■

Product Innovations 2021: SCHOCK Focuses on Sustainability and Premium Quality



In coining the term SINK GREEN, the innovative manufacturer of quartz composite sinks and supplier of high-grade mixer taps not only gives its longstanding drive for sustainability a name but at the same time makes plain its ambition to usher all of its processes and products into a sustainable future. This has resulted in a world first, the CRISTADUR® Green Line, a premium sink material consisting of over 99% natural, renewable or recycled raw materials, which redefines the concept of sustainability in the sink market. But SCHOCK would not be SCHOCK if there weren't also lots of new product innovations: sink models, mixer taps, accessories and new colours to emphasise the **COL OUR YOUR LIFE** claim.

The most sustainable material: CRISTADUR® Green Line

The CRISTADUR® Green Line is the most sustainable quartz composite sink ever made by SCHOCK. With natural quartz sand being the main constituent in the product, quartz composite sinks are already produced in harmony with nature and the environment. The CRISTADUR® Green Line is the sink for all those who want an even more sustainable product. The models in the CRISTADUR®

Green Line series consist of >99% natural, renewable or recycled raw materials. And that's not all: the sink can be returned to SCHOCK at the end of its life to go into the company's closed cycle, where it will be reused in the

production of new sinks without any loss of quality. This option is available in the German market initially.

The CRISTADUR® Green Line is naturally manufactured with all the premium quality features inherent in CRISTADUR® and is being launched in two different colours: Night and Day. Back in 2013, SCHOCK already unveiled its blackest black in the form of Puro - a true shade of jet black. Now the innovation leader is taking it one step further with the new colours Day and Night. Night embodies a truly intense graphite black, while Day offers the sharpest possible contrast: the whitest of pure whites that SCHOCK has ever made. ■

SCHOCK GmbH

Hofbauerstrasse 1, 94209 Regen, Germany

Phone +49 (0) 9921-600-0, fax +49 (0) 9921-600-253

Mail: info@schock.de Internet: www.schock.de

Facebook: www.facebook.com/SchockGermany

The Vibrant Walkway- Celebrating the Spirit of Dumas

Dumas, Surat, Gujarat

Dumas, an urban village, is an important landmark of Surat City, at the mouth of the River Tapi. Dumas holds a special place in the lifestyle of Surat since historic times. Touted as a relaxing destination with cottages and some amazing banyan trees, the coastal lifestyle of Dumas always attracted city dwellers for weekend to enjoy the beach, camel rides and the famous yam fritters. Dumas langar (anchor) is a war memorial commemorating the martyrdom of soldiers from the region in World War II; this important landmark marks the starting point of the project of 'Vibrant Walkway'.

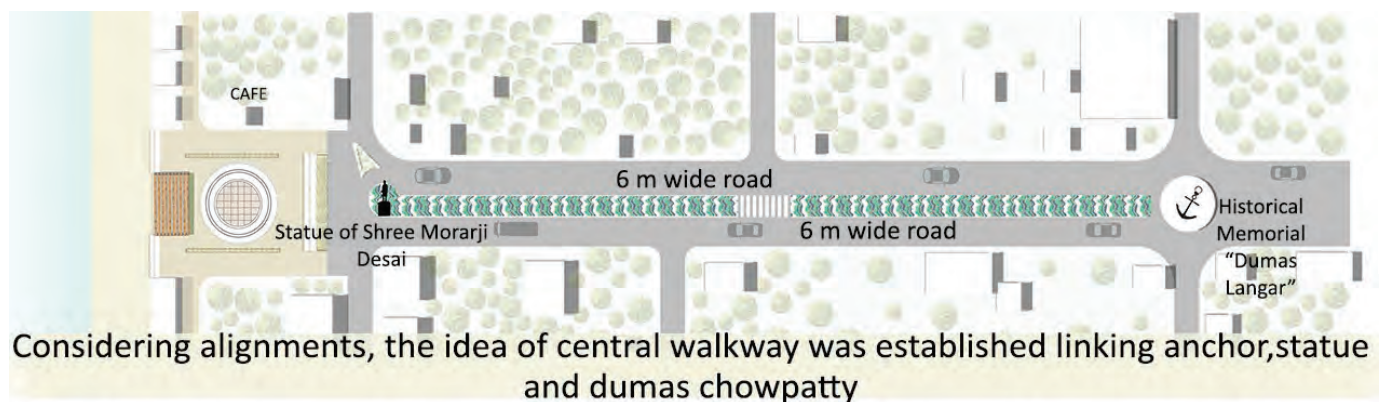
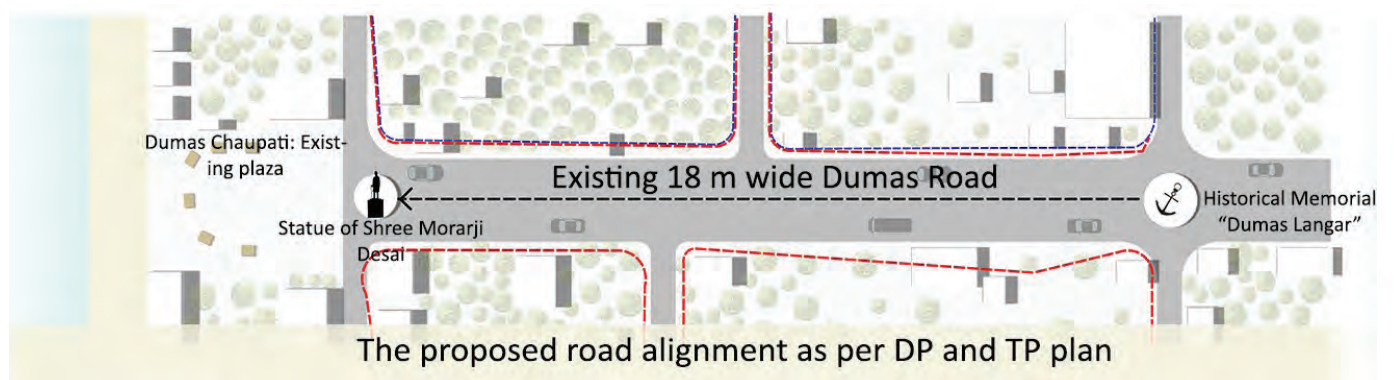
14

Text: Prakruti Desai

Images: Name of the photographer, as a part of Memoire Photo contest hosted by AARI and Urban Initiatives.

Drawings: Aangan Architects





PROJECT BACKGROUND

With the coastline distancing itself from the shores of Dumas, the place lost its purpose. THE VIBRANT WALKWAY brings back to life city's historic destination which is lined up with heritage structures, colonial outhouses and numerous eateries. Dumas, which forms the south-western dead end of Surat city is

revived and celebrated as a culmination point resonating the spirit of the place through interactive urban design. The area of intervention was a 500 metres long vehicular stretch anchored with two important historic landmarks: the Langar- a historic anchor memorial commemorating World War II soldiers and the Statue of the Ex-Prime minister of India, Shri Morarji Desai. The proposed

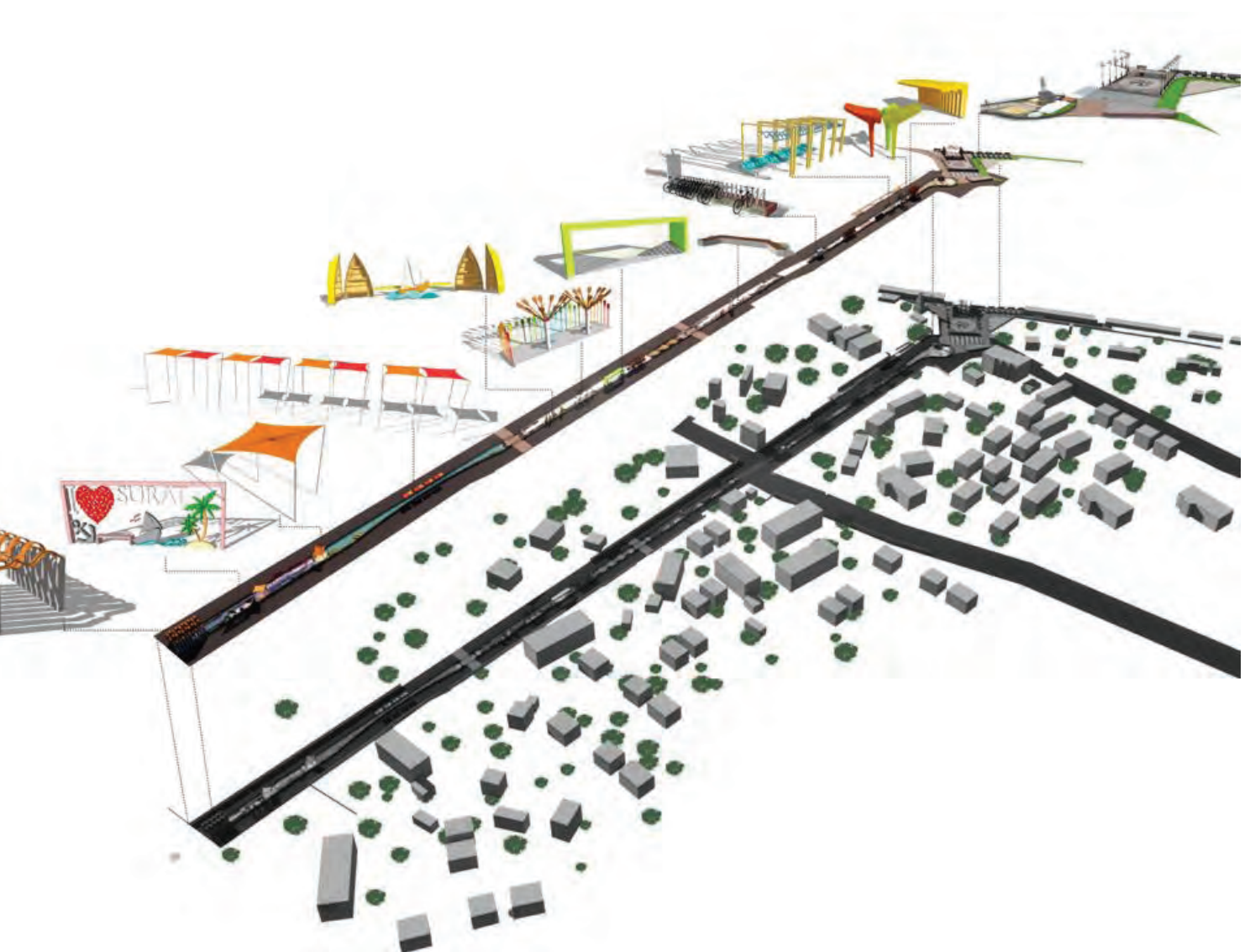


Illustration showcasing interactive installations

pedestrian walkway links these two anchor points gliding through the centre of the road with leisure, landscape and playful opportunities to rejuvenate and eventually culminate into the Plaza of Celebration.

Dumas is an important landmark of Surat city known for being an important port, beach, fishing and recreation destination. This project is a case where Urban Design

takes a leap in bringing forth memories of the place (The past) and celebrates the vitality and vibrancy of the city and its people (The present). The Dumas project was conceived as a street of celebrating the identity of long lost historic landmark by 'linking' The Dumas Langar¹ and the Dumas Chowpatty (The plaza) and acknowledging the significance of Shri Morarji Desai's statue.

Langar¹ - The anchor memorial in Surat city, locally known as Dumas Langar.



Aerial view of the walkway. © Parth Patel.

Surat is a city where 'streets' have been always vital as public space - One would observe a sea of people sitting on the footpaths on road sides, where people are socialising and enjoying picnic of sorts. Be it festivities or food, Suraties celebrate their activities on streets and chowks. All these daily and seasonal activities play a key role in enhancing the quality of public interaction and social lives, which is distinct to the city of Surat. The Vibrant Walkway implicates how the people and communities influence the infrastructure in a public domain, so that the urban design

becomes representative images of not only the city but also the people that occupy it.

PLANNING AND CONCEPTUALISATION

Since Dumas has been a weekend getaway destination, the project called for proposing activities and involvement from locals in order to revive its recreational importance. The central walkway is a design decision driven by the proposed alignments of Town Planning scheme and The City Development Plan where the roads are to be widened on both sides. It



Gate-Wave - Entry to walkway. © Priyank Shah

was thus, that the idea of central walkway came into being.

This Central walkway- also acclaimed as the vibrant walkway by the city, is a journey towards the destination. It was conceptualised to depict vivid characteristics of the place-Dumas and the people of Surat. The street offers leisure, recreation, play and sport through a series of metaphoric urban installations which are of participatory nature. Vibrant as the 'Suraties' are, the street celebrates this vibrancy through colourful urban design.



Installation: THE OCEAN ABOVE © Manan Surti

The project has brought on the surface the 'Image of the city' and reinstate in people the sense of association and belonging to the place using 'City Branding' as a tool.

THEMATIC INSTALLATIONS

Interactive urban installations popping along the walkway allows people to reminisce into elements of the past such as- boats, oars, hammocks, beach waves and ghats which belongs to the memory of Dumas as an important destination. Dynamic forms, playful colours, interactive nature and relativity has brought life to



© Parth Gabani

public recreation at Dumas. People sit, play, take selfies and interact all along the series of thematic installation inserts. Installations are termed as follows:

1. GATE WAVE – In the memory of lost shores, the “gate wave” erected of dynamic metallic waves forms the entry to the vibrant walkway.

2. I LOVESURAT- It is our optimistic take on using city branding as a tool to boast up the belongingness between city and citizens. This installation is a photo opt for people to be in a ‘frame’ with the city and elements.

3 BOATS FROM THE MEMORIES – Dumas port have had a special place for

boats and sails. This installation is inspired from these memories giving the Surtis an opportunity to be with the nostalgic past.

4 COL-OARS- Col-oars is a colourfully celebrative installation of colourful oars to meander around. The bright and dynamic colours energize the spirits.

5 GHATS – Ever thought of a ghat in the middle of the road? Well, this installation is reminiscence to ‘Ghats of Surat’- known as ‘ovaras’. The lengthy space serves as an enclosed seating space for a solo soul or groups.

6 THE FOLDED-UNFOLDED- With the idea of designing in motion, this installation was designed with intent to



Urban Fusion. © Raj Thakkar

offer kids to hang in there a while as they explore the street. **7 THE SWINGING NET** – inspired from fishing nets and hammocks this playful installation offers a place to rest, observe children playing and activities, passive contacts.

8 SLIDE OUT- gone are the days when only kids used to slide. This installation uses people of all age 'get in and slide out.' The installation is a success as you witness adults aligning to get over it.

9 BEACH SIDE BOULEVARD – the installation is an abstract interpretation of the cool breeze waves forming from Arabian Sea, evoking a sense of whimsical travel through space.



Jump for Joy: Depictions by Prachi Khasgiwal



Installation – Beachside boulevard



Installation- The Tri-O-Life



Places for play and pause.



Installation- Boats from memories. © Prashant Vaghasiya.



Surat city, formerly known as Suryapur. © Depictions by Prachi Khasgiwala

10 TRI-O-LIFE- tri-o-life metaphorically represents the life of Surat based on three important aspects: Growth, strength and sustainability, standing tall and strong. The colours represent the cultural vibrancy of Suraties.

11 THE OCEAN ABOVE -The installation draws its inspiration from the waves, forming a boulevard leading to the statue of the Great Morarji Ranchhodji Desai as one approaches towards it.

12 I LOVE DUMAS - from "I love Surat", to "I love Dumas", this stretch is a journey of a person who loves Surat and eventually falls in love with Dumas on moving closer towards the sea side, witnessing the various installations suiting the context. The plaza area come as a finale



Installation- Col-Oars (Colourful Oars).



24

The urban design of the vibrant walkway had conscious and thoughtful decisions and interventions to mitigate contextual challenges like vandalism, structural safety and future planning prospects.

Plaza of celebration – Culmination

to all the installations. A place meant for celebration, interaction and relaxation. A place where people of all age group enjoy seeing the water and getting the physical participation with it. Place branding plays its part and adds more confidence to the people of the place (Local).

PROJECT COMPONENTS

The project is a wholesome gateway from the busy city life and sojourning recreation with following major components playing their part:

1. Seating spaces (Benches)
2. Interactive installations
3. Indigenous plantations
4. Wave floor along pathway

5. Cycling booth
6. Café
7. City's first interactive fountain
8. Public plaza for concerts
9. Revived historical landmark, Morarji Desai
10. Amphitheatre

Conclusion

The 'soul' of the project is reviving the lost place, lost image and lost association between people and Dumas. The urban design of the vibrant walkway had conscious and thoughtful decisions and interventions to mitigate contextual challenges like vandalism, structural safety and future planning prospects. With the



on point of the journey. © Unnati Mistry

vibrant looking scaled up interventions in the middle of the private road, had its own challenges which were a threat to address for the design and execution team. The joy of giving back to the city, its long lost destination and witnessing the citizens cherishing it in right spirit is the reason, the project stays special. The project showcases a much needed approach in creating State-of-the-art public spaces and integrating art as an integral part of public space design. ■

FACT FILE

Location	: Dumas, Surat, Gujarat, India
Client	: Surat Municipal Corporation
Lead Consultant	: Urban Initiatives
Architecture and Urban Design consultant	: Aangan Architects
Design Team	: Prof.(Ar.) Vishal Shah, Ar. Prakruti Desai
Structural Consultant	: S & V Engineers
MEPF Consultant	: Shreeji Consultancy
Project Length	: 500.0 Metres
Project Cost	: INR 4.0 Cr.
Project Status	: Completed in February, 2020

Recreating Paris in Mumbai

La Lumiere, Mumbai

The French style is possibly the most coveted and reinvented across genres but there lies a subtle difference between replicating and recreating. La Lumiere By HD Design Studio is a bespoke café and patisserie in Mumbai which is themed to the Parisian street cafe and designed to accommodate all its requirements and functions within 300 square feet. The Parisian vibe is recreated efficiently through art, accessories, details and spatial interventions that the café mandates alongside offering a facelift to the street where it stands.

26

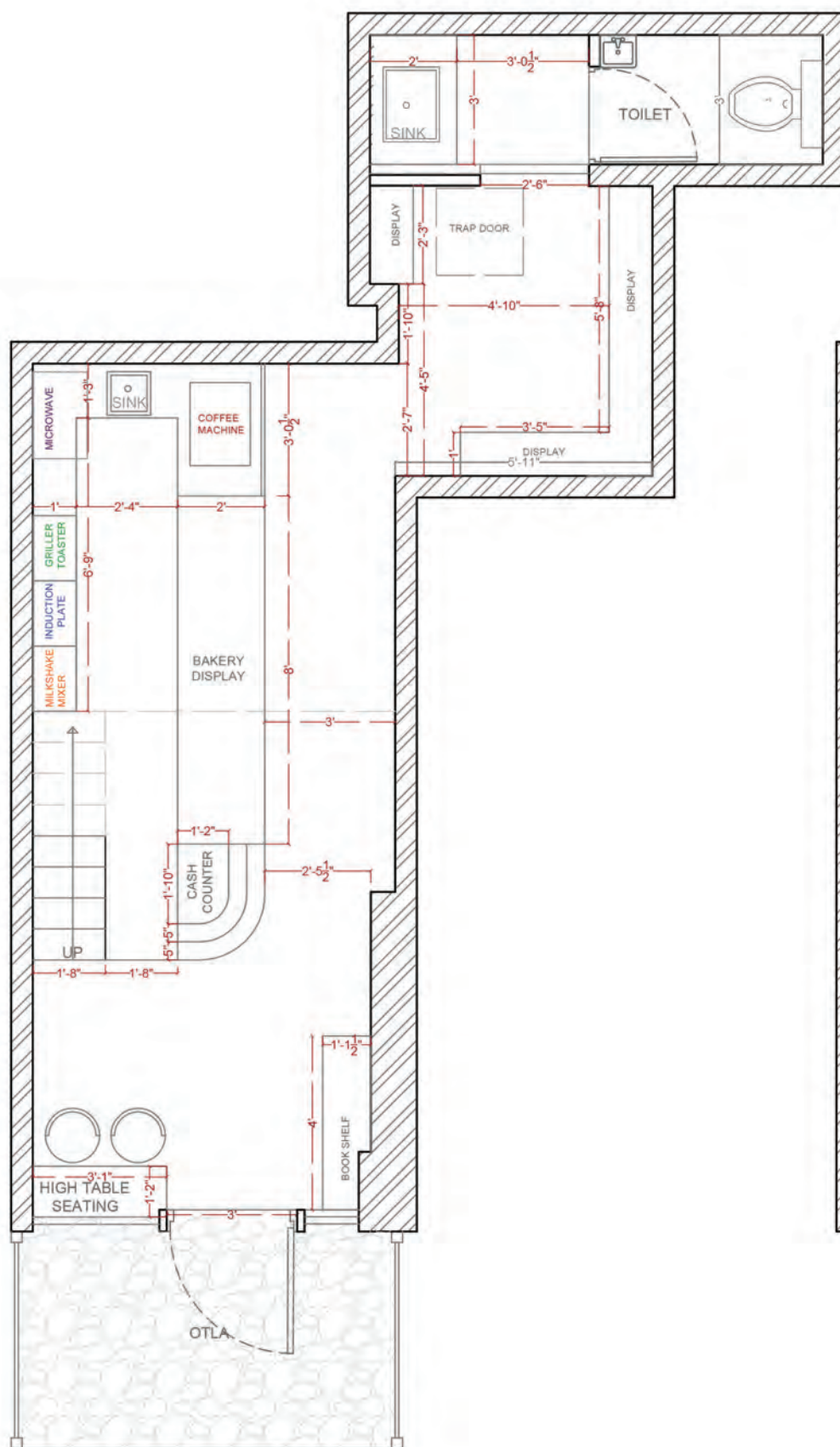
La Lumiere is a picturesque café in Mumbai that overlooks a busy street and a line of shops. The café-cum-patisserie is themed to chic Parisian street cafes with a focus on vintage elements. It is located within a mixed-use commercial block atop which a residential building stands. While this offered little scope for interventions on the façade, the frontage highlights the Parisian vibe with flair. Yet it was imperative that the frontage holds strong brand recall, offers a glimpse into the space within and illustrates the nature of the commercial undertaking; which in this case; was café. The architects at HD Design Studio were faced with

another challenge of fitting the mandated services, utilities and design in a tight floor-plate of 300 sq. ft. Yet, the café successfully houses a small open kitchen, display-shelf, a mezzanine dining area and outdoor seating.

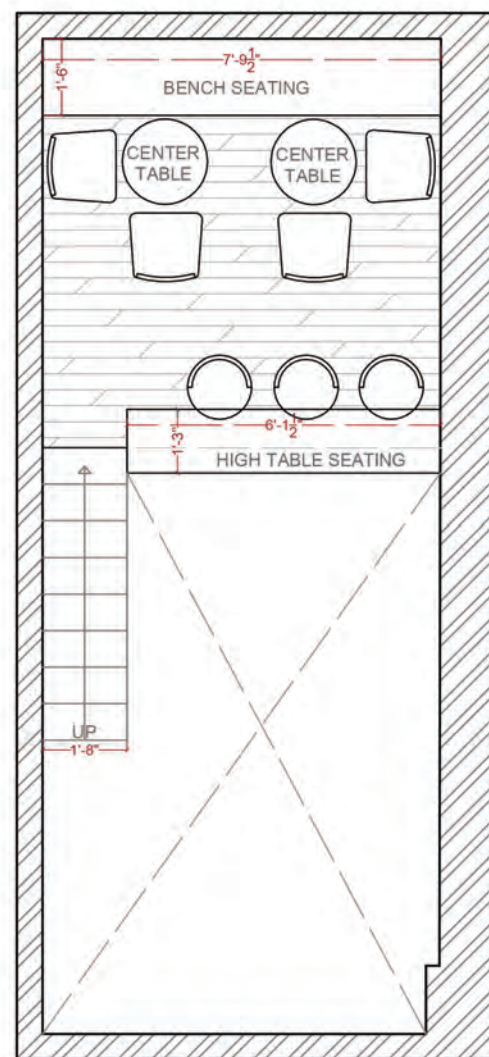
The outdoor seating is made in natural wood that is upholstered in dark textiles. The burgundy is borrowed from the brand's colour to create recall value. Dotted with planters and streetlamps. La Lumiere's external seating area creates a beautiful atmosphere for informal revelries and engagements. It gives the street a face-lift, demonstrating the power of design to uplift everyday spaces.



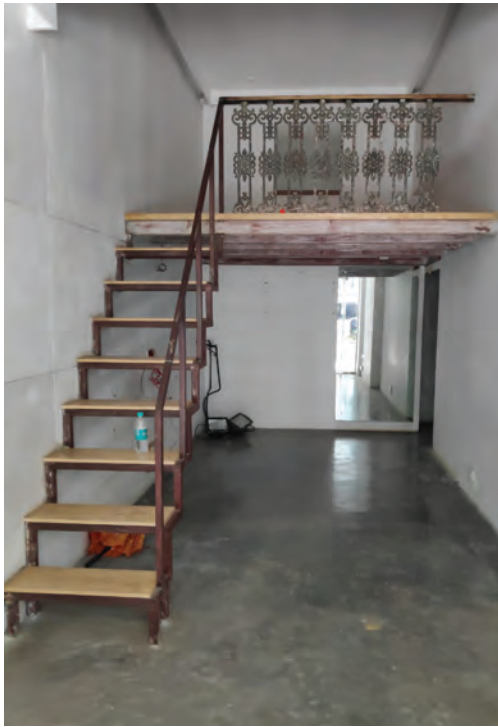
La Lumiere By HD Design Studio is a bespoke café and patisserie in Mumbai.



GROUND FLOOR PLAN



MEZZANINE PLAN



Before.



After.



Furthering the vintage vibe are the exposed brick walls and distress-printed floor-tiles. Distressed flooring blends perfectly with the décor resplendent in white.



The café successfully houses a small open kitchen, display-shelf, a mezzanine dining area and outdoor seating within 300 Sq. Ft.



The frontage with signages and subtle



ornamentation highlights the Parisian vibe with flair.

While mindful space management allowed the architects to effectively accommodate functions like a serving counter, seating, displays and storage, the décor is visually unobstructive and laidback. This is achieved with the use of a mirror-cladded wall and a largely white colour scheme. The mirror creates an illusion of continuous space and opens up the area visually. Faux creepers nestle in nooks to bring in a pop of green and freshness.

White is used extensively which allows for intricate details to transpire in the interiors. It lets the architects play with textures, motifs and patterns while exercising control over the space, eventually creating an oasis of calm and solitude. Bringing in the Parisian vibe to Mumbai are its interiors with elements like a chalk-board that displays the daily specials and menu. With irregularly finished edges, the chalkboard creates a vintage aesthetic. Art on the walls is pixelated to resemble printed posters from olden days. Furthering the vintage vibe are the exposed brick walls and distress-printed floor-tiles. Distressed flooring blends perfectly with the décor resplendent in white. The Parisian details however are not limited to the details but even extend onto signages at the entrance and towards the restrooms.



With irregularly finished edges, the chalkboard creates a vintage aesthetic.



Distressed flooring.



While La Lumiere stands in Mumbai, its bespoke details are all things Parisian.



Mezzanine Seating.

A library with culinary books and certificates underlines Le Lumiere's charming presence in the bustling city of Mumbai.

While La Lumiere stands in Mumbai, its bespoke details are all things Parisian. The French are known for their food, fashion and décor across generations and geographies. They are masters of panache, celebrations and glamour that is perhaps unrivalled. One associates the French with charm, romance, beauty, chicness, intricate details and all things beautiful and La Lumiere exemplifies each entity with finesse and novelty. ■



Maximised use of space.

FACT FILE

Project	: La Lumiere
Type	: Hospitality/Cafe
Year of Completion	: 2020
Client	: Vikram Bajaj
Location	: Bandra West, Mumbai
Principal Architect	: Harshita Desai & Deep Pandav
Organisation	: Hd Design Studio
Photography	: Bizou Photos
Budget	: 4500/Sqft

Change: The Only Constant

The Kabadiwalla Connect Workspace, Chennai

Drawing Hands Studio creates a functional and flexible layout for the Chennai-based Kabadiwalla Connect. With an open floor-plate, customised furniture and tables on casters, the space can be altered as required by the office at any given point of time.

Text: Shriti Das

Images: Phosart Studio

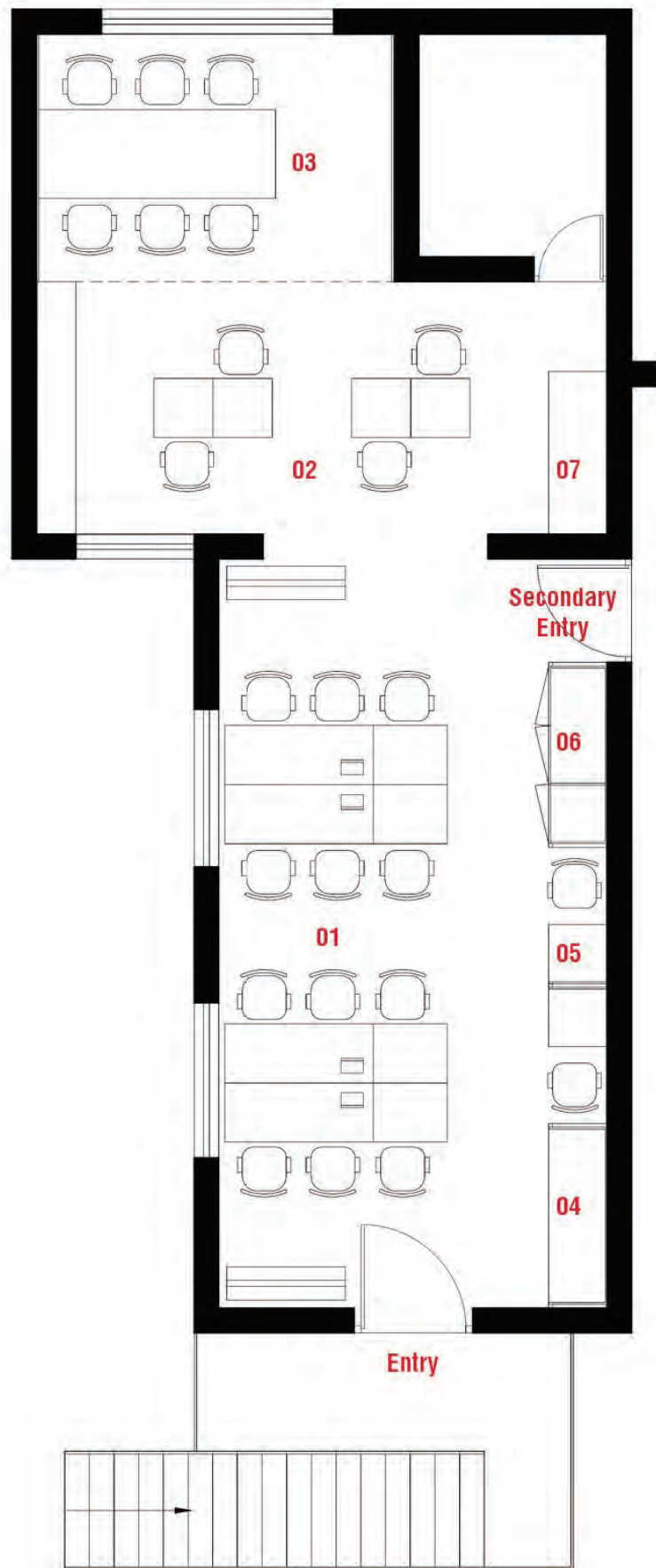
Drawings: Drawing Hands Studio

34

Video link: https://youtu.be/7Dzl9kee_0k

The Kabadiwalla Connect Workspace, Chennai by Drawing Hands Studio

- 1. Workspace
- 2. Informal Workspace
- 3. Conference Room
- 4. Lounge
- 5. Work Booth
- 6. Storage
- 7. Pantry



0 1 2 3
All units in feet & inches

N



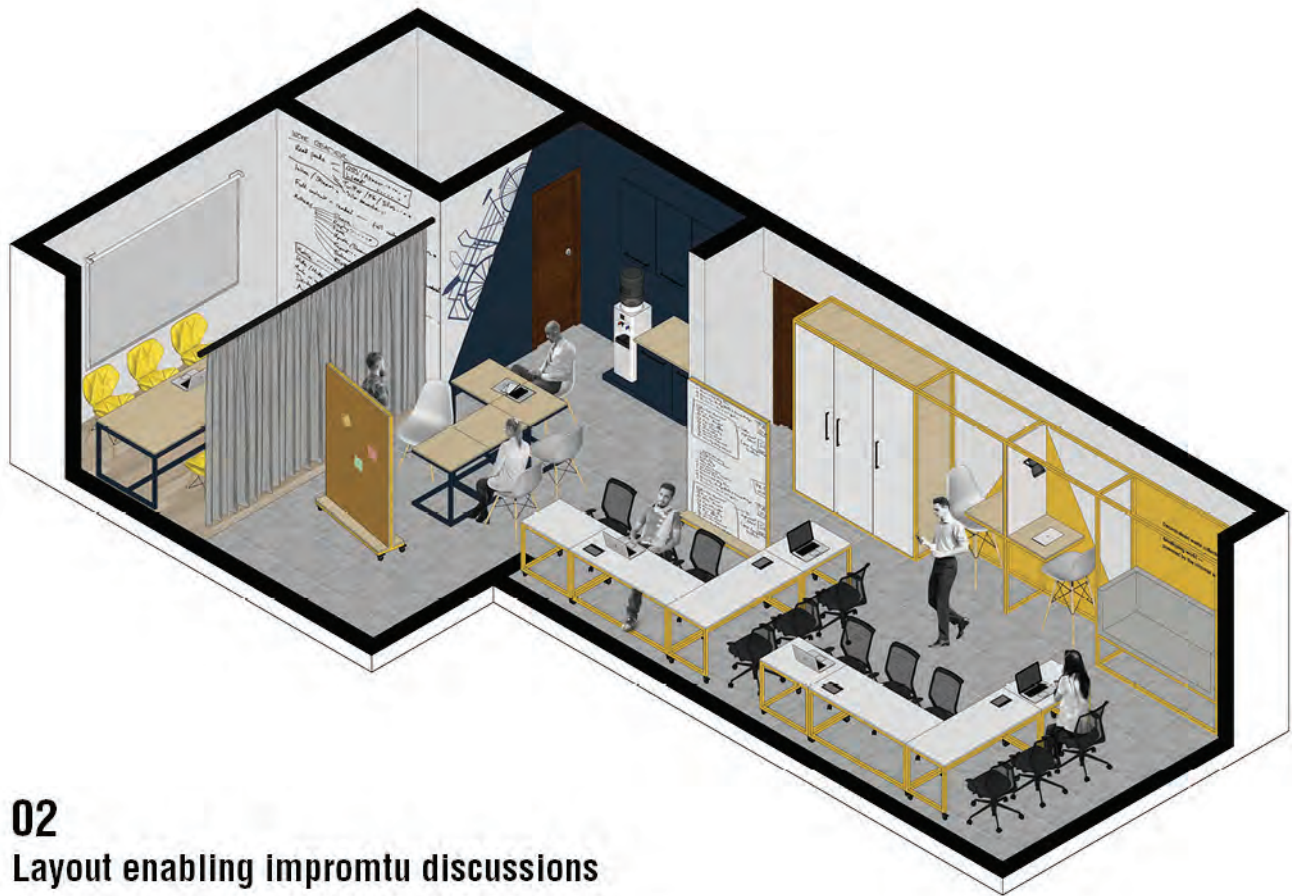
01 Typical working style

36

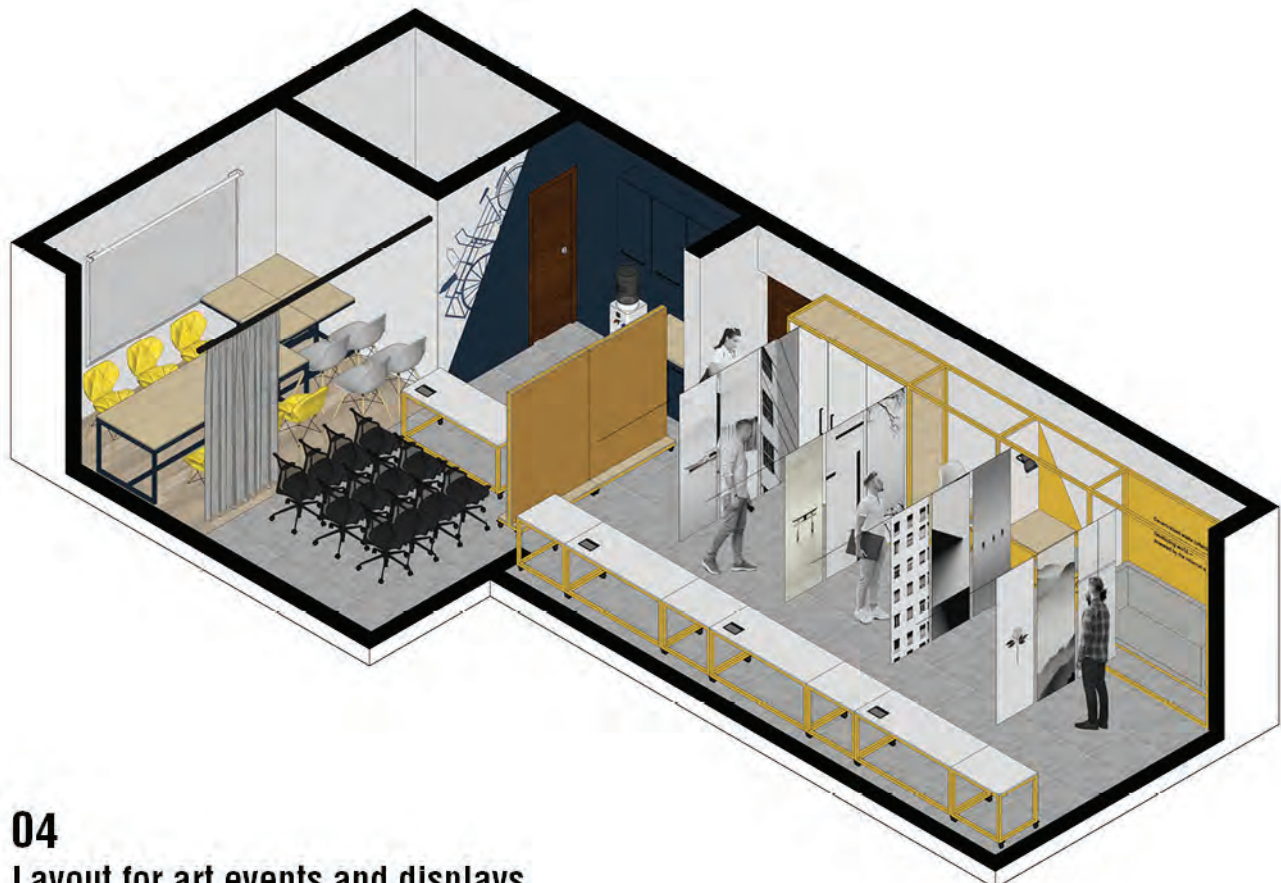


03 Conference style working

NOVEMBER 2020



02
Layout enabling impromptu discussions



04
Layout for art events and displays

Kabadiwalla Connect is a young waste-management company based in Chennai. Waste-management is a pertinent issue in not only metro cities but also within upcoming cities that are following modules of development as seen in urban areas. Villages too, are urbanising and waste-management will be key to ensuring that these regions develop in a sustainable, efficient and sound manner so as to not bring further damage to ecosystems. As real-estate development will be followed by industrial settlements, factories and manufacturing units, it is important that solutions are retrofitted to suit changing times instead of aspiring for a utopian world. Kabadiwalla Connect offers decentralised waste management solutions and technology for cities in the developing world — powered by the informal sector.

For a 600 square-feet workplace to be designed for the company, it was imperative that the space that they accommodate also adapts to their working patterns. Kabadiwalla Connect, given the nature of their work, had to house diverse programs in the space that they occupy. The office would be a workplace, a hub for art and even a stage for performing events. Drawing Hands Studio responded to the brief by devising a functional and flexible system



Kabadiwalla Connect, given the nature of their work, had to house diverse programs



Drawing Hands Studio devised a functional and flexible system of work within an open furniture and tables on casters that can be altered as required.



in the space that they occupy.



The office would be a workplace, a hub for art and even a stage for performing events.



en floor-plate with customised



The office for Kabadiwalla Connect exemplifies the new-age office that is defying the brackets of traditional offices or workplaces that are bound by desks and fixed spaces.



40

"Flexible workspaces are the future of offices, promoting productivity and happiness by encouraging the organic exchange of ideas between employees."



The mobile and fluctuating layouts work beautifully for offices as the variation allows the user to inhabit a new space at regular intervals keeping monotony at bay.



The mobile and fluctuating layouts work beautifully for offices as the variation allows the user to inhabit a new space at regular intervals keeping monotony at bay.



Custom-designed illustrations pertaining to the theme of the company

of work within an open floor-plate with customised furniture and tables on casters that can be altered as required by the office at any given point of time.

The colour palette is a bright and cheery yellow peppered with indigo blue for depth and grounding. While yellow is vibrant and peppy, the indigo imparts a visual stability to the overall space which may aid in improving concentration and focus. This, coupled with writable surfaces, mobile discussion units and work tables with plug-and-play options, pin-up surfaces and so on enable the users to modify the space to their requirements. The resultant space allows social activities, collaborative work, team discussions and even private secluded desks if required. The mobile and fluctuating layouts work beautifully for offices as the variation allows the user to inhabit a new space at regular intervals keeping monotony at bay.

The office for Kabadiwalla Connect exemplifies the new-age office that is defying the brackets of traditional offices or workplaces that are bound by desks and fixed spaces. It steers clear of hierarchies, rigidity and even social politics allowing the users to create and carve their spaces as they wish. This perhaps also allows them to be more

enthusiastic about work, translating into creative ways of problem-solving and aids overall productivity. As the architects at Drawing Hands Studio would put it, "Flexible workspaces are the future of offices, promoting productivity and happiness by encouraging the organic exchange of ideas between employees."■

FACT FILE

Project	: Kabadiwalla Connect
Design Firm	: Drawing Hands Studio
Area	: 600 SFT.
Typology	: Interiors, Workspace
Year	: 2019
Design Team	: Shruti Omprakash, Dinesh Kumar
Location	: Chennai, India
Photography	: Phosart Studio

A Matter of Work and Play

The Expand Loft, Mumbai

Work and play coexist at the Expand Loft, a bespoke office crafted by Quirk Studio. The studio navigates a fine balance between merriment and seriousness without letting either attribute overpower the décor devised for the event management company.

Text: Shriti Das

Images: Pulkit Sehgal





The Expand Loft by Quirk Studio is a fun and vibrant office for its employees that focuses on interaction and collaboration.



Quirk Studio adopted an industrial aesthetic with a neutral colour palette.

The 2,400 square feet office is crafted to accommodate a lo

Designed for an event management company, The Expand Loft is a fun and vibrant office for its employees that focuses on interaction and collaboration. For the space, the designers at Quirk Studio adopted an industrial aesthetic with

a neutral colour palette. It strikes a balance between fun and informality combined with the requirements that an office space mandates. The 2,400 square feet office exemplifies work, play and productivity fit into a sweeping space that offers




fty 14 feet high ceiling encompassing huge volumes.



The Expand Loft strikes a balance between fun and informality combined with the requirements that an office space mandates.

sweeping views of the city. It is crafted to accommodate a lofty 14 feet high ceiling encompassing a huge volume that complements the views that its massive floor-to-ceiling windows overlook.

The flow and circulation within offices is crucial because that can make or mar an office space. The Expand Loft is designed to facilitate natural flow of movement, thus ensuring that the space functions

A modern office interior with a green armchair, a red ottoman, and a geometric rug. The space features a long wooden desk with several white office chairs. A large window in the background provides natural light. The ceiling has exposed ductwork and track lighting. A yellow wall with an arched opening is visible on the right. A red fire hose is visible on the ceiling.

The Expand Loft is designed to facilitate natural flow of movement, thus ensuring that the space functions and communicates optimally.



The cafeteria with a community table and high-chairs is also intended to facilitate brainstorming sessions. Yellow makes an appearance on the wall and ceiling as an extension of the brand's colour.

and communicates optimally. The office largely wears an industrial vibe that are punctuated with colour and accessories to bring out a sense of panache and poise in the workplace. Hints of yellow from the company logo are prevalent throughout the space for brand recall. Green and red are used in a controlled fashion to accentuate the interiors. Pendant lights on the ceiling further this aesthetic and



Expand Loft intersperses with art, ideas and ingenuity. It accounts for productivity, creativity, action and similar notions that allow a workplace to be successful yet does not take away from the fun and vigour of a dynamic office that do events.

patterned tile on the floor underline the industrial-chic theme of the office. The patterned tiles are used to demarcate the open pantry and cafeteria. Cement-finish vitrified tiles are used in the other areas.

The office is designed for easy maintenance but with artistic flair is a fair indicator of Quirk Studio's expertise. All lighting fixtures are in metal with black



Expand Loft intersperses with art, ideas and ingenuity. It accounts for productivity, creativity, action and similar notions that allow a workplace to be successful yet does not take away from the fun and vigour of a dynamic office that do events.



A sculptural lighting above the table accommodates black-and-white photography in a lively environment.



The conference table doubles as a statement piece. Most cabins feature artwork and foliage-filled planters in corners add to the

powder-coating. A sculptural lighting above the conference table doubles as a statement piece. Most cabins accommodate black-and-white artwork and foliage-filled planters in corners add to the lively environment that the office endeavours towards. But the art interventions are not limited to visuals and adornments. The reception area, for example, features decorative lights is also an installation that imparts personality to the space. A small seating area under a yellow arch becomes the focal point. A swing is designed and integrated into the reception area for fun and vibrancy. Amidst the colourful and quirky revelries, the reception desk is finished in Indian Patented Stone (IPS) that wears brings in an earthy and grounded temperament to the merriment. Another example of such equilibrium is the lightbox installation on the wall with an artwork of the text 'Feed Your Dreams' written across it. In the words of the designers, "It is a play on what the space is utilized for, while it also enables a positive affirmation of the quote."

The open pantry allows for informal seating and its spaciousness extends into the open cafeteria. The cafeteria with a community table and high-chairs is also intended to facilitate brainstorming sessions. Yellow, yet again makes an appearance on the wall and ceiling as

One appreciates art and artistry but remains focussed at the work at hand as work becomes play and play becomes imperative to work!

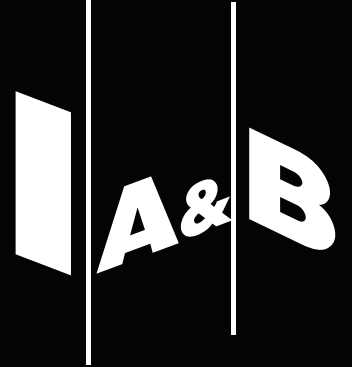
NOVEMBER 2020

an extension of the brand's colour. The office beautifully meanders and navigates these realms of work and play. As Interior Designers Disha Bhavsar and Shivani Ajmera who founded Quirk Studio in 2013 mention that their work exemplifies the notion of bespoke concepts – each unique in their expression, yet uniformly vibrant and welcoming. With a focus on the tactility of materials and subtle shifts of mood through strategic décor planning, Quirk Studio has fabricated style and sensibility in all of their projects. This idea comes across strongly with The Expand Loft with its neutrally dispositioned décor interspersed with art, ideas and ingenuity. It accounts for productivity, creativity, action and similar notions that allow a workplace to be successful yet does not take away from the fun and vigour of a dynamic office that do events. This sense of restraint and control is almost poetic wherein the senses are led to go astray to admire the details to an extent, but without distraction. One appreciates art and artistry but remains focussed at the work at hand as work becomes play and play becomes imperative to work! ■

FACT FILE

Typology	: Interior Design – Commercial
Name of Project	: The Expand Loft
Location	: Mumbai
Design Firm	: Quirk Studio
Design Team	: Shivani Ajmera & Disha Bhavsar
Site Area	: 2400 sq.ft
Completion Date	: March 2020
Photographer	: Pulkit Sehgal
Sanitaryware / Fittings	: Jaquar Sanitaryware
Flooring	: Kajaria Tiles
Furnishing	: Foam Palace
Rugs	: Ikea
Furniture	: Zodiac Chairs – Brand name
Lighting	: Kompton Lighting Company
Paint	: JV Interiors
Art / Artefacts	: Amar Signs
Hardware	: As provided by the builder
Electrical Consultant	: JV Interiors
Landscape Consultant	: Vriksha and Plant people

Connect, Engage & Collaborate with **>75,000**
architects & interior designers
with **IAB DIGITAL**



connect

art, architecture, design
professionals & students

reach

more than
75,000 inboxes

explore

new avenues for reaching
the target audience

engage

brand awareness & expand
customer portfolio

customize

new avenues for
business leads

